



A **CST Family** production

chicago  
shakespeare theater  
on navy pier

# About CST

Chicago Shakespeare Theater (CST) is a leading international theater company, known for vibrant productions that reflect Shakespeare's genius for intricate storytelling, musicality of language and depth of feeling for the human condition.

Recipient of the Regional Theatre Tony Award, Chicago Shakespeare's work has been recognized internationally with three of London's prestigious Laurence Olivier Awards, and by the Chicago theater community with seventy Joseph Jefferson Awards for Artistic Excellence. Under the leadership of Artistic Director Barbara Gaines and Executive Director Criss Henderson, CST is dedicated to producing extraordinary productions of classics, new works and family fare; to unlocking Shakespeare's work for educators and students; and to serving as Chicago's cultural ambassador through its World's Stage Series.

At its permanent, state-of-the-art facility on Navy Pier, CST houses two intimate theater spaces: the 500-seat Jentes Family Courtyard Theater and the 200-seat Carl and Marilyn Thoma Theater Upstairs at Chicago Shakespeare. Through a year-round season encompassing more than 600 performances, CST leads the community as the largest employer of Chicago actors and attracts 200,000 audience members annually—including 40,000 students and teachers through its comprehensive education programs. ■

## BOARD OF DIRECTORS

Sheli Z. Rosenberg  
*Chair*

Eric Q. Strickland  
*Treasurer*

Frank D. Ballantine  
Brit J. Barter  
Thomas L. Brown  
Allan E. Bulley III  
Patrick R. Daley  
Brian W. Duwe  
Philip L. Engel  
Jeanne B. Ettelson  
Harve A. Ferrill  
Sonja H. Fischer  
Richard J. Franke  
Barbara Gaines  
C. Gary Gerst  
M. Hill Hammock  
Kathryn J. Hayley  
Criss Henderson

William L. Hood, Jr.  
Stewart S. Hudnut  
William R. Jentes  
Jack L. Karp  
John P. Keller  
Richard A. Kent  
Barbara Malott Kizziah  
Edward A. Langan  
Chase Collins Levey  
Anna Livingston  
Renetta E. McCann  
Raymond F. McCaskey  
Robert G. McLennan  
Dennis Olis  
Mark S. Ouweleen  
Carleton D. Pearl  
Sheila A. Penrose  
Judith Pierpont  
Paulita A. Pike  
Stephanie Pope  
Richard W. Porter

Steven Quasny  
John Rau  
Nazneen Razi  
Glenn R. Richter  
Mark E. Rose  
John W. Rowe  
Robert Ryan  
Carole B. Segal  
Brittany A. Smith  
Steven J. Solomon  
Kathleen Kelly Spear  
Harvey J. Struthers, Jr.  
Eileen Sweeney  
Sheila G. Talton  
Marilynn J. Thoma  
Gayle R. Tilles  
William J. Tomazin  
Donna Van Eekeren  
Priscilla A. (Pam) Walter  
Ava D. Youngblood

presents

A **CST Family** production

# Shrek The Musical

based on the Dreamworks Animation Motion Picture and the book by William Steig

book and lyrics by  
**DAVID LINDSAY-ABAIRE**

music by  
**JEANINE TESORI**

originally produced on Broadway by  
DreamWorks Theatricals and Neal Street Productions

July 13–September 1, 2013

Scenic Design  
**SCOTT DAVIS**

Costume Design  
**THERESA HAM**

Lighting Design  
**JESSE KLUG**

Projection Design  
**MIKE TUTAJ**

Sound Design  
**GARTH HELM**

Wig and Make-up Design  
**MELISSA VEAL**

Special Effects Design  
**JAMES SAVAGE**

Casting  
**BOB MASON**

Orchestral Reduction  
**RYAN T. NELSON**

Production Stage Manager  
**DEBORAH ACKER**

Music Direction **MICHAEL MAHLER**

Directed and Choreographed by  
**RACHEL ROCKWELL**

Original Broadway production directed by **JASON MOORE**

Production Sponsor



**Allstate**

CHICAGO'S OWN  
**GOOD HANDS**

American Airlines is the official airline of Chicago Shakespeare Theater.

ComEd is the official lighting design sponsor of Chicago Shakespeare Theater.

*Shrek The Musical* Theatre for Young Audiences version premiered at The Coterie, Kansas City, MO;  
Jeff Church Producing Artistic Director, Anthony Edwards Music Director.

*Shrek The Musical* TYA is presented through special arrangement with Music Theatre International (MTI). All authorized performance materials are also supplied by MTI. 421 West 54th Street, New York, NY 10019. Phone: 212-541-4684. Fax: 212-397-4684. [www.MTIShows.com](http://www.MTIShows.com)

The performance is approximately 75 minutes with no intermission.

# SALUTE TO SPONSORS

Chicago Shakespeare Theater is proud to recognize the partnership of our leading contributors, whose visionary support ensures that Shakespeare lives in Chicago today and for generations to come.

## MAJOR SEASON SUPPORTERS



## LEAD SPONSORS

Allscripts	Harve A. Ferrill	Motorola Mobility Foundation	MartiJohn W. and Jeanne M. Rowe
Allstate Insurance Company	Food for Thought Catering	National Endowment for the Arts	Barbara and Barre Seid Foundation
A. N. and Pearl G. Barnett Foundation	Julius Frankel Foundation	Northern Trust	The Shubert Foundation
BlueCross BlueShield of Illinois	Ellen and Paul Gignilliat	Sheila Penrose and Ernie Mahaffey	The Harold and Mimi Steinberg Charitable Trust
Joyce Chelberg	KPMG LLP	Polk Bros. Foundation	Carl and Marilyn Thoma
The Chicago Community Trust	ITW	Peter and Alicia Pond	
Exelon	Jan and Bill Jentes	Richard W. Porter and Lydia S.	
	The John D. and Catherine T. MacArthur Foundation		

## DESIGNATED AND ENDOWED FUNDS

### *The Chicago Shakespeare Trust:*

Robert R. McCormick Foundation  
Barbara and Richard Franke  
Kraft Foods  
Bartlit Beck Herman Palenchar & Scott LLP  
PNC

### *Programming Upstairs*

*at Chicago Shakespeare in the  
Carl and Marilyn Thoma Theater:*

Hyatt Hotels Corporation

### *Endowed Funds:*

Nicholas and Mary Babson Fund to Support Chicago Actors  
Chicago Shakespeare Theater Fund at The Chicago Community Trust  
The Davee Foundation World's Stage Fund  
The Hurckes Fund for Artisans and Technicians  
Kirkland & Ellis Audience Enrichment Fund  
Anstiss and Ronald Krueck Stage Design Fund  
Gayle and Glenn R. Tilles Music Fund  
The Sheldon and Bobbi Zabel Bard Core Program

For more information about how you can support our work on stage, in the community and around the world, please contact Brooke Walters, Director of Institutional Advancement, at 312.595.5581 or [bwalters@chicagoshakes.com](mailto:bwalters@chicagoshakes.com).

## A MESSAGE FROM



**Barbara Gaines**  
Artistic Director



**Criss Henderson**  
Executive Director

## DEAR FRIENDS

Welcome to Chicago Shakespeare Theater for *Shrek the Musical*. We are so pleased to present this musical adventure for family audiences as the first production of our exciting 2013/14 Season. Family programming at our Theater has long been a summer tradition, and we delight in producing plays of the highest quality for our youngest audience members. Our hope is that today's performance serves to introduce young people to the performing arts, sparking a lifelong interest in theater. Throughout the year ahead, there are many opportunities for you to enjoy Chicago Shakespeare Theater productions with your family. Whether it is our abridged production of *The Comedy of Errors* touring through Chicago's parks this summer, our *Short Shakespeare!* *A Midsummer Night's Dream* on the Courtyard Theater stage, a visiting international theatrical experience, or one of our full-length productions of Shakespeare's masterpieces, our Theater offers a full complement of vibrant productions for audiences of all ages. We look forward to welcoming you back to the Theater soon!

# Cast

(in order of appearance)

Mama Ogre	ALEXIS J. ROGERS*
Papa Ogre	JOEY STONE*
Baby Shrek	CAMERON CONFORTI, MATTHEW UZARRAGA
Shrek	MICHAEL AARON LINDNER*
Farquaad's Guard	TRAVIS TAYLOR*
Pinocchio	ADAM FANE
Big Bad Wolf	NORM BOUCHER*
Three Little Pigs	LIAM QUEALY, WILL SKRIP, TOMMY LUCAS ( <i>through August 11</i> ), JON JORGENSEN ( <i>beginning August 15</i> )
Wicked Witch	SARAH PAGE
Ugly Duckling	CAROLINE HEFFERNAN, EMILY LEAHY
Peter Pan	REBECCA PINK*
Mama Bear	ALEXIS J. ROGERS*
Papa Bear	JOEY STONE*
Baby Bear	CAMERON CONFORTI, MATTHEW UZARRAGA
Donkey	JAMES EARL JONES II*
Farquaad's Guard	TOMMY LUCAS ( <i>through August 11</i> ), JON JORGENSEN ( <i>beginning August 15</i> )
Lord Farquaad	TRAVIS TAYLOR*
Gingy	REBECCA PINK*
Thelonius	NORM BOUCHER*
Young Fiona	CAROLINE HEFFERNAN, EMILY LEAHY
Teen Fiona	REBECCA PINK*
Fiona	SUMMER NAOMI SMART*
Knights	LIAM QUEALY, WILL SKRIP, TOMMY LUCAS ( <i>through August 11</i> ), JON JORGENSEN ( <i>beginning August 15</i> )
Three Blind Mice	SARAH PAGE, REBECCA PINK*, ALEXIS J. ROGERS*
Dragon	ALEXIS J. ROGERS*
Bluebird	REBECCA PINK*
Bishop	TOMMY LUCAS ( <i>through August 11</i> ), JON JORGENSEN ( <i>beginning August 15</i> )
Dwarf	NORM BOUCHER*
Ensemble	NORM BOUCHER*, CAMERON COMFORTI, ADAM FANE, CAROLINE HEFFERNAN, JON JORGENSEN, EMILY LEAHY, TOMMY LUCAS, SARAH PAGE, REBECCA PINK*, LIAM QUEALY, WILL SKRIP, JOEY STONE*, MATTHEW UZARRAGA

Understudies never substitute for listed players unless an announcement is made at the time of the performance:  
Eric Lewis for Papa Ogre, Papa Bear, Little Pig, Knight, Ensemble; Tommy Lucas for Shrek; Nathan Mittleman for Little Pig,  
Knight, Guard, Bishop, Ensemble; Emily Olcott for Peter Pan, Gingy, Teen Fiona, Bluebird, Wicked Witch, Blind Mouse, Ensemble;  
Sarah Page for Mama Bear, Mama Ogre, Blind Mouse, Dragon; Liam Quealy for Pinocchio, Ensemble; Jason Richards for  
Big Bad Wolf, Thelonius, Dwarf, Ensemble; Will Skrip for Farquaad, Guard; Joey Stone for Donkey; Colette Todd for Fiona.

\*denotes member of Actors' Equity Association.

# Musical Numbers

## OVERTURE

**BIG, BRIGHT, BEAUTIFUL WORLD, PART ONE**

**BIG, BRIGHT, BEAUTIFUL WORLD, PART TWO**

**STORY OF MY LIFE**

**GOODBYE SONG**

**WHAT'S UP DULOC, PART ONE**

**WHAT'S UP DULOC, PART TWO AND REPRISE**

**I KNOW IT'S TODAY**

**TRAVEL SONG**

**FOREVER**

**THIS IS HOW A DREAM COMES TRUE**

**MORNING PERSON**

**I THINK I GOT YOU BEAT**

**MAKE A MOVE**

**WHEN WORDS FAIL**

**MORNING PERSON REPRISE**

**THE ARRIVAL OF FARQUAAD**

**BIG, BRIGHT, BEAUTIFUL WORLD REPRISE**

**FREAK FLAG**

**FINALE/THIS IS OUR STORY**

Orchestra

Mama Ogre, Papa Ogre

Shrek

Fairytale Creatures

Fairytale Creatures

Ensemble

Farquaad, Ensemble

Young Fiona, Teen Fiona, Fiona

Donkey, Shrek

Dragon, Donkey, Knights

Fiona, Donkey, Dragon

Fiona, Bluebird

Fiona, Shrek

Donkey, Blind Mice

Shrek

Fiona

Farquaad

Shrek

Ensemble

Fiona, Shrek, Donkey, Ensemble

## Orchestra

Conductor/Keyboard

Flute/Piccolo/Clarinet/Alto Sax/Contractor

Acoustic & Electric Guitars/Ukulele/Keyboard

Drums/Percussion/Keyboard

**TOM VENDAFREDDO**

**SEAN McNEELY**

**MATT DEITCHMAN**

**ETHAN DEPPE**

*All Musicians are members of the Chicago Federation of Musicians, Local 10-208.*

## A NOTE GREETING OUR AUDIENCE

Welcome. If we can help accommodate you during your visit, please speak with our House Manager. Please note that haze, fog and flashing lights will be used during this performance. Also, actors will make entrances and exits throughout the theater. For your safety, we ask that you keep aisles and doorways clear. We request that you refrain from taking any photography, and video or audio recording of this production.



# Profiles



## NORM BOUCHER

(*Big Bad Wolf/Thelonus/Dwarf*) returns to Chicago Shakespeare Theater, where he was featured in the Jeff Award-winning *The Comedy of Errors*. Other Chicago credits include: Nathan Detroit in *Guys and Dolls*, Max Bialystock in *The Producers* (Theatre at the Center); Oscar Madison in *The Odd Couple* (Drury Lane Theatre Oakbrook); *Once Upon a Time in New Jersey*, *West Side Story* (Marriott Theatre); *Caught in the Net* (Drury Lane Theatre Evergreen Park); *The Liquid Moon* (Chicago Dramatists); Bottom in *A Midsummer Night's Dream* and the title role in *Macbeth* (Equity Library Theatre). Regional credits include: *Fanny Brice: America's Funny Girl* (Asolo Rep); Lieutenant Columbo in *Columbo Takes the Rap* (International Mystery Writers' Festival); *Dirty Blonde* (Madison Repertory Theatre); Cladwell in *Urinetown* (Mason St. Warehouse). Television credits include: *Early Edition* (CBS), and numerous commercials, including two Super Bowl ads.



## CAMERON CONFORTI

(*Baby Shrek/Baby Bear*) makes his Chicago Shakespeare Theater debut. Other Chicago credits include: *Oliver* (Drury Lane Theatre); *Disney's Beauty and the Beast, Jr.* (Fox Valley

Repertory Theatre); and *A Christmas Carol* (Goodman Theatre). National advertising credits include: VTech, Radio Flyer, Kohl's, McDonald's and Horizon Organic. Cameron attended his first acting and modeling classes at the age of four. He will be attending fifth grade this fall.



## ADAM FANE

(*Pinocchio*) makes his Chicago Shakespeare Theater debut. Other Chicago credits include: *Rock of Ages* (national tour); *Alice in Wonderland* (Marriott Theatre); *Signs of Life*—reading (Victory Gardens Theater); *Aspects of Love*, *The Light in the Piazza* (Theo Ubique Cabaret Theatre); *Spring Awakening* (Griffin Theatre Company); *Hello Again* (Bohemian Ensemble Theatre); and *Avenue Q* (Jeff Award nomination, NightBlue Performing Arts). Regional credits include work with Mason Street Warehouse, Timberlake Playhouse and the Heartland Festival. Recently Mr. Fane received his BFA in musical theatre from Roosevelt University.



## CAROLINE HEFFERNAN

(*Ugly Duckling/Young Fiona*) makes her Chicago Shakespeare Theater debut. Other Chicago credits include: Annie in *Annie* (Paramount Theatre); Young Kim in *Showboat* (Chi-

cago Lyric Opera); Skilling's daughter in *Enron* (TimeLine Theatre Company); Scout in *To Kill a Mockingbird* (Steppenwolf Theatre Company); two seasons as Emily Cratchit in *A Christmas Carol* (Goodman Theatre); Leah in *Wonders Never Cease* (Provision Theater); and Jenny in *Rhymes with Evil* (Infusion Theatre Company). Commercial credits include: Flintstones Vitamins, Guaranty Bank and Kellogg's Eggo Waffles. Caroline received an outstanding actress award in Collaboration Sketchbook, Chicago's annual festival of plays, and has participated in multiple staged readings with Chicago Dramatists. She is also an award-winning USAG gymnast since the age of five.



## JAMES EARL JONES II

(*Donkey*) makes his Chicago Shakespeare Theater debut. Recent credits include: *Cymbeline* (First Folio Theatre) and *Will You Stand Up?*—educating people about mental wellness (Erasing the Distance). Other credits include: *Sweet Charity* (Writers' Theatre); *Dreamgirls*, *The Full Monty* (Marriott Theatre); *Mr. Rickey Calls a Meeting* (Lookingglass Theatre Company); *Porgy and Bess* (Court Theatre, Lyric Opera Chicago, San Francisco Opera); *The Wiz* (Jeff Award nomination, Theater at the Center); *Aida*, *Spamalot*, *Ragtime* (Drury Lane Theatre Oakbrook); *A Civil War Christmas* (Northlight Theatre); *Annie Get Your Gun* (Ravinia Festival); *25th Annual Putnam County Spelling Bee*



(Broadway in Chicago, Mason Street Workshop), *Dessa Rose* (Appletree Theatre); *Aspects of Love*, *I Pagliacci*, *On the Town*, *The Gondoliers*, *Patience*, *H.M.S. Pinafore* and *The Pirates of Penzance*. Mr. Jones has garnered Black Theatre Alliance Awards and Black Excellence Awards. His voice can be heard on various commercials.



### JON JORGENSON

(*Little Pig/Farquaad's Guard/Knight/Bishop*, beginning August 15) makes his Chicago debut at Chicago Shakespeare Theater. Mr. Jorgenson recently received his BFA from Carnegie Mellon University, where he won the Thomas Auclair Memorial Award, as well as the John Arthur Kennedy Award for Excellence in Acting.



### EMILY LEAHY

(*Ugly Duckling/Young Fiona*) makes her Chicago Shakespeare Theater debut. Emily made her professional stage debut at four years old as Macy in *Dollhouse* (Goodman Theatre). Other credits include: multiple roles in the Jeff Award-winning play *The Big Meal* (American Theater Company); Zuzu in *It's a Wonderful Life—A Live Radio Play* (Fox Valley Repertory); Tootie in *Meet Me in St. Louis* (Drury Lane Theatre Water Tower); Marta in *The Sound of Music*; Baby June in *Gypsy*; Jojo in *Seussical*

*The Musical* (Drury Lane Theatre Oakbrook); Pepper in *Annie* and *The Music Man* (Paramount Theatre). Commercial credits include Billy the Terminator, Luna Carpet and Bob Evans. Emily will be entering seventh grade in the fall. She also enjoys dancing and tumbling.



### MICHAEL AARON LINDNER

(*Shrek*) returns to Chicago Shakespeare Theater, where he appeared in *Sunday in the Park with George*, *A Midsummer Night's Dream* and *The Little Mermaid*. Other Chicago credits include: Edna in *Hairspray*, *Oliver*, *Ragtime* (Drury Lane Theatre Oakbrook); Fezzwig in *A Christmas Carol* (Goodman Theatre); *Hero*, *White Christmas*, *Seussical The Musical*, *For the Boys*, *Guys and Dolls*, *The Producers*, *Into the Woods*, *The Wizard of Oz*, *Cats*, *Annie Get Your Gun*, *Funny Girl*, *1776* (Marriott Theatre); *Bach at Leipzig* (Writers' Theatre); *The Full Monty* (Drury Lane Theatre Water Tower); *The Secret Garden*, *Sweeney Todd* (Jeff Award, Porchlight Music Theatre); and *Dirty Blonde* (Apple Tree Theatre). National tour credits include *Mamma Mia!* Regional credits include *The Full Monty*, *Cats*, *Mame* (Maine State Music Theatre) and *Carousel* (Madison Repertory Theatre). Mr. Lindner received his BA in musical theatre from Southern Illinois University in Carbondale.



### TOMMY LUCAS

(*Little Pig/Farquaad's Guard/Knight/Bishop*, through August 11) returns to Chicago Shakespeare Theater, where he understudied Cogsworth and Maurice in *Beauty and the Beast*. Other Chicago credits include: *Annie*, *The Music Man* (Paramount Theatre); *Seussical The Musical* (Drury Lane Theatre Oakbrook); and *The Rivals* (Polarity Ensemble Theatre). Regional credits include: *The Full Monty*, *Run for Your Wife* (Allenberry Playhouse); *Twelfth Night* (TimeSpace Theatre Company); and *A Christmas Carol* (NTC Productions). Mr. Lucas holds a BA in theatre from Bradley University.



### SARAH PAGE

(*Wicked Witch/Blind Mouse*) makes her Chicago Shakespeare Theater debut. Other Chicago credits include: *Sunset Boulevard*, *Nunsensations!*, *Once Upon a Mattress*, *Of Thee I Sing* (Drury Lane Theatre Oakbrook); *The Merry Widow*, *Carnival*, *Candide*, *Sweethearts* (Light Opera Works); *Company* (BrightSide Theatre); *Joseph and the Amazing Technicolor Dreamcoat* (New American Theater, Rockford); and multiple productions with Pheasant Run Theater and Illinois Theatre Center. Ms. Page earned her BFA in musical theatre performance from the Chicago

College of Performing Arts at Roosevelt University.



## REBECCA PINK

(*Peter Pan/Gingy/Teen Fiona/Bluebird*) returns to Chicago Shakespeare Theater, where she previously appeared in *Beauty and the Beast*. Other Chicago credits include: Charlotte/Strawberry Seller in *Oliver*, Penny in *Hairspray* (Drury Lane Theatre Oakbrook); *Joseph and the Amazing Technicolor Dreamcoat* (Paramount Theatre); *The Wiz*, *Jesus Christ Superstar*, *Footloose* (Theatre at the Center); *Brigadoon* (Light Opera Works); *Jennyanydots/Jemima in Cats* (Theo Ubique Cabaret Theatre); Saunders in *Murder Center Stage* and Holly in *Nickel and Dime* (Artists' Ensemble).



## LIAM QUEALY

(*Little Pig/Knight*) returns to Chicago Shakespeare Theater, where he appeared in *Beauty and the Beast*. Other Chicago credits include: *My Fair Lady*, *Joseph and the Amazing Technicolor Dreamcoat*, *Mark in A Chorus Line*, *Annie* (Paramount Theatre); *Pirates of Penzance* (Marriott Theatre); and most recently, *Sweet Charity* (Writers' Theatre). Off Broadway credits include Bobby in *Dear Edwina*. National tour credits include *Fiddler on the Roof*. Mr. Quealy is also an Eagle Scout.



## ALEXIS J. ROGERS

(*Mama Ogre/Mama Bear/Dragon/Blind Mouse/Dragon*) makes her Chicago Shakespeare Theater debut. Other Chicago credits include: *Lady Day at Emerson's Bar and Grill*, *Ragtime* (Porchlight Music Theatre); *Dreamgirls* (Marriott Theatre); *Ain't Misbehavin'*, *Crowns* (Goodman Theatre); *Hairspray* (Drury Lane Theatre Oakbrook); *Hair* (Paramount Theatre); *Porgy and Bess*, *Spunk*, *The Piano Lesson* (Court Theatre); *The Old Settler* (Writers' Theatre); *Seven Guitars*, *The Colored Museum*, *The Nativity* (Congo Square Theatre Company); *The Wiz* (Theatre at the Center); *Don't Make Me Over: A Tribute to Dionne Warwick*, *Sounds So Good Makes You Wanna Hollar* (Black Ensemble Theater); *Trouble the Water* (MPAACT); and *If All the World Were Paper* (Chicago Children's Theatre). Regional credits include work with: The New Theatre Restaurant, The Kennedy Center and Shakespeare Theatre Company in Washington, D.C. Television credits include *Chicago Code* (FOX). Ms. Rogers received a BFA in musical theatre from Howard University.



## WILL SKRIP

(*Little Pig/Knight*) returns to Chicago Shakespeare Theater, where he understudied Young Ben in *Follies*. Other Chicago credits include: *Sunset Boulevard*, *Singin' in the Rain* (Drury Lane Theatre Oakbrook); *Le-*

*gally Blonde*, *Cinderella* and *Seussical The Musical* (Marriott Theatre). Regional credits include Fyedka in *Fiddler on the Roof* (The Little Theatre on the Square) and *Chicago* (Peninsula Players). Mr. Skrip is a graduate of Northwestern University.



## SUMMER NAOMI SMART

(*Fiona*) makes her Chicago Shakespeare Theater debut. Other Chicago credits include: *Wicked* (first national sit-down production); *Sweet Charity* (Jeff Award), *Ragtime*, *Hot Mikado* (Drury Lane Theatre Oakbrook); *The Light in the Piazza* (Jeff Award), *Legally Blonde*, *Hero*, *My One and Only* (Marriott Theatre); *Barium* (Mercury Theater); and *Camelot in Concert* (Ravinia Festival). Regional credits include productions with: Cleveland Playhouse, Maltz Jupiter Theatre, Fireside Theatre, Tuacahn Center for the Arts, Disney Entertainment (CA) and Robert Redford's Sundance Institute. Television credits include *Good Luck Charlie* (Disney Channel). Ms. Smart received a BFA in music/dance/theatre from Brigham Young University.



## JOEY STONE

(*Papa Ogre/Papa Bear*) makes his Chicago Shakespeare Theater debut. Other Chicago credits include: the Leading Player in *Pippin* (Music Theatre Company); *Candide* (Goodman Theatre); *The Nutcracker* (House Theatre of Chicago); *The Snow Queen* (Victory Gar-

dens Theater); *Seussical The Musical*, *Cabaret*, *Funny Girl*, *Sweet Charity*, *Mame*, *Curtains* and *Boys from Syracuse* (Drury Lane Theatre Oakbrook). Regional credits include productions with: Shakespeare Theatre Company, Huntington Theatre Company, The Arscht Center, Derby Dinner Playhouse, New Stage Collective and Mercury Theater. Mr. Stone studied musical theatre at the College-Conservatory of Music, University of Cincinnati.



#### TRAVIS TAYLOR

(*Farquaaad's Guard/Lord Farquaaad*) returns to Chicago Shakespeare Theater, where he previously appeared in *Sunday in the Park with George* and as Beast/Prince in *Beauty and the Beast*. Other Chicago credits include: *Sweeney Todd*, *Seven Brides for Seven Brothers*, *Sugar* (Drury Lane Theatre Oakbrook); *Pirates of Penzance* (Marriott Theatre); *Camelot*, *The Secret Garden*, *Brigadoon* (Light Opera Works); and *Into the Woods* (Porchlight Music Theatre). Regional credits include work with Rocky Mountain Repertory Theatre and The Little Theatre On The Square. Mr. Taylor received a BFA in musical theatre from the Theatre Conservatory of Chicago College of Performing Arts at Roosevelt University.



#### MATTHEW UZARRAGA

(*Baby Shrek/Baby Bear*) makes his Chicago Shakespeare Theater debut. Other Chicago credits include: *Oliver!* (Drury

Lane Theatre Oakbrook) and *Joseph and the Amazing Technicolor Dreamcoat* (Paramount Theatre). Local community credits include *The Music Man* and Rodgers and Hammerstein's *Cinderella* (Kaneland Community Fine Arts Festival). Commercial credits include Shout and U.S. Cellular. Matthew has been trained in tumbling.

#### RACHEL ROCKWELL

(*Director/Choreographer*) returns to Chicago Shakespeare Theater, where she directed *Short Shakespeare! Romeo and Juliet*, *Beauty and the Beast*, *Short Shakespeare! The Taming of the Shrew*, *The Adventures of Pinocchio* and *The Emperor's New Clothes*. Other Chicago directing/choreography credits include: *Oliver!*, *Sweeney Todd* (Jeff nomination for Best Musical and Best Director), *The Sound of Music* (Jeff nomination for Best Musical and Best Director), *Ragtime* (Jeff Award for Best Musical and Best Director), *Miss Saigon* (Jeff nomination for Best Musical and Best Director, Drury Lane Theatre); *Shout!* (Jeff nomination for Best Revue), *42nd Street* (Jeff nomination for Best Director and Best Musical), *The 25th Annual Putnam County Spelling Bee* (Jeff nomination for Best Musical); *The Music Man*, *Annie*, *Hair* (Paramount Theatre); *Enron* (Jeff nomination for Best Play, mid-size, TimeLine Theatre Company); *John and Jen* (Apple Tree Theatre); *You're a Good Man, Charlie Brown!* (Drury Lane Water Tower Place); *Leaving Iowa* (Fox Valley Repertory); *Married Alive* and *It's a Wonderful Life: A Live Radio Play* (Noble Fool Theatricals). In 2012 Rachel was named Chicagoan of the Year in Theatre by the *Chicago Tribune*.

#### MICHAEL MAHLER

(*Music Director*) returns to Chicago Shakespeare Theater, where the family musical *How Can You Run with a Shell on Your Back?* that he wrote with Alan Schmuckler premiered in 2007 (also featured in the National Alliance for Musical Theatre's 2009 Festival of New Musicals). Mr. Mahler is the Jeff Award-winning composer/lyricist of *Hero*, *Krute Rockne: All-American*, *The Christmas Miracle of Jonathan Toomey* and others. His songs have been performed in concerts and showcases around the globe, including the MAC/ASCAP songwriter showcase and an evening at the Kennedy Center. Previous music directing credits include: *The Music Man* (Paramount Theatre); *My One and Only*, *White Christmas*, *My Fair Lady*, *Joseph* (Jeff Award nomination), *Bowery Boys* (Marriott Theatre); *Hot Mikado* (Jeff Award nomination, Drury Lane Theatre); and *High Fidelity* (Route 66 Theatre). His band The Lincoln Squares has a debut EP available online. Visit [www.michaelmahler.com](http://www.michaelmahler.com) and [thelincolnsquares.com](http://thelincolnsquares.com)

#### DAVID LINDSAY-ABAIRE

(*Book and Lyrics*) was most recently nominated for two Tony Awards for his work on *Shrek The Musical*: Best Book of a Musical and Best Score (with composer Jeanine Tesori). Prior to that he was awarded the 2008 Ed Kleban Award as America's most promising musical theater lyricist and the 2007 Pulitzer Prize for Drama for his play *Rabbit Hole*, which premiered on Broadway at MTC's Biltmore Theatre. *Rabbit Hole* also received five Tony Award nominations, including Best Play, and the Spirit of America Award. His other shows include: *Fuddy Meers*, *Kimberly Akimbo*, *Wonder of the World*, *High Fidelity* and *A Devil Inside*,

among others. In addition to his work in theater, Mr. Lindsay-Abaire's screen adaptation of *Rabbit Hole* starred Nicole Kidman and was directed by John Cameron Mitchell. Mr. Lindsay-Abaire is a proud New Dramatists alumus, a graduate of Sarah Lawrence College and the Julliard School, and is a member of the WGA and the Dramatists Guild Council.

## JEANINE TESORI

(Music) has written three Tony-nominated scores for Broadway: *Twelfth Night* (Lincoln Center); *Thoroughly Modern Millie* (lyrics, Dick Scanlan); and *Caroline, or Change* (lyrics, Tony Kushner; director, George C. Wolfe). The National Theatre production of *Caroline, or Change* in London received the Olivier Award for Best New Musical. Her first musical, *Violet*, written with Brian Crawley, received the NY Drama Critics Circle Award. She has received Drama Desk and Obie Awards, and was cited by ASCAP as the first woman composer to have "two new musicals running concurrently on Broadway." She composed the music for the New York Shakespeare Festival's *Mother Courage*, directed by George C. Wolfe and translated by Tony Kushner. Film scores include: *Nights in Rodanthe*, *Winds of Change*, *Show Business* and *Wrestling With Angels*. She composed songs for the movie *Shrek the Third* and for the Disney DVD releases *Mulan II*, *Lilo and Stitch II* and *The Little Mermaid III*. Ms. Tesori is a member of the Dramatists Guild. She is a graduate of Barnard College and lives in Manhattan with her husband Michael Rafter and daughter Siena.

## SCOTT DAVIS

(Scenic Designer) returns to Chicago Shakespeare Theater, where his credits include: *Othello: The Remix* (CST, London, Germany, Edinburgh), *Cadre, Beauty and the Beast*, *Murder for Two*, *Short Shakespeare! Romeo and Juliet* and *Short Shakespeare! Macbeth*. Other Chicago credits include productions with: Goodman Theatre, Steppenwolf Garage, Court Theatre, Victory Gardens Theater, Drury Lane Theatre, Northlight Theatre, American Theater Company, Griffin Theatre, Steep Theater and Northwestern University. Regional credits include productions with: Milwaukee Repertory Theater, Clarice Smith Performing Arts Center, Rep Stage and Dallas Theatre Center. Mr. Davis serves as adjunct faculty at Columbia College having received degrees from the University of Maryland College Park and Northwestern University.

## THERESA HAM

(Costume Designer) returns to Chicago Shakespeare Theater, where her credits include *Short Shakespeare! Romeo and Juliet* and *Beauty and the Beast*. Other Chicago credits include productions with: Drury Lane Theatre, Northlight Theatre, Paramount Theatre, The Ryan Opera Center at Lyric Opera Chicago, DePaul Opera Theatre, Porchlight Music Theatre, Bohemian Theatre Ensemble (Artistic Affiliate), Theater on the Lake, Stage Left Theatre and First Folio Theatre. Regional credits include: The Little Theatre on the Square, TheatreWorks and Quality Hill Playhouse. Upcoming projects include: *Hello Dolly!* (Drury Lane Theatre); *42nd Street* and *RENT* (Paramount Theatre). Ms. Ham is the recipient of a non-equity Jeff Award for *The Glorious Ones* (Bohemian Theatre Ensemble). She received a

BA in theatre from Eastern Illinois University, an MFA in costume design from Illinois State University, and is an adjunct faculty member at Wilbur Wright College.

## JESSE KLUG

(Lighting Designer) returns to Chicago Shakespeare Theater for his fourteenth production with credits including: *Othello: The Remix* (CST, Germany, Edinburgh), *Cadre*, *Murder for Two*, *How Can You Run with a Shell on Your Back?*, *The Three Musketeers* and *Seussical The Musical*. Other Chicago credits include productions with: Marriott Theatre, Goodman Theatre, Broadway in Chicago, Victory Gardens Theater, Lookingglass Theatre Company, Steppenwolf Theatre Company, Court Theatre, Writers' Theatre, American Theater Company, TimeLine Theatre Company and Chicago Dramatists. Off Broadway credits include: *The Elaborate Entrance of Chad Deity* (Lucile Lortel Award Nomination and Henry Hewes Award Nomination, Second Stage); *The Screw Tape Letters* (Westside Arts and the national tour); *Romulus* (Guggenheim Museum); and *The Hourglass* (NYMF). Regional credits include productions with: Milwaukee Repertory Theater, Fulton Theatre, Portland Center Stage, Indiana Repertory Theatre, Asolo Repertory Theatre, Shakespeare Theatre Company and Arizona Theatre Company. Mr. Klug has received an After Dark Award, a Jeff Award and is a fourteen-time Jeff Award nominee.

## MIKE TUTAJ

(Projection Designer) returns to Chicago Shakespeare Theater, where his credits include: *Sunday in the Park with George*, *Beauty and the Beast*, *Timon of Athens*, *A Midsummer Night's Dream*, *The Feast: an intimate*

*Tempest*, *Macbeth* and *Romeo y Julieta*. Other Chicago credits include productions with: Goodman Theatre, Steppenwolf Theatre Company, Court Theatre, Victory Gardens Theater, Drury Lane Theatre, Writers' Theatre, TimeLine Theatre Company, American Theater Company, Silk Road Rising and Hillary A. Williams LLC. He is the recipient of a non-equity Jeff Award, two Jeff Awards and the Michael Magglio Emerging Designer Award. Mr. Tutaj is an artistic associate with TimeLine Theatre Company and a company member of Barrel of Monkeys Productions.

## GARTH HELM

(*Sound Designer*) returns to Chicago Shakespeare Theater, where he designed sound for *Beauty and the Beast*. Other Chicago credits include: *The Most Happy Fella* (Ravinia Festival); Barry Manilow's *Could It Be Magic?* (Mercury Theater); *The Buddy Holly Story*, *Evita*, *Ragtime*, *Sweeney Todd*, *The Sound of Music*, *Xanadu* and *Oliver* (Drury Lane Theatre Oakbrook). Broadway designs include *Pippin*. (Tony Award nomination) and *Ghost the Musical* (associate sound designer). US associate sound design credits include: *We Will Rock You* (Fall 2013), *Les Misérables 25<sup>th</sup> Anniversary Concert* (02 Arena, London), *Priscilla Queen of the Desert* (NYC and US Tour), *Dirty Dancing* and *Phantom—The Las Vegas Spectacular*, as well as production or advance sound supervisor for *The Phantom of the Opera* (Broadway), *The Pirate Queen* (Chicago and NYC), all North American productions of *Ragtime*, *Fosse*, *Seussical The Musical*, *Sunset Boulevard* (Toronto and Vancouver), Hal Prince's *Show Boat* (Chicago and Toronto) and various tours by Livent, Inc.

## MELISSA VEAL

(*Wig and Make-up Designer*) has designed wigs and make-up for seventy productions at CST, including: *Henry VIII*, *Julius Caesar*, *The School for Lies*, *Sunday in the Park with George*, *Othello: The Remix* (CST, London, Germany, Edinburgh), *Timon of Athens*, *Elizabeth Rex* (Jeff Award nomination), *Follies*, *The Madness of George III* (Jeff Award), *As You Like It*, *Twelfth Night*, *Macbeth*, *Amadeus*, *Funk It Up About Nothin'*, *Othello*, *Passion*, *Troilus and Cressida*, *Henry IV Parts 1 and 2* (at CST and the Royal Shakespeare Company), *Rose Rage: Henry VI Parts 1, 2 and 3* (at CST and The Duke on 42nd Street), and all seven *CPS Shakespeare!* productions. She worked for ten seasons with the Stratford Festival, where she received four Tyrone Guthrie Awards, including the Jack Hutt Humanitarian Award. Other Canadian credits include work with: Shaw Festival, Mirvish Productions and The Grand Theatre in London, Ontario. Ms. Veal received the 2007 Hurckes Award for Artists and Technicians.

## JAMES SAVAGE

(*Special Effects Designer*) is head of the sound department at Chicago Shakespeare Theater, where he designed special effects for *Richard III*, *Macbeth* and *Cymbeline*. Over thirty Chicago Shakespeare sound design credits include: *Othello: The Remix* (CST, London, Germany, Edinburgh), *Murder for Two* (Jeff Award nomination), *Funk It Up About Nothin'* (CST, Edinburgh, Australian tour, London), *Disney's Aladdin*, *Twelfth Night*, *Willy Wonka*, *Othello*, *Passion*, *How Can You Run with a Shell on Your Back?*, *Hamlet*, *A Flea in Her Ear*, *The Princess and the Pea*, *Seussical The Musical*, *Peter Pan*, *Much Ado About Nothing*, *A Little Night Music*, multiple *Short Shakespeare!* productions, all

seven *CPS Shakespeare!* productions, and work on other productions since 2002. He has served as the lead mix engineer with the Alabama Shakespeare Festival and Utah Shakespeare Festival. Regional design credits include sound design for Sondheim's *Saturday Night* and assistant sound design for *The Hot Mikado* (University of Cincinnati-College Conservatory of Music).

## RYAN T. NELSON

(*Orchestral Reduction*) returns to Chicago Shakespeare Theater, where he conducted *Sunday in the Park with George*. His Marriott Theatre music directing credits include: *South Pacific*, *Andrew Lloyd Webber: Now and Forever*, *Hero*, *Pirates of Penzance*, *Legally Blonde*, *For the Boys*, *Shout*, *A Chorus Line*, *Once On This Island*, *Hairspray*, *The Light in the Piazza*, *All Shook Up*, *Oliver* and *Footloose*. He also orchestrated *Hero*, *Joseph and the Amazing Technicolor Dreamcoat*, *Cinderella* and *Alice in Wonderland* at the Marriott Theatre. Mr. Nelson is the music director in residence for the School of Communication at Northwestern University, where he coordinates all musical activities for the Theatre and Interpretation Center, teaches in the Music Theatre Certificate Program, and music directs and supervises several productions each year, including AMTP productions and the famed WAA-MU show. His master of music and doctor of musical arts degrees in conducting are from the University of North Texas.

## DEBORAH ACKER

(*Production Stage Manager through July 21*) has stage managed the past twenty-three seasons at Chicago Shakespeare Theater. Other stage management credits include: *Puttin' on the Ritz* (Na-



tional Jewish Theater); *Six Degrees of Separation*, *Driving Miss Daisy*, *I'm Not Rappaport* (Briar Street Theatre); *The Nerd* (Royal George Theatre); and *A...My Name Is Alice* (Ivanhoe Theatre). She has production managed extensively throughout Chicago, and has also provided lighting designs for: the Apollo Theatre, Candlelight Dinner Playhouse, Chicago Shakespeare Theater's Team Shakespeare, the Museum of Science and Industry, *Some Like It Cole* (tour), and *Pump Boys and Dinettes* in Branson, Missouri.

## BETH ELLEN SPENCER

(Assistant Stage Manager through July 21/Production Stage Manager, beginning July 22) returns to Chicago Shakespeare Theater, where her credits include *Beauty and the Beast*. Other Chicago stage management credits include: *Candide* (Goodman Theatre); *Samuel J. and K.* (Steppenwolf Theatre Company); *Proof* (Court Theatre); *Annie*, *The Music Man*, *Hair* (Paramount Theatre); *The Sound of Music*, *Sweeney Todd* (Drury Lane Theatre); and *Joseph and the Amazing Technicolor Dreamcoat* (Marriott Theatre). Regional stage management credits include: *Candide*, *Old Times* (Shakespeare Theatre Company); and six years with Kansas City Repertory Theatre, where she served as production stage manager and assistant stage manager for many shows, including *Into The Woods*, *Arabian Nights*, *Broke-o-logy*, *Borderland*, *A Christmas Story*, *the Musical!*, *Venice*, and numerous productions of *A Christmas Carol*. With Heart of America Shakespeare Festival, Ms. Spencer served as the production stage manager for five seasons, including productions

of *King Richard III*, *The Merry Wives of Windsor*, *Othello*, *Romeo and Juliet* and *King Henry V*.

## AMBER JOHNSON

(Assistant Stage Manager, beginning July 22) makes her Chicago Shakespeare Theater debut. Other Chicago credits include: *Still Alice* (Lookingglass Theatre Company); *The Book of Mormon*, *Jersey Boys* (stage manager substitute, Broadway in Chicago); *Skylight*, *Jitney*, *Angels in America Parts 1 & 2*, *Spunk*, *The Comedy of Errors*, *Three Tall Women* (Court Theatre); *Welcome Home Jenny Sutter* (Next Theatre Company); *A Girl With Sun in Her Eyes* (Pine Box Theatre); *The Colored Museum* (Congo Square Theatre Company); *The MLK Project* (Writers' Theatre); *It's a Wonderful Life: Live at the Biograph!* (American Blues Theater); *Three Sisters* (Strawdog Theatre Company) and *Orange Flower Water* (Steppenwolf Theatre Company). Regional credits include productions with Williamstown Theatre Festival and Antelope Valley Ballet. Ms. Johnson graduated from the University of Oklahoma with a BFA in theatre with stage management emphasis.

## JASON MOORE

(Broadway Director) Broadway credits include *Avenue Q* and *Steel Magnolias*. Carnegie Hall credits include *Jerry Springer: The Opera*. Off Broadway credits include *Speech and Debate* (Roundabout Theatre Company); *Avenue Q* (Vineyard Theater); *Guardians* (Culture Project); and *The Crumple Zone*. Associate directing credits include *Les Misérables* (Broadway, national tour) and *Ragtime* (Vancouver). Writing credits include *The Floatplane Notebooks* (Charlotte Reperto-

ry Theatre). Television directing credits include: episodes of *Dawson's Creek*, *Everwood*, *One Tree Hill* and *Brothers and Sisters*. Mr. Moore has a BS in performance studies from Northwestern University.

## BOB MASON

(Artistic Associate/Casting Director) is in his fourteenth season as CST's casting director, where his credits include over eighty productions and twenty-nine plays of Shakespeare's canon. In addition to eighteen productions with Artistic Director Barbara Gaines, other CST productions of note include: a quintet of Stephen Sondheim musicals (*Pacific Overtures*, *Sunday in the Park with George*, *A Little Night Music*, *Passion and Folies*) directed by Gary Griffin; as well as *Rose Rage: Henry VI Parts 1, 2 and 3* directed by Edward Hall; and *The Molière Comedies* directed by Brian Bedford. Additional Chicago casting credits include: the Sondheim/Hal Prince premiere of *Bounce* (Goodman Theatre and the Kennedy Center for the Performing Arts) and productions for Northlight Theatre and Northwestern University's American Music Theatre Project. Prior to casting, Mr. Mason enjoyed a fifteen-year career as a Jeff Award-winning Chicago actor and singer, and has been a visiting educator for School at Steppenwolf, Acting Studio Chicago, University of Illinois at Chicago and Northwestern University.

## RICK BOYNTON

(Creative Producer) directs CST's New Classics program devoted to new plays, musicals and adaptations, and focuses on current and future artistic production and planning. New Classics premieres include: *Cadre* (CST, Johannesburg,

Grahamstown, Edinburgh), *Othello: The Remix* (CST, London, Germany, Edinburgh), *Funk It Up About Nothin'* (CST, Edinburgh, Australian tour, London), *A Flea in Her Ear* (CST, Williamstown Theatre Festival), *The Three Musketeers* (CST, Boston, London), *The Emperor's New Clothes*, *The Adventures of Pinocchio*, *Murder for Two* (CST, New York 2013) and *The Feast: an intimate Tempest* (in collaboration with Redmoon). Former artistic director of the Marriott Theatre and multiple Jeff Award-winning actor, he has starred in productions nationally, including CST's production of *A Flea in Her Ear*, in which he played Camille (Jeff Award, After Dark Award). As casting director/associate at Jane Alderman Casting, projects included: the television series *Early Edition*, *Missing Persons*, *Untouchables* and *ER*; the films *While You Were Sleeping* and *Hoodlum*, among others; and numerous national tours. Mr. Boynton has lectured at his alma mater Northwestern University, and is president of the board of the National Alliance for Musical Theatre.



#### BARBARA GAINES

(Artistic Director) is the founder of Chicago Shakespeare Theater, where she has directed more than thirty of Shakespeare's plays. Honors include: the Tony Award for Outstanding Regional Theatre; the prestigious Honorary OBE (Officer of the Most Excellent Order of the British Empire) in recognition of her contributions strengthening British-American cultural relations; and Joseph Jefferson Awards for Best Production (*Hamlet*, *Cymbeline*, *King Lear* and *The Comedy of Errors*), and for Best Director (*Cymbeline*, *King Lear* and *The Comedy of Errors*). She received the Public Humanities Award from the Illinois Humanities Council, and is the recipient of the Spirit of Loyola Award. Ms. Gaines has received an Honorary Doctorate of Letters from University of Birmingham (UK), an Honorary Doctorate of Humane Letters from Dominican University and an Honorary Doctorate of Fine Arts from Lake Forest College. She serves on the Shakespearean Council of Shakespeare's Globe Theatre in London and is a Life Trustee of Northwestern University. She made her Lyric Opera debut directing Giuseppe Verdi's *Macbeth*.



#### CRISS HENDERSON

(Executive Director) has produced CST's past twenty-four seasons. Under his leadership the Theater has become one of the city's major cultural attractions. Honors include the Tony Award for Outstanding Regional Theater as well as multiple Laurence Olivier and Joseph Jefferson Awards. Mr. Henderson was named Arts Administrator of the Year by *Arts Management Magazine* at The Kennedy Center; was recognized among the top 40 business people under the age of 40 in *Crain's Chicago Business*; and was named Chevalier de L'Ordre des Arts et des Lettres by the Minister of Culture of France. He serves as president of the Producers' Association of Chicago area Theaters, and on the board of the League of Chicago Theatres. Mr. Henderson is director of the MFA/Arts Leadership Program, a two-year, graduate-level curriculum in arts management training created through a joint partnership between Chicago Shakespeare Theater and The Theatre School at DePaul University.



Actors' Equity Association (AEA), founded in 1913, represents more than 45,000 actors and stage managers in the United States. Equity seeks to advance, promote and foster the art of live theatre as an essential component of our society. Equity negotiates wages and working conditions, providing a wide range of benefits, including health and pension plans. AEA is a member of the AFL-CIO, and is affiliated with FIA, an international organization of performing arts unions. The Equity emblem is our mark of excellence. [www.actorsequity.org](http://www.actorsequity.org)



The Director-Choreographer is a member of the STAGE DIRECTORS AND CHOREOGRAPHERS SOCIETY, a national theatrical labor union.



All Musicians are members of the Chicago Federation of Musicians Local 10-208.

The lighting, projection, sound and associate sound designers of this production are represented by United Scenic Artists, Local USA-829 of the IATSE.



# Staff

**BARBARA GAINES**  
Artistic Director

**RICK BOYNTON**  
Creative Producer

**CRISS HENDERSON**  
Executive Director

**GARY GRIFFIN**  
Associate Artistic Director

## STAFF LEADERSHIP

**MARILYN J. HALPERIN**  
Director of Education  
and Communications

**BOB MASON**  
Artistic Associate/  
Casting Director

**LINDA ORELLANA**  
Director of Finance

**CHRIS PLEVIN**  
Director of Production

**ALIDA SZABO**  
Director of Audience  
Development

**BROOKE FLANAGAN  
WALTERS**  
Director of Institutional  
Advancement

## ARTISTIC

**MARISSA SCHWARTZ**  
Producing Associate

**KEIRA FROMM**  
Casting Associate

**ZACHARY GRAY**  
Associate Director/  
Choreographer

**REBECCA SPOONER**  
Casting Intern

## EDUCATION

**JASON HARRINGTON**  
Education Outreach  
Manager

**MOLLY TOPPER**  
Learning Programs  
Manager

**SAMUEL EVOLA**  
**JULIE STRASSEL**  
**ALANA TOMLIN**  
Education Interns

## ADMINISTRATION

**DANIEL J. HESS**  
Company Manager

**JEANNE DeVORE**  
Technology Manager

**ANDREA CRAIN**  
Database Administrator

**BRETT ELLIOTT**  
**MELISSA FAGAN**  
**KENDALL KARG**  
Arts Leadership Fellows

**ALANA RYBAK**  
Assistant Director  
of Finance

**DAN GRYZA**  
**KATHRYN PAYNE**  
Accounting Associates

**ALYSSE HUNTER**  
Accounting Assistant

**JILL FENSTERMAKER**  
Executive Assistant

**KENNETH KEACHER**  
Administrative Assistant

## ADVANCEMENT

**MARGARET REEDER**  
Associate Director of  
Advancement

**MELISSA COLLINS**  
Senior Advancement Officer,  
Major Gifts

**HILARY ODOM**  
Senior Advancement Officer,  
Institutional Relations

**KRISTEN CARUSO**  
Advancement Manager/  
Board Liaison

**SAMANTHA DECKER**  
Institutional Relations  
Coordinator

**KATIE GROGAN**  
Stewardship and  
Events Coordinator

**CHRISTOPHER PAZDERNIK**  
Annual Fund Coordinator

**TARA SMITHBERGER**  
Donor Relations  
Coordinator

**MATT FRYE**  
Advancement Intern

## MARKETING

**JULIE STANTON**  
Marketing Director

**SEAN BRENNAN**  
**HANNAH KENNEDY**  
**KIARA KINCHELOE**  
Marketing Assistants

**TONY ADAMS**  
Digital Assets Assistant

**ALLISON M. LEAKE**  
Graphic Designer/  
Production Artist

**ROBERTO ARELLANO**  
**ISABEL BETHKE**  
**BRANNON BOWERS**  
**JACQUELINE ROSE**  
Marketing Interns

## CALL CENTER

**ALEX HIGGIN-HOUSER**  
**JERICA HUCKE**  
Call Center Supervisors

**CHLOE BLUML**  
**SAMUEL EVOLA**  
**GREG HUGHES**  
**CARA POLCZYNSKI**  
**ANNABELLE YOUNG**  
Call Center  
Representatives

**NICHOLAS KERN**  
Group Sales Coordinator

**DAVE TOROPOV**  
Administrative Coordinator

## OPERATIONS/ FACILITIES

**SUSAN KNILL**  
Theater/Facility  
Manager

**DANIEL LOPEZ**  
Facilities Assistant

**ELLIOTT LACEY**  
Custodial Supervisor

**MARIBEL CUEVAS**  
**ISRAEL ESTRADA**  
**CARLTON LEVY**  
**NICOLAS RIVERA**  
Custodial Assistants

## TICKETING, GUEST SERVICES AND EVENTS

**JEFFREY CASS**  
Manager of Ticketing  
and Guest Services

**MAKEDA COHRAN**  
Events Manager

**JUSTIN POTTER**  
Box Office Supervisor

**WILL CAVEDO**  
**SETH HARMAN**  
**LAURA MIKULSKI**  
Front of House  
Supervisors

**MARK PARKER**  
Concessions Supervisor

**BETSY BEAMS**  
**SHELLY GODEFRIN**  
**MAURA PERSON**  
Lead Guest Services  
Associates

**PHIL BRANKIN**  
**EVAN CARTWRIGHT**  
**GINA FERRARO**

**MATTHEW HULTGREN**  
**KATIE NIXON**  
**JUSTIN O'BYRNE**  
**SARAH SCHULTZ**  
**ELIZABETH SUNDERHAUS**  
**CAROLINE THRASHER**  
**ALAN WEUSTHOFF**  
Guest Services Associates

**CHRIS SIMEK**  
**SHARON AND TOM McLEAN**  
Saints' Volunteer Usher  
Coordinators

## PRODUCTION

**ERICA L. SANDVIG**  
Assistant Director of  
Production

**MERYN DALY**  
Production Office Manager

**EMMALINE KEDDY-HECTOR**  
Production Management  
Apprentice

## STAGE MANAGEMENT

**DEBORAH ACKER, AEA**  
Production Stage Manager/  
Associate Producer

**BETH ELLEN SPENCER, AEA**  
Assistant Stage Manager/  
Production Stage Manager

**AMBER JOHNSON, AEA**  
Assistant Stage Manager

**KATIE-SARAH PHILLIPS**  
Young Performer Supervisor

**JESSICA McCOY**  
Stage Management Intern

**SCENERY**

EDWARD LEAHY  
Technical Director

MATT ROHNER  
ROBERT L. WILSON  
Assistant Technical  
Directors

MICHELLE LILLY  
EMILY TARLETON  
Assistant Scenic Designers

BRADLEY BURI  
Stage Crew

BRUCE COOPER  
Stage Crew Supervisor

KATIE MCBEE  
Stage Crew Apprentice

CHRISTINE RX BOLLES  
Scenic Charge Artist

MICHELLE LILLY  
Scenic Artist

JACK BIRDWELL  
DAN MATTHEWS  
CALEB McANDREW  
BILL PATON  
NATHAN SERVISS  
ADAM TODD  
House Carpenters

**COSTUMES**

RYAN MAGNUSON  
Costume Shop Manager

CATHY TANTILLO  
Costume Design Assistant

EMILY ROSE GOSS  
Costume Shop Assistant/  
Rentals Manager

LISE STEC  
Head Draper

BETH UBER  
Draper

ROBERT KUHN  
RUTHANNE SWANSON  
First Hands

SHANA HALL  
YAS MAPLE  
Stitchers

MELISSA BOCHAT  
Crafts Supervisor

MEREDITH MILLER  
YONIT OLSHAN  
Crafts Artisans

JESSICA DOAN  
Costume Apprentice

JESS KENYON  
MATTHEW POWELL  
Wardrobe Dressers

ELIJAH BORMANN  
Costume Shop Intern

ANNE STEBBINS  
Crafts Intern

**ELECTRICS**

KRISTOF LEOPOLD  
Lighting Supervisor

GREG HOFMANN  
Assistant Lighting Designer

JOAN E. CLAUSSEN  
House Electrician

ANDREW IVERSON  
ELIZABETH G. SMITH  
Follow Spot Operators

ERIK S. BARRY  
ERIC BRANSON  
NICK CARROLL  
ANDREW IVERSON  
JIMMY LIS  
NICOLE MAMQUIST  
TRISTAN MEREDITH  
KAE NOSBISCH  
ELIZABETH G. SMITH  
SAMANTHA TREIBLE  
Electricians

MARCELLA BARBEAU  
Lighting Intern

**SOUND**

JAMES SAVAGE  
Sound Master

RAY NARDELLI  
Associate Sound Designer

CRISTY TROIA  
Sound Engineer

PAUL PERRY  
Audio 2

DANIEL CARLYON  
JACK HAWKINS  
PALMER JANKENS  
Sound Crew

ETHAN DEPPE  
RYAN T. NELSON  
Keyboard Programmers

GROVER HOLLWAY  
DANIEL JAMA  
Sound Interns

**WIGS AND MAKE-UP**

MELISSA VEAL  
Head of Wigs and  
Make-up

WHITNEY MUELLER  
Wig and Make-up  
Apprentice

KATIE CORDTS  
CHANTELLE MARIE  
JOHNSON  
Wig Knotters

KATIE CORDTS  
Wig Attendant

BECKY CURL  
SARAH JO WHITE  
Wig and Make-up Interns

**PROPERTIES**

CHELSEA MEYERS  
Properties Master

CASSANDRA WESTOVER  
Assistant Properties Master

CHELSEA WARREN  
Dragon Puppet Designer

LACY KATHERINE  
CAMPBELL  
Assistant Dragon  
Puppet Designer

DAN NURCZYK  
Properties Stage Crew

WESLEY SCHILLING  
TARA SMITH  
Properties Artisans

DYLAN JOST  
Properties Carpenter

COURTNEY O'NEIL  
Properties Painter

CASSIE GORNIOWICZ  
Properties Stitcher

CHLOE CAPPUCCILI  
WESLEY SCHILLING  
Dragon Puppet Artisans

WOOJIN JOY CHUNG  
Properties Intern

**CONSULTANTS AND SPECIAL SERVICES**

BAKER TILLY VIRCHOW  
KRAUSE, LLP  
Auditor

CAMPBELL AND COMPANY  
Fundraising Consultant

ARC WORLDWIDE,  
A LEO BURNETT COMPANY  
Marketing Partner

MEDICAL PROGRAM FOR  
PERFORMING ARTISTS/  
PANJAPORN (PAM)  
SUPANWANID-HENRICH, M.D.  
Medical Services

AON PRIVATE RISK  
MANAGEMENT,  
STEVEN HEIN  
Insurance Services

HUGHES SOCOL PIERS  
RESNICK & DYM, LTD.  
Legal Services

REGINA BUCCOLA, Ph.D.  
Scholar-in-residence

STEPHEN BENNETT, Ph.D.  
BEATRICE BOSCO, Ph.D.  
ELIZABETH CHARLEBOIS, Ph.D.  
BRETT FOSTER, Ph.D.  
PETER KANELOS, Ph.D.  
IRA MURFIN, MFA  
Guest Lecturers

PETER BOSY  
MICHAEL BROSILOW  
BILL BURLINGHAM  
LIZ LAUREN  
MICHAEL LITCHFIELD  
JAMES STEINKAMP  
Photographers

HMS MEDIA, INC.  
Video Production

CATHY TAYLOR  
Public Relations  
Consultant

MELISSA GUTRIDGE,  
VOICES FOR  
THE ARTS, INC.  
Sales and Fundraising  
Consultant

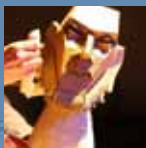
UP AND COMING



SEPTEMBER 24–NOVEMBER 10, 2013

## CYRANO DE BERGERAC

by Edmond Rostand • translated and adapted for the stage by Anthony Burgess • directed by Penny Metropulos in CST's Courtyard Theater



OCTOBER 16–27, 2013

From the United Kingdom—Blind Summit Theatre

## THE TABLE

created by Blind Summit Theatre  
Upstairs at Chicago Shakespeare



DECEMBER 3, 2013–JANUARY 19, 2014

## THE MERRY WIVES OF WINDSOR

by William Shakespeare • directed by Barbara Gaines in CST's Courtyard Theater



FEBRUARY 6–MARCH 23, 2014

## GYPSY A MUSICAL FABLE

book by Arthur Laurents • music by Jule Styne  
lyrics by Stephen Sondheim • directed by Gary Griffin in CST's Courtyard Theater



SATURDAYS AT 11:00 A.M.

FEBRUARY 22–MARCH 22, 2014

## SHORT SHAKESPEARE!

## A MIDSUMMER NIGHT'S DREAM

directed and adapted by David H. Bell  
in CST's Courtyard Theater



MARCH 13–MAY 4, 2014

## ROAD SHOW

music and lyrics by Stephen Sondheim  
book by John Weidman • directed by Gary Griffin  
Upstairs at Chicago Shakespeare



MARCH 30–APRIL 13, 2014

From Cornwall, England—Kneehigh

## TRISTAN & YSEULT

written by Anna Maria Murphy and Carl Grose  
in CST's Courtyard Theater



APRIL 29–JUNE 15, 2014

## HENRY V

by William Shakespeare  
directed by Christopher Luscombe  
in CST's Courtyard Theater

chicago  
shakespeare  
on navy pier theater

312.595.5600  
www.chicagoshakes.com

photos by Michael Breslow, Bill Burlington, Michael Litchfield, Peter Bosy, Lea Ebright, Liz Lauren and Dan Rest



## BRING SHAKESPEARE TO YOUR BACKYARD

As Chicago's home for Shakespeare, CST is committed to bringing to life the works of one of the world's greatest playwrights in the English language. Chicago Shakespeare in the Parks expands our reach beyond Navy Pier—sharing free professional productions with the diverse neighborhoods of Chicago from Humboldt Park to South Shore and Austin to Loyola Park. The success of this initiative's launch last year served to activate Chicago's Cultural Plan—ensuring that the arts are accessible to everyone. Support from individuals like you brought live Shakespeare to over 10,000 audience members. Help us continue this new citywide tradition by making a fully tax-deductible gift today.

### 3 EASY WAYS TO MAKE YOUR GIFT



[www.chicagoshakes.com/support](http://www.chicagoshakes.com/support)



312.667.4952



**Chicago Shakespeare Theater**  
800 East Grand on Navy Pier  
Chicago, IL 60611



photos by Michael Litchfield

[www.chicagoshakes.com/parks](http://www.chicagoshakes.com/parks)

# Community Partners

Chicago Shakespeare Theater is honored by the support of these leading business and civic partners, whose generosity demonstrates a commitment to enriching our vibrant Chicago community. We are pleased to recognize these organizations for their dedication to artistic excellence, innovative approaches to enhancing education and impactful community outreach initiatives.

*Reflects contributions received between July 1, 2012 and June 1, 2013*

## **GUARANTORS**

**\$100,000 & above**

American Airlines  
Arc Worldwide  
BMO Harris Bank  
Boeing  
ComEd  
The Davee Foundation  
Hyatt Hotels Corporation  
JPMorgan Chase & Co.  
The John D. and Catherine T. MacArthur Foundation  
Robert R. McCormick Foundation

## **BENEFACTORS**

**\$50,000–\$99,999**

Allscripts  
Allstate Insurance Company  
A. N. and Pearl G. Barnett Foundation  
BlueCross BlueShield of Illinois  
The Chicago Community Trust  
Exelon  
Food For Thought Catering  
Julius Frankel Foundation  
ITW  
KPMG LLP  
Madison Dearborn Partners  
Motorola Mobility Foundation  
National Endowment for the Arts  
Northern Trust  
Polk Bros. Foundation  
The Shubert Foundation  
The Harold and Mimi Steinberg Charitable Trust

## **SUSTAINERS**

**\$25,000–\$49,999**

Paul M. Angell Family Foundation  
Bartlit Beck Herman Palenchar & Scott LLP  
Helen Brach Foundation  
The Brinson Foundation  
Bulley & Andrews  
Chicago Shakespeare Theater Fund at  
The Chicago Community Trust  
The Crown Family  
Lloyd A. Fry Foundation  
General Dynamics Corporation  
Grosvenor Capital Management, L.P.  
Hillshire Brands  
Illinois Arts Council  
Jenner & Block LLP  
Jones Lang LaSalle Inc.  
Kirkland & Ellis LLP  
McDonald's Corporation



**\$25,000–\$49,999**

(continued)

Nuveen Investments  
The Pauls Foundation  
Strategic Hotels and Resorts  
The Sun-Times Foundation/The Chicago Community Trust  
Anonymous

**\$15,000–\$24,999**

Baxter Healthcare Corporation  
Chicago Title and Trust Company Foundation  
Clark Hill PLC  
The Field Foundation of Illinois  
The Grover Hermann Foundation  
PNC  
Shure Incorporated  
Anonymous

**\$10,000–\$14,999**

Abbott  
Aon  
CME Group  
Elizabeth F. Cheney Foundation  
Goldman, Sachs & Company  
John R. Halligan Charitable Fund  
Harris Family Foundation  
The Irving Harris Foundation  
Mazza Foundation  
Mid Atlantic Arts Foundation  
Motorola Solutions, Inc.  
ReedSmith LLP  
The Rhoades Foundation  
Skadden, Arps, Slate, Meagher & Flom LLP  
Stefani's Children's Foundation  
TCG/Global Connections—IN the LAB  
Tur Partners LLC  
Ventas  
Walgreens

**\$5,000–\$9,999**

Butler Family Foundation  
CDW  
Delaware Place Bank  
Dr. Scholl Foundation  
The James Huntington Foundation  
Newcastle Limited  
NIB Foundation  
Peoples Gas  
Daniel F. and Ada L. Rice Foundation  
Charles and M. R. Shapiro Foundation, Inc.  
The Siragusa Foundation  
William Blair & Company  
Anonymous

**\$1,000–\$4,999**

Baker Tilly Virchow Krause, LLP  
The Ann Barzel/Patrick Henry Arts Fund  
BBJ Linen  
Blum-Kovler Foundation  
Broco Partnership  
City of Chicago Department of Cultural Affairs and Special Events  
The Hattie A. and Marie V. Fatz Foundation  
Hive Chicago, through the Chicago Community Trust  
The National Alliance of Musical Theatre's  
National Fund for New Musicals  
Anonymous

# Shakespeare Society

Members of the Shakespeare Society provide vital annual support to sustain Chicago Shakespeare Theater's mission. The commitment of these steadfast individuals helped to build a home for Shakespeare in Chicago that has endured for the past quarter-century. We are deeply grateful for their extraordinary investment in the Theater's guiding principles to serve as a cultural leader, citizen and ambassador for our city.

*Reflects contributions received between July 1, 2012 and May 30, 2013*

## **\$100,000 & above**

Best Portion Foundation  
Eric's Tazmanian Angel Fund  
Lew and Susan Manilow  
Raymond and Judy McCaskey  
Burton X. and Sheli Z. Rosenberg  
Donna Van Eekeren Foundation

## **\$50,000–\$99,999**

Joyce Chelberg  
Harve A. Ferrill  
Ellen and Paul Gignilliat  
Jan and Bill Jentes  
Sheila Penrose and Ernie Mahaffey  
Peter and Alicia Pond  
Richard W. Porter and Lydia S. Marti  
John W. and Jeanne M. Rowe  
Barbara and Barre Seid Foundation  
Carl and Marilyn Thoma  
Anonymous (2)

## **\$25,000–\$49,999**

Julie and Roger Baskes  
Duane and Susan Burnham  
Doris Conant  
John and Jeanne Ettelson  
Sonja and Conrad Fischer  
Barbara and Richard Franke  
Christa and Greg Gallopoulos  
Virginia and Gary Gerst  
John and Judy Keller  
Anstiss and Ronald Krueck  
Anna and Robert Livingston  
Malott Family Foundation  
Mr. and Mrs. Richard C. Notebaert  
Mark Ouweleen and Sarah Harding  
Merle Reskin  
Glenn Richter  
Carole and Gordon Segal, Segal Family Foundation  
Gayle and Glenn R. Tilles  
Pam and Doug Walter  
Anonymous (2)



# Individual Contributors

Thanks to the contributions of CST's family of donors, we can continue to delight audiences in Chicago and around the world through our trademark approach to theater that is inspired by the spirit of Shakespeare. Annual donations offset the substantial expense of producing theater of uncompromising quality and ambition. In recognition of the enhanced level of support provided by our Bard Circle donors of \$1,000 or more, CST provides exclusive privileges and behind-the-scenes access.

*Reflects contributions received between July 1, 2012 and May 30, 2013*

## BARD CIRCLE AMBASSADORS

### \$10,000-\$24,999

Ada and Whitney Addington  
Mr. and Mrs.

Nicholas C. Babson  
Frank and Kathy Ballantine  
Cynthia and Alan Berkshire  
George W. Blossom III\*  
Mr. and Mrs. Allan E. Bulley III  
Nellie and Sheldon Fink  
Jim and Karen Frank

Mimi & Bud Frankel  
Richard and Mary L. Gray  
James and Brenda Grusecki  
Hill and Cheryl Hammock  
Caryn and King Harris  
David Hiller  
Ken Hitz  
The Jaquith Family Foundation  
Mr. and Mrs. Richard A. Kent  
Anne E. Kutak  
Chase and Mark Levey

Jane and Richard Lipton  
Lew and Susan Manilow  
Helen Marlborough  
and Harry Roper  
Bob and Becky McLennan  
Edward and Lucy R.  
Minor Foundation  
Barbara Molotsky  
Harold H. Plaut\*  
Sal and Nazneen Razi  
Mark and Allyson Rose

Mr. and Mrs. Patrick G. Ryan  
Rose L. Shure  
Mr. and Mrs.  
Gregory D. Smith  
Harvey and Mary Struthers  
Mr. and Mrs.  
William J. Tomazin, Jr.  
David and Bridget  
Van Eekeren  
Joan and Jack Wing  
Anonymous (2)

## BARD CIRCLE FELLOWS

### \$5,000-\$9,999

Edward H. Andrews III  
Mr. and Mrs. Brit J. Bartter  
Janice & Philip Beck  
Jim Blake and Kelly Morgan  
Kate Blomgren  
The Robert Thomas  
Bobins Foundation  
Barbara and Jim Bronner Fund  
of the Yampa Valley Community Foundation  
Thomas L. and  
Cairy S. Brown  
Frank and Jan Cicero  
Patrick Richard Daley  
Robert Dohmen  
Brian W. Duwe  
J. Friedman  
Barbara Gaines

Joan J. Golder  
Joan M. Hall  
Kathryn Hayley and  
Mark Ketelsen  
Criss Henderson  
Stewart Hudnut and  
Vivian Leith  
Fruman, Marian and  
Lisa Jacobson  
Reinhardt H. and Shirley R.  
Jahn Foundation  
Mr. and Mrs. Richard Kiphart  
Jan and Craig Mahlstedt  
Maura Ann McBreen  
Renetta and Kevin McCann  
Margaret and  
Steven McCormick  
Alfred McDougal and  
Nancy Lauter McDougal  
Charitable Fund

Douglas McLemore and Judith  
Rittenhouse  
Ellie and Bob Meyers  
Mr. and Mrs. James F. Miller  
Mike and Adele Murphy  
Madhavan and Teresa Nayar  
Dr. Martha Nussbaum  
Irma Parker  
Mr. and Mrs.  
Charles R. Patten, Jr.  
J.B. & M.K. Pritzker Family  
Foundation  
John and Betsey Puth  
Carlisle and John Rex-Waller  
Ann and Robert Ronus  
Richard and  
Donna Rosenberg  
Dr. and Mrs. James  
Scheffler, M.D.

The Schreuder Family  
Earl and Brenda Shapiro  
Foundation  
Robin L. and  
Timothy D. Sheehan  
Chuck Simanek and  
Edna Burke  
Dick Simpson  
The Solomon Family  
Eric Q. Strickland  
Sheila G. Talton  
Mr. and Mrs.  
Richard L. Thomas  
Howard J. Trienens  
Vic and Bonnie Vickrey,  
VOA Associates Inc.  
Dan and Patty Walsh  
Lynne and David B. Weinberg  
Ronald and Geri Yonover  
Anonymous

## BARD CIRCLE PATRONS

### \$2,500-\$4,999

James L. Alexander  
and Curtis Drayer  
Tom and Sarah Anderson  
Edgar H. Bachrach  
Trish and Bob Barr  
Mr. and Mrs. John W. Barriger  
John and Margie Bennecke  
Stephen C. and  
Patricia B. Carlson  
Richard & Ann Carr  
Mark and Connie Crane  
Keith S. Crow and  
Elizabeth Parker Crow  
Judy and Tapas K. Das Gupta  
Philip and Marsha Dowd

Theodore Eckert Foundation  
John Edelman  
Mr. and Mrs. Philip L. Engel  
Marie and Michael Evans  
Michael Fain and  
Judith Barnard  
Ethel and Bill Gofen  
Honey Lynn Goldberg  
Sue and Melvin Gray  
Elizabeth Gregory  
and Michael Serritella  
Ann and Doug Grissom  
Julie and Parker Hall  
Gene and Nancy Haller  
Frederick and Vallie Henry

Doris B. Holleb  
James and Mary Houston  
Dick and Lou Hurckes  
Terrell and Jill Isselhard  
Seth and Trudy Jacobson  
Kirk and Cheryl Jaglinski  
Andrew M. Johnstone  
and Lydia E. Wahlke  
Greg and Carol Josefowicz  
Judith L. Kaufman  
Martin and Rosann Kelly  
Klaff Family Foundation  
Sanfred and Nancy Koltun  
Dr. John G. Lease  
Jim and Kay Mabie  
Mr. John F. McCartney

Swati and Siddharth Mehta  
Mrs. Alberding Mohr\*  
Kate and William Morrison  
Catherine Mouly and  
LeRoy T. Carlson, Jr.  
Dennis and Linda Myers  
Bobbi Newman  
Dennis Olis  
Oscar and Linda Orellana  
Cynthia Plevin  
Laurie and Scott Rose  
Bruce Sagan and Bette Cerf Hill  
John M. Savko  
Judy and David Schiffman  
Bonnie and Roger Schmidt  
The Schroeder Foundation

\*deceased

# BARD CIRCLE MEMBERSHIP

is your ticket to the ultimate  
Chicago Shakespeare Theater  
experience!

**BARD  
CIRCLE  
CHALLENGE**  
Join today and have  
your gift matched  
dollar-for-dollar!  
All new gifts matched  
up to \$100,000.

Your Bard Circle Membership provides  
you with VIP ticketing and intermission  
service, as well as intimate events with  
the world's leading theater artists.

By making a leadership gift of \$1,000  
or more, you can directly support the  
extraordinary productions on our stages  
and work throughout the community.

To join the Bard Circle today, please contact:  
**Christopher Pazdernik at 312.667.4949**  
or [cpazdernik@chicagoshakes.com](mailto:cpazdernik@chicagoshakes.com)

Barbara and Joe Sedelmaier  
Brian and Melissa Sherman  
Michael and Linda Simon  
Michael and Sharon Sloan  
Mr. and Mrs. Harrison I. Stearns  
Walter Stearns  
Donna M. and  
Thomas H. Stone  
Richard and Elaine Tinberg  
Anne and William Tobey  
Tom and Teri Tracey

Cate and Frederick Waddell  
Charles Wert  
David and Linda Wesselink  
Brian and Sheila Whalen  
Mark Ferguson  
and Elizabeth Yntema  
Ava Youngblood  
and Haj Gueye  
Ann Ziegler  
Anonymous (2)

## BARD CIRCLE PARTNERS

**\$1,000–\$2,499**

Jean Allard  
Doris A. Alvarado  
Mr. and Mrs.  
John H. Andersen  
Robert C. Anderson  
Dalia and Jurgis Anyas  
Peter and Lucy Ascoli  
Helen Ashley  
Carey and Brett August  
Pamela Baker and  
Jay R. Franke  
Edward Banas  
Ronald Bauer Design Inc.  
Mr. and Mrs. James Bay  
Rick and Deann Bayless  
Richard and Heather Black  
Steven and Susan Bloch  
Mr. and Mrs. Andrew K. Block  
Charles and  
Mary Anne Bobrinsky  
Nancy and George Bodeen  
Drs. Gregory Boshart and  
William Lawrence  
Stephen and Jacquelynn Bossu  
Rachel Bronson &  
John Matthews  
Douglas R. Brown  
Suzanne and John Brubaker  
Mr. and Mrs. John H. Bryan  
Robert J. Buford  
Catherine G. Burnham  
Jan Burnham and Ray Carney  
Brian Burrows and  
Penny Kahan  
Susanne Bush-Wilcox  
Butler Family Foundation  
Mildred L. Calhoun and  
Joseph U. Schorer  
Marion A. Cameron  
Michael L. Cardinale and  
Autumn L. Mathier  
David and Orit Carpenter  
Dr. and Mrs. Robert W. Carton  
Robert A. and Iris J. Center  
Stanley D. Christianson  
Rev. Jane A. and  
Mr. Michael A. Clark  
Barney I. Cohen  
Steven Cohen and  
Michael Godnick  
Jane and John Colman  
The Colmar Foundation  
Karen Butler Connell  
and Hugh T. Connell  
J. Gorman Cook  
Lawrence Corry  
Mr. and Mrs. William A. Crane  
Michael F. Csar  
Carl Cucco  
Charles Custer  
Kent and Liz Dauten  
Wendy and Jim Daverman

John Davidson  
and Shirley Schaeffer  
Dirk Denison and David Salkin  
William DeWoskin  
and Wendy S. Gross  
Mr. and Mrs. Byram Dicks  
Leigh Diffay and  
Mary Ann Angle  
Luke Dixon  
David and Eileen  
Donnersberger  
Carole and Peter Doris  
Joan G. Downing  
Ingrid and Rich Dubberke  
John Duncan and Anita Sarafa  
Drs. George Dunea  
and Sally Dunea  
Kathy Dunn  
Phil and Phyllis Eaton  
Ms. Kinzie Ecker and  
Mr. Douglass Ferrell  
Karen and Boris Elisman  
Donald and Deanna Elliott  
Deborah and S. Cody Engle  
Sue S. Ettelson  
S.M. Evans  
Patti Eylar and Charlie Gardner  
Mr. and Mrs. Fatheazam  
James and Joan Fencil  
Mr. and Mrs. Steven D. Fifield  
Hope Flack  
Henry and Frances Fogel  
Foley Family Foundation  
Rhoda and Henry S. Frank  
Willard and Anne Fraumann  
Patricia and Martin Freeman  
Kim and Greg Frezados  
Nancy and Bill Fry  
Jack Fuller and  
Debra Moskovits  
Paula and Michael Furst  
Edith B. Gaines  
J. Patrick and  
Anne M. Gallagher  
Mr. and Mrs. Robert J. Gareis  
Stephen and Elizabeth Geer  
Suzanne and Frank Gerlits  
John F. Gilmore  
Mr. and Mrs. James J. Glasser  
Judith Goldberg  
Isaac and Jennifer Goldman  
Jim Goodridge and Joan Riley  
William and Patricia Graham  
Linda D. and  
Craig C. Grannon  
James and Brenda Grusecki  
Harsha and Susan Gurujal  
Mary Hafertepe  
Daniel W. Hamilton and  
Mary Ann Winkelmess  
Robert Hanlon and  
Barbara MacDowall  
Al and Chris Hanna

Kathy Harrington and  
Charlie Moles  
Rhonda and Richard Harsch  
Mr. and Mrs. Patrick Haynes  
Mr. and Mrs.

Thomas C. Heagy  
Pati and O.J. Heestand  
John and Yvonne Held  
Janet and Bob Helman  
Robert and Konstanze Hickey  
Gail and Tom Hodges  
Bill and Vicki Hood  
Jim and Deborah Hopkinson  
Nancy M. Hotchkiss  
Joseph H. Huebner  
Patricia J. Hurley  
Leland Hutchinson  
and Jean Perkins  
Mr. Paul A. Hybel &

Mrs. Elizabeth A. Raymond  
Deborah and Helmut Jahn  
Pam and Paul James  
Claudia and Rick Johnson  
Kathryn and Bruce Johnson  
Russell N. Johnson  
Gretchen and Jay Jordan  
John Joyce and Gina Sepe  
Ms. Susan M. Junkroski  
Mr. and Mrs. Gabriel Kain  
Jerry and Judy Kaufman  
Jen and Brad Keck  
Mr. and Mrs. Michael Keiser  
Diane and Gaynor Kelley  
Dr. and Mrs. Russell  
and Rowena Killion  
Niamh King

Mr. and Mrs. Richard M. Kohn  
The Koldyke Family Fund  
Jack and Catherine Kozik  
James and Carolyn Krause  
T/S Kully Philanthropic Fund  
Patrick R. Lagges  
Susan and Richard Lenny  
Joanie and Richard Leopold  
Barry Levenstam  
and Elizabeth Landes  
Benita Levy  
Mrs. Carole F. Liebson  
and Dr. Philip R. Liebson  
Robert B. Lifton  
and Carol Rosofsky  
Michael Charles Litt  
Diane and Bill Lloyd  
John H. Long and  
Nona Harrison Long

Michael and Karyn Lutz  
Family Foundation  
Martha and John Mabie  
Charlene and  
Gary MacDougal  
Barry and Mary Ann MacLean  
Sherry and John Malusa  
Lisa Runnells Markham  
Richard and Anna Marks  
Faye Marlowe  
William Mason  
and Diana Davis  
Judy and John McCarter  
Michael McCaslin  
and Patrick Ashley  
Ron and Linda McGimpsey  
The Howard and Kennon  
McKee Charitable Fund  
Helen Melchior

Mr. and Mrs. Gregory Melchor  
Pamela G. Meyer  
Sandra and Bernie Meyer  
Mr. and Mrs. Paul J. Miller  
Mr. and Mrs. Henry C. Mills  
George and Susan Mitchell  
Dr. Marilyn Mitchell  
Linda Johnson Rice  
John R. and Judith R. Moore  
David Mordini and  
Jerome Fitzgerald  
Patricia and David Mosena  
Michael M. Mullen  
Bill Mulliken and Lorna  
Filippini-Mulliken  
Clare Muñana  
Peter F. Nabicht and Family  
Howard and  
Sandra Nagelberg  
Judith E. Neisser  
Hope G. Nightingale  
and David Ellis  
John and Janis Notz  
Mr. and Mrs.  
Bernard Nusinow  
James F. Oates  
Bill and Penny Obenshain  
Mr. and Mrs. Lee Oberlander  
Mr. and Mrs.  
James J. O'Connor  
Sarah and Wallace Oliver  
Jonathan F. Orser  
Dr. John O'Toole and  
Dr. Kristin Walter  
Mr. and Mrs. Bruce Ottley  
George and Peggy Pandaleon

Robert K. Parsons  
and Victoria J. Herget  
Lanny and Terry Passaro  
Connie and Don Patterson  
Wendy J. Paulson  
Thomas Pawlik and Ava Cohn  
Mona Penner  
Theodore and  
Harriette Perlman  
Sandra Perlow  
Joseph G. Phelps  
Kathleen Picken  
Mr. and Mrs.  
James W. Pierpont  
Paulita Pike and  
Zulfiqar Bokhari  
Steven Plevin  
The Charles B.  
Preacher Foundation  
Judith Pree

Andra and Irwin Press  
C. James and Karen Prieur  
David and Valeria Pruett  
Wendy and Jeffrey Puglielli  
Steve and Holly Quasny  
Lynne and Allan Reich  
Linda Johnson Rice  
Mary Kay Ring  
William and Louise Robb  
The Roberts Family  
Foundation  
Robin Roberts  
William C. Roberts, Jr.  
Bruce and Ellen Rodman  
Edmund and Carol Ronan  
Barbara and Ed Roob  
Tom and Denise Rosenfeld  
Deborah and Jeffrey S. Ross  
Abbie Helene Roth and  
Sandra Gladstone Roth  
The Roth Charitable Trust  
Joseph O. Rubinelli, Jr.  
Dirk Brom and Kim Russel  
Angelique A. Sallas  
Bettylu and Paul Saltzman  
Larry Salustro  
John Duncan and Anita Sarafa  
Claudia Marie Saran  
April and Jim Schink  
Karen and Frank Schneider  
Patricia and David Schulte  
Judy and Thomas Scorza  
Maryellen and Tom Scott  
Mr. and Mrs. Richard Seid  
Emanuel Semerad

Carol Senderowitz  
Dr. Ken Shanoff  
Kenneth Sharigian  
Andrew Shaw and  
Marty Peterson  
John and Kay Shaw  
Jack Siegel and Evelyn Brody  
Mr. and Mrs.

Michael J. Silverstein  
Larry and Victoria Smith  
Kathleen and Brian Spear  
Deborah Spertus  
Howard Stamer  
Julia Stasch  
Cheryl Steiger and  
Kevin Noonan  
Nikki and Fred Stein  
The Stanley & Kristin  
Stevens Family Fund  
Liz Stiffel  
Mr. Gary D. Strandlund  
Susan and John Sullivan  
Eileen Sweeney  
Kimberly K. Taylor  
The Tengelsen Family  
Foundation  
Mr. Gilbert Terlicher  
Imogene Thoma  
Mrs. Vernon B. Thomas  
John and Maribeth Totten  
Joanne Troutner  
Henry and Janet Underwood  
Gretchen V. Vacendak  
Mr. and Mrs. Todd Vieregg  
Mr. and Mrs. Clark L. Wagner  
Mary Kay and Bill Walsh  
E. Brooke and Greg Walters  
Sarita Warshawsky  
Bill and Frona Weaver  
Susan Weber  
Richard and Diane Weinberg  
Wayne Whalen  
and Paula Wolff  
Mrs. Henry P. Wheeler  
Lisa and Randy White  
Stuart and Diana Widman  
Suzanne and  
Robert Wieseneck  
Sheila Wolfe  
Steve and Arna Yastrow  
Paul and Mary Yovovich  
Donna Zarcone  
William Ziemann  
Dr. William R. Zimmer  
Anonymous (9)

## COLLEAGUES

### \$500-\$999

Jonathan Abarbanel  
Mr. and Mrs. William Adams IV  
Karen and Walter Alexander  
Dominic and Kathryn Allocco  
Robert W. Andersen and  
George P. Schneider  
Carol L. Anderson  
Pamela C. Atkinson  
Richard K. Baer, M.D.  
Michael and Mary Baniak  
Bonnie A. Barber

Sandra Bass  
Ellen Stone Belic  
and Jerone Stone  
Joan Israel Berger  
Leigh and Henry Bienen  
Daniel and Mary Boote  
Joan and William J. Brodsky  
John A. Bross  
Edward and Sandra Burkhardt  
Pastora San Juan Cafferty\*  
David L. Cameron  
Stephen and Adra Campbell

Ed Caveney and  
Courtney Thomas  
Larry and Julie Chandler  
Thomas Clancy  
and Dana Green  
Timothy and Theresa Coburn  
Brittney Corley  
Ms. Nancy Raymond Corral  
The Coudal Family  
Crown Point  
Community Theatre  
James Currie  
Patrick and Shirley Daly

Oscar O. and Paula D'Angelo  
Sue and Kent Davis  
Lisette and Richard Davison  
Mr. Paul Dengel and  
Ms. Paula J. Morency  
Marilyn and Terry Diamond  
Wendy Doniger  
Mr. and Mrs. Michael  
Doomweerd  
Dr. and Mrs. James L. Downey  
Susan Duda  
Bruce and Marnie Duff

## INDIVIDUAL CONTRIBUTORS

Barbara and John Eckel  
Paul and Linda Edwards  
Melanie Ehrhart  
Salli H. Eley  
Jeff Farbmam  
and Ann Greenstein  
Polly Fehlman  
Judy and Terry Feiertag  
Peter Fischer  
and Joanne Roddy Fischer  
Lois Farrell Fisher  
John & Patti Flanagan  
Gillian Flynn  
Steph and Tom Formolo  
Adrian Foster  
Dan Freitag  
Mark and Susanne Frey  
Mr. and Mrs. Abel Friedman  
Sharon and Richard Fritz  
Tod Galloway  
Charles Gately and  
Barbara Marder-Gately  
Joyce and Allen Gerstein  
Jack and Jeanne Gilbert  
Ms. Carol Glassroth  
William and Anne Goldstein  
Steve and Debbie Hallsey  
Jill Hartman  
Lois and Marty Hauselman  
Kristen Hayes  
Anne and James Heger  
Mr. and Mrs. Chris Hehmeyer  
Diane Henry  
Donald E. Hilton  
Arnold and Sherry Hirsch  
Arthur and Nancy Hirsch  
Paul and Jana Hletko  
Adam and Denise Hoeflich  
Brian Horwood and  
Mary Beth Berkoff  
Karen and Tom Howell  
James Shaeffer  
and Lynn Hughitt  
Cecily Hunt  
Robert T. Isham, Jr.  
John Jendras and Judith Paice  
Reena and Sajiv John

Drs. Michael and  
Abhilasha Jones  
JS Charitable Trust  
Bruce T. Kaiser  
Robert and Jeanne Kapoun  
Harriet and Ernest Karmin  
Larry and Marie Kaufman  
Ms. Emily Kessler  
Krystyna Kiel and  
Alexander Templeton  
Frank and Katherine Kinney  
Polly Elizabeth Kintzel  
Susan Klingenstein Fund  
Cheryl and Don Kobetsky  
The Kochanek Family  
Stephen Kocian  
Mr. Murray Kopelow and  
Ms. Catherine R. Bachman  
Kevin A. and  
Joanne C. Krakora  
Bob Kunio and Libby Roth  
Mark Landolt and Jennifer  
Lane Lansolt  
Mr. and Mrs. Ted Langan  
Kim and Edwin Lewis  
Anny Liao  
Gloria and Harold Lipschultz  
Valerie Kolis and Peter Livaditis  
Mr. David P. Lloyd and  
Ms. Suzanne Williams  
Nancy and Jim Loewenberg  
Jim and SuAnne Lopata  
Michael and Lisa LoVallo  
Mr. Sachnoff E. Lowell  
Paula and Jeffrey Malak  
Mr. and Mrs. Kurt Mancillas  
David Marino  
Steve and Lynn Mattson  
Ted and Almeda Maynard  
McMillan and Associates  
Terry J. Medhurst  
Withrow W. Meeker  
Judith McGuire  
Patti Mehler  
Mr. and Mrs. John Merritt  
Daniel Meyer  
Jane Meyer  
Tim Michel and Amy Lakin

Dana M. Mikstay  
Michelle Montroy  
Charles and Joan Moore  
Rick and Joyce Morimoto  
Michelle and Michael Morris  
Mr. and Mrs.  
Robert S. Morrison  
Milan and Shannon Mrksich  
Gerald and Maia Mullin  
Dr. Virginia Mullin  
Eileen M. Murray  
Dr. Gerard F. Notario  
John and Pat O'Brien  
Barbara and Daniel O'Keefe  
Mr. and Mrs. Norman Olson, Jr.  
Ashley Peace  
Richard and Charlene Posner  
Dr. and Mrs. Richard A. Prinz  
Mr. and Mrs. John Raitt  
Polly and Kenneth Rattner  
Dr. David and Lee Reese  
Drs. Mark Reiter  
and Kathleen Ward  
Mr. and Mrs.  
John M. Richman  
Dr. and Mrs. Ralph W. Richter, Jr.  
Charles Rickett Jr.  
Cil and Deeever Rockwell  
Joseph Ross and Jean Shuter  
Heidi S. Rothenberg  
Janet and Philip Rotner  
Dr. Marsha Ryan  
Alyne Salstone  
Richard and Susan Sanders  
Susan Schaalman  
and Charlie Shulkin  
Jeffery Schamis and Eva Eves  
Heidi Schellman  
and Stephen Wolbers  
Jerry and Naomi Senses  
Susan H. and  
Robert E. Shapiro  
Mr. and Mrs. Charles Shea  
Linda S. Siegel  
Duane Sigelko and  
Mary Kay McDermott  
Craig Sirls  
Carrie and John Smart  
Diane Smith

Leslie Smith and Michael Uzer  
Mike, Charlotte and Ted Smith  
Adam Snyder  
Unmi Song  
Joan Sorensen  
Patricia G. Spear  
David and Ingrid Stallé  
Ronna Stamm  
and Paul Lehman  
Mr. Roger Stein and  
Ms. Jill Deutsch  
Mrs. Carol D. Sterling  
Nancy and Bruce Stevens  
Suzanne and Fred Stitt  
Susan and Roger Stone  
Mary Stowell and Jim Strecker  
Gary D. Strandlund  
Caryn and Larry Straus  
Robert and Ann Stucker  
Sara E. Sumner  
Jerry Szatan and  
Katherine Abbott  
Harrison and Marilyn Tempest  
Wade Thomson  
Steve Turner & Ann Cuniff  
Brady Twiggs  
Mr. and Mrs. Peter Van Nice  
Anne VanWart & Michael Keable  
Linda Vertrees  
Mrs. Susan Wade on behalf  
of the Dr. Robert H. Fischer  
Memorial Fund  
Roberta and Robert Washlow  
Chloe and Angus Watson  
Richard and Karen Weiland  
Dr. Joan Werber  
William and Elizabeth Werth  
Connie and John Wesley  
Carol Williams  
Gary and Modena Wilson  
Duain Wolfe  
Susan and Michael Wolz  
Harold Woodman  
Mr. and Mrs.  
Michael Woolever  
Debbie Wright  
Peter A. Zadeik, Jr.  
Anonymous (8)

## FRIENDS

### \$250-\$499

Abel Financial Consultants,  
Munster, IN  
Gershen and Sally Abraham  
David and Laura Abrahamson  
Ann S. Alpert  
The Altaratz Family  
James and Sheila Amend  
Kimball and Karen Anderson  
Mr. and Mrs. Brian S. Arbetter  
Jason Archibald  
Mareon R. Arnold  
Dr. Diana Ault  
Thomas & Heidi Babbo  
Sharon Baldwin  
Beth Balik  
Jane and Norman Lee Bannor

Randy and Lorraine Barba  
Mr. and Mrs.  
William G. Barker III  
Barbara Barzansky  
Gregory Batton and Carol  
Constantine  
Dr. Lisa M. Bauman  
Martin and Jill Baumgaertner  
Mr. and Mrs. Mark E. Beeghly  
Linda Finley Belan  
and Vincent Kinehan  
Mr. and Mrs.  
Donald A. Belgrad  
Kathleen Bemis  
Jeff and Allison Bennett  
Tom and Rhoda Benson  
James and Amy Benvenour

Tom and Melanie Berg  
Phyllis and Leonard Berlin  
Harriet Bernstein  
John Bernstein  
Diane and Karl Berolzheimer  
Carla and R. Stephen Berry  
Adrian D. and Arta Beverly  
Keki and Mehroo Bhote  
Sam and Shirley Bianco  
Jerry Biederman  
John, Kathy and Eric Biel  
Anonymous  
Gene Bindler  
James B. Bishop  
Patrick Bitterman  
M. J. Black  
Dr. Constance Blade

Abby Blank  
Dr. Thomas Pritchett Bleck  
Dennis and Sharon Blevit  
Elizabeth and  
David Blinderman  
Mr. and Mrs. Philip D. Block III  
David and Linda Blumberg  
Linda and Robert Bolas  
H. Constance Bonbrest  
Jeff Bonham  
Kay and Fred Bosselman  
Robert and Susan Bowker  
Betty and Bill Boyd  
Lew Brashares and Cathy Jaros  
Paul and Susan Brenner  
Richard H. Brewer  
and Mary Ann Schwartz

- Ms. Jean Broom  
 Alan and Carol Brown  
 Rev. Joyce and  
   Mr. George M. Brown  
 Linda and Terry Brown  
 Margaret Scanlan Brown  
 T. P. Brown  
 Karen Brozynski  
 Chris Bucko and Eva Wu  
 John B. Buenz  
 Howard and Moira Buhse  
 Jim and Lori Burns  
 Bill and Helen Burns  
 Dick and Ann Burnstine  
 Crystal and Thomas F. Bush  
 John Byrd  
 Ed Calkins  
 Vanessa Caparros  
 Kenneth Carlson  
   and Harriet Carlson  
 Sandra Carman  
 Constance K. Casey  
 Mary Catormy  
 Mr. S. Chapman  
 Robert and Laura Chen  
 Ms. Cynthia Cheski  
   and Rev. Scott Elliott  
 John and Deborah Chipman  
 Thomas E. Chornicz  
 Jane Christino  
   and Joseph Wolnski  
 Mr. and Mrs.  
   Jerome J. Claeys III  
 Martin and Jane Clarke  
 Mary Clausen-Beck, Robert  
   Beck, and Grace  
   & Andrew Beck  
 Peter Coblentz  
   & Maureen Mitchel  
 Emil F. Coccaro  
 Marvin R. Cohen  
   and Jane E. Richman  
 Mr. and Mrs. Edward Condon  
 Janice M. Conway  
 Kim and Vera Cory  
 Roy Cowell  
 Chrissy and William Cox  
 Philip and Judy Curley  
 Barbara Flynn Currie  
 Frank and Laura Czechanski  
 The Dale Family  
 Joanne and Thomas W. Daly  
 Marilynn B. Damall  
 Anne Megan Davis  
 Michael and Barbara Davis  
 Mr. Drury Davis  
 Robert and Sheila Day  
 Nancy Dehmlow  
 Wilma and Michael Delaney  
 Mr. and Mrs. Eugene DeMuro  
 Julian & Molly D'Esposito  
 Donald Deutsch  
 Janet E. Diehl  
 Roberta S. Dillon  
 Lawrence and Sally Domont  
 John and Barbara Dongas  
 Sue Donoghue
- Diana Drouillard  
 Bruce and Marnie Duff  
 Sheila and Harvey Dulin  
 Therese Dumond  
 Dr. Deirdre Dupré  
   and Dr. Robert Golub  
 Eldred DuSold  
 Ezra S. Eisenberg  
 Gerald and Eileen Eisenstein  
 Mary Elson  
 Erika Erich  
 Thomas and Pat Erickson  
 Drs. Ron and Judy Eshleman  
 Christine Evans  
 Suzanne Fabers-Fizdale  
   and Richard Fizdale  
 Edith and Gerald Falk  
 Chuck and Wendy Fast  
 Mr. and Mrs. John Fazi  
 Dr. Kate Feinstein  
 Carol Fessenden  
 Leslie Fineberg  
 James and Rochelle Fisch  
 Mr. and Mrs.  
   Justin M. Fishbein  
 Susan and Kevin Flynn  
 For the love of family  
   tradition—theater  
 Sherry Fox and Julie Fox  
 Timothy and Janet Fox  
 James and Silvia Franklin  
 Judith R. Freeman  
 John and Berta Friedland  
 David A. Fulghum  
 Joan A. Gall  
 Denise Michelle Gamble  
 Donald C. Gancer  
 James Gatzolis  
   and Shelley Smith  
 JoAnn Gavin and John Smyth, Jr.  
 Mr. and Mrs. Malcolm Gaynor  
 Marilyn Getzow  
 Aaron Gibson  
 Geoffrey Gifford  
 Cheryl and Robert Gilhooley  
 Susan Gilkey, MD  
 Richard A. Ginsburg  
 Gerry and Stan Glass  
 Carol and Jeffrey Glassroth  
 Paula and Samuel Golden  
 Susan L. Goldenberg  
 Gordon and Nancy Goodman  
 Michelle and Gerald Gordon  
 Philip and Suzanne Gossett  
 Tom and Claire Goulding  
 Barbara Grabowski  
 Stuart Graff  
 Anastasia Grant  
 Brian Gray and  
   Melissa Greenberg  
 John Green  
 Jack and Donna Greenberg  
 Ray H. Greenblatt  
 Dr. and Mrs. Robert Greendale  
 Stewart and Rochelle Grill  
 Robyn and David Grossberg  
 Ada Mary Gugenheim  
   and Jon N. Will
- J.A. Gustafson  
 Carol and Solomon Gutstein  
 Philip and Nancy  
   Zimmerman Hablutzel  
 Drs. David and Elaine Hacker  
 The Hackett Family  
 Frances Cole Hansen  
 Virginia M. Harding  
 Phillip and Nancy Harns  
 Thomas Harris  
 Dorothy Harza  
 Linda and Robert Hauser  
 Van and Ruth Hawkins  
 Thomas and Louise Hayden  
 Mary J. Hayes  
 Melissa A. Hazlewood  
 Sean and Nancy Heffernan  
 Virginia and Thomas Helm  
 Dr. John A. Hemdon  
 Kimberlee S. Herold  
 Catherine and John Herrmann  
 Mr. and Mrs. Mark C. Hibbard  
 Robert Hill and Thea Flaum  
 Joel and Janet Hochman  
 Aaron and Sarah Hoffman  
 Ann and Jim Hogan  
 Jackie and Jim Holland  
 Sheldon Holzman  
 Nick Hornedo  
 Vicki and Thomas Horwich  
 John and Leigh Hourihane  
 Carter Howard  
 Mr. and Mrs.  
   Stephen G. Huels  
 Professor and Mrs. Clark Hulse  
 Judy Hunnicutt  
 G.C. and Phyllis Hunt  
 John Huntington  
   and Virginia Wexman  
 Adam and Ruth Hyde  
 Dr. David Hyman  
 Mr. and Mrs. James Ibers  
 Steve Frerkaw and Laura Ikens  
 Inheriting Wisdom  
 Mr. Harold Jackson  
 Kristin Jacobsen  
 Joseph and Ginia Jahrke  
 Charles and Jeanne Jardine  
 Rolfe B. Jenkins  
 Edward T. Jeske  
   and John F. Hern  
 Karen and Dan Johns  
 Randee and Vance Johnson  
 James A. Jolley  
   and R. Kyle Lammlein  
 Mr. Lawrence L. Jones  
 Lynn and George Jones  
 Eric Jordahl  
 Laura Jordahl  
 Edward T. Joyce  
 Dr. Anne M. Juhasz  
 Ms. Judith Jump  
 Mark Jungers  
   and Sabrina Skulsky  
 Tom and Esta Kallen  
 Olwyn J. Kane  
 Dr. Evelyn Grant and Dr.  
   Clifford Kavinsky
- Matthew J. Keller, Jr.  
 Kip Kelley  
 Julie and Bill Kellner  
 George and Judy Kennedy  
 Debra & Chuck Kent  
 Susan Kern, M.D.  
 Dr. M. Barry and  
   Diane Kirschenbaum  
 Henry and Sandra Kite  
 Jane and Paul Klenck  
 Mr. Paul Kleppner  
 Jean Klingenstein  
 Pamela Knowles  
 Lisa Kohn  
 Gera-Lind Kolarik,  
   Evidence Video  
 Lori Komisar  
 Bill Konczyk and Stan Conlon  
 Electra Kontalonis  
 Mr. and Mrs. Robert Korajczyk  
 Thomas Kosinski  
 Kurtis Kossen  
 Robert and Anne Krebs  
 Rosemary Krimbel  
 Liz Krimendahl  
 Erica & Frank Kuhlmann  
 Terri Lacy  
 John L. Ladle, Jr.  
 Carol G. LaMar  
 John Lane  
 Walter and Mary Langbein  
 Dr. and Mrs. Richard Lariviere  
 Matthew J. Larsen  
 William and Blair Lawlor  
 Charles and Mary Lee  
 Hee Ja Lee  
 Lisa Lees  
 Phillip Lehrman  
 Ruth Lekan  
 Ron Lepinkas  
 Robert and Julie Lepri  
 Frank and Joyce Lester  
 Alexis and Jay Levin  
 Carolyn S. Levin  
 Gerald and Laurie Levin  
 Ms. Laurie Levin  
 Fran and Chuck Licht  
 Lynne and Bob Lisco  
 Ms. Michelle Long  
 Claude and Ruth Lucchesi  
 Mary and William Ludford  
 Dr. Mark Lundell  
 Stephen M. Lynch  
 Mary Frances Madison  
 Dr. Edward and Helen Magid  
 Anthony P. and  
   Mary B. Mahowald  
 Antohony Maier  
 Make It Better  
 Irene Makris  
 Conor and Olesya Malloy  
 George and Roberta Mann  
 Sarah R. Marino  
   and James Geren  
 Jennifer Marling  
 Laura and Craig Martin  
 Drs. Anette and John Martini  
 William F. Marutzky

# INDIVIDUAL CONTRIBUTORS

- Barbara and John Massey  
David and Karen Mattenson  
Margaret and Mike McCoy  
Ann and John McDermott  
Donald and Julie McElroy  
Stephen J. and Rita McElroy  
John McGowan  
Mary and Daniel McGuire  
Rodrick and  
Yoshie McIlquham  
George and Alice McKann  
Joan and John McLane  
Margaret McLaughlin  
Sandra McNaughton  
Dr. Janis Mendelsohn  
Angela Mersch  
and Steve Ryder  
Sandra and Michael Meyers  
Annemarie Michaud  
Robert O. Middleton and  
Chai-Fen Chang  
Tom Mikrut  
Elizabeth Milke  
Marshall and  
Gwendolyn Miller  
Patricia M. Milroy  
Richard Moenning  
Antonia Mohs  
Mr. and Mrs. R.L. Moody  
Annette C. Moore  
Mr. Steven Morris  
Heather Morrison  
Gail Morse and Lauren Verdich  
Margaret Moses  
and Mike Zimmer  
Bobbie Mueller  
Sandra L. Mueller  
Patricia E. Mullin  
Mr. and Mrs.  
David M. Murdoch  
Kathleen and J. Brian Murphy  
Larry and Joan Murphy  
Annie Murray  
Kay C. Nalbach  
Gary Neddneriep  
Dr. Susan Nedza and Dr.  
Oswaldo Lastres  
Nicolas H. Nelson  
Frederick C. Newport  
Edwin and Janice Nickel  
Stan and Kathleen Niew  
George and Paula Noble  
Dr. Angela Normoyle  
Elisabeth and Sam Norwood  
Mrs. Ellen Evans Noth  
Hiram and Pat Nowlan  
Kevin and Margaret O'Keefe  
Maria and Ted O'Keefe  
Steve and Heide Olson  
Mr. and Mrs. Dave Orkowski  
Neal and Mary Clark Ormond  
Jim & Sharon O'Sullivan  
Sarah R. Packard  
James Padgett and  
Rosanne Fitko  
Susan Pagles  
Grayce Papp
- Drs. Allen L. and Georgia  
Parchem  
Ms. Joan Parks  
Susan Pastin  
The Patris Family  
Jennifer and Scott Pattullo  
Ilene Patty and Tom Terpstra  
Peggy H. Paulsen  
Charles and Melanie Payne  
Patrice Pearsall  
Margaret Pendry  
Robert and Barbara Perkaus  
Gerald Perutz  
Mr. David Peterson  
Anne and Don Phillips  
Karen Pierce and Carey Weiss  
Carl and Barbara Plochman  
Vivianne and Joel Pokorny  
Mary Jane Pollack  
Ken Porrello and Sherry McFall  
Sally and Jim Porter  
Joan Powers  
Linda Prasil and John Rank—  
To Celebrate Shakespeare  
Joe Pratt  
Marilyn and Roger Price  
Faye J. Prince  
Dr. and Mrs.  
James C. Pritchard  
Priti Purohit  
Graham Putnam and  
Kathryn Andersen Putman  
Chris and Elizabeth Quigg  
Michael Rathsack  
Roger Rathunde  
James M. Rauh  
Doug Regan  
Suzanne Reid and Ken Leone  
Jeffrey and Susan Rein  
Peggy and Phil Reitz  
Janet and Gary Resnick  
Mr. and Mrs. Gregg Revak  
Sharon Rice  
Mark Richman  
Shelby and Debra Rifkin  
Gerald Riva  
Jackie River and  
Louis P. River III, M.D.  
Anthony Riviello  
Marilynn and Charles Rivkin  
John and Beth Roffers  
Dr. Ashley S. Rose and  
Charlotte B. Puppel-Rose  
Nancy and Scott Rosen  
Judy and Warner Rosenthal  
Joan Fiona Ross  
Nuna and Ennio Rossi  
Sidney and Alexandra Roth  
William and Patricia Rotz  
Norman J. and Alice E. Rubash  
Susan B. and Myron E. Rubnitz  
Jonathan and Cheryl Ruff  
Ed and Diana Ruthman  
Ms. Carolyn Ryan  
Robert and Cheryl Ryan  
Alana Rybak  
Toby & Penelope Sachs
- Susan C. Salay  
Nancy A. Sans  
James and Judith Satkiewicz  
Robert P. Schaible  
Marianne and Ben Schapiro  
Marie-Claude Schauer  
Anne and Steven Scheyer  
Dr. Nancy Schindler  
and Mr. Jon Schindler  
Robert and Mary Schloerb  
Rose Schmidt  
Dr. Nicholas Schneider  
and Angela Schneider  
Gene and Faith Schoon  
Deborah and George Schulz  
Larry and Natalie Schumacher  
Will Schwarz and Nancy  
Grace; Sam, Anna  
and Nate Schwarz  
Donald and Victoria Scott  
James M. Sears  
Joan Peters  
Richard J. L. Senior  
Parijat A. Sharma  
Ruth Sharps  
Ilene Shaw  
To the Health Information  
Management Profession  
Mr. and Mrs. Shorey  
David Francis Show  
Peter & Max Sichrowsky  
Michael, Leslie  
and Collin Sieber  
Mr. and Mrs. Howard Siegel  
Anna and Mark Siegler  
Joyce and Frank Simutis  
Mr. Gregg Skalinder and  
Mrs. Barbara B. Kreader  
Christine Sloan  
James and Mary Jo Slykas  
Edward W. Smeds  
Charles F. Smith  
Craig and Linda  
Fontana Smith  
Elaine D. Smith  
Susan Smith  
Shirley S. Solomon  
Mr. Ben Z. Sosewitz  
Rand Sparling  
and Adrienne Meisel  
DeeDee Spence  
Natalie Stackler  
John C. Stark  
Cynthia Steimle  
Mr. Bruce Stein  
Sharon Stein  
Janet and Charles A. Stern  
Hal Stewart  
Michael and Nancy Stieber  
Ben Stoner and Crystal Lake  
South High School  
Mr. George R. Strohl  
Joyce and Edward Sturuss  
Sunflower Creative Arts  
George Patrick Surgeon  
Michelle Swalec  
Sandra Sweet and Eva Carrillo
- Sylvester Construction  
Services, Inc.  
David Szumny  
Mr. Alvin Telser  
Harold L. Temple  
Joseph and Dahlia Teshar  
Barbara and Randy Thomas  
Matt Thomas  
James Thompson  
F. Joseph Tomecek  
Carol and Larry Townsend  
James M. and Carol D. Trapp  
Sally L. Trekel  
Jack and Betty Trickler  
Edith and Edward Turkington  
Mary Kay Tuzi  
Michael Urbut  
Mr. Edward Valauskas  
and Ms. Nancy R. John  
James and Elfrieda Vlaming  
Rakesh Vohra  
Karen & Herb Wander  
Mr. and Mrs.  
Albert Wanningner  
Gwenyth B. Warton  
David Wasserman, M.D.  
Charles and Ruth Watts  
Fred and Kathy Weber  
Mirands Wecker  
Mr. and Mrs.  
Morris S. Weeden  
Jim and Mary Weidner  
Dr. and Mrs. Lowell S. Weil, Sr.  
Nicholas Weingarten  
and Cynthia Winter  
Lyman and Deana Welch  
Susan and Richard Wellek  
John W. Wheeler  
Steve and Bonnie Wheeler  
Floyd and Judith W. Whellan  
Ron Wielage  
Joan Wiff  
Diana Williams  
Michael and Tracey Williams  
Mr. and Mrs. Alfred Winick  
Raymond Wise  
and Ted Robinson  
Christine and Michael Wolf  
Pamela and Bruce Wolfe  
Sarah Wolff and  
Joel Handelman  
Jeffrey and Claudia Wood  
John and Christine Wray  
Philip and Virginia Yarrow  
Stephanie Kim Yee  
and Eric Haab  
Bruce Worthel and  
Barbara G. Young  
Monique Youree—  
for Coriolis Theater  
Rev. Louis J. Zake  
J. Ziebk  
Grace H. Zimmerman  
Ethel Zitnik  
Christine Zrinsky  
Anonymous (19)



# ASSOCIATES

## \$150-\$249

Mr. Ron Adams  
 and Ms. Leah Ogden  
 Carol and Larry Adelman  
 Stephen and Victoria Adik  
 Stacy Adlman  
 Joan M. Agosto  
 Masoom Ahmed  
 Marjorie Albrecht  
 Richard and Elaine Albright  
 Celia Althage  
 John and Mary Alukos  
 Dan and Roz Alvarez  
 Mychal and Dorothy Angelos  
 Janet Anixter  
 Julia and Larry Antonator  
 Mrs. Raymond L. Arbetman  
 Arthur A. Arfa  
 Jennifer Ameson  
 Harriet Arnold  
 Drs. Andrew and Iris Aronson  
 Delbert and Barbara Arsenault  
 Terry and Suzan Athas  
 Mrs. Ann Audrian  
 Kaye B. Aurigemma  
 Carl and Julia Backer Family  
 James P. Baker  
 Linda Baker  
 Eugene Balter  
 and Judith R. Phillips  
 Peter T. Bandelow  
 Jack and Tina Barbaccia  
 Leone Barnett  
 Mr. Richard Barnett  
 Peter Barrett  
 Richard Barrett-Olson  
 Michael and Felicia Baskin  
 Elizabeth Scoville Beck  
 Eva Carol Beck  
 Pamela and Robert Becker  
 Kirsten Bedway  
 & Simeon Peebler  
 Kathy Beiser and  
 Mick Domalaga  
 John and Lynn Benson  
 Dennis and Laura Bergeson  
 Robert Berghoff  
 Julie and Lawrence Bernstein  
 Leslie L. Berry  
 Steven Berry  
 Robyn Betchner  
 Helen and Charles Bidwell  
 Noel and Shirley Biery  
 Anne Bilos  
 Mr. and Mrs.  
 Michael Biscan, Sr.  
 Lynne Blanton  
 John and Stephanie Blaser  
 Merrill and Judy Blau  
 Bernard and Nancy Blayer  
 Richard and Lynn Blessing  
 Lindy and Al Bloom  
 Carolyn and Phillip Boch  
 Gayle D. Bohne  
 Linda Bolte  
 Lorraine Bonecki

Joseph Boniecki  
 Gregory and Rosalie Bork  
 Katie Bourne  
 Aldridge Bousfield  
 H. Woods Bowman and  
 Michelle M. Thompson  
 Michael Bradie  
 Robert Bradner  
 Cate Brady  
 Dr. Alice G. Brandfonbrener  
 Mrs. John J. Bransfield, Jr.  
 Peg Breslin  
 Robert and Joell Brightfelt  
 Kim Brodhagen  
 Mr. and Mrs.  
 Arnold Brookstone  
 Larry and Susanne Broutman  
 Beth Brown  
 Edward and Patricia  
 Bruno and Family  
 Richard and Barbara Bull  
 Robert Burchell  
 Adrienne Butler  
 Brenna Bychowski  
 Lutgart J. Calcote  
 Karen A. Callaway  
 Judy Cape  
 Mark Cappello  
 Amy and Jeff Cardella  
 Jill A. Carlberg  
 Drs. Michelle Carlson  
 and Juan Hereña  
 Sara Carlson  
 George M. Carpenter  
 Sharon L. Carr  
 Phyllis Carroll  
 David F. Carter  
 Aidan and Miles Casey  
 Philip Castillo  
 and Susan Rundle  
 James Cavanaugh  
 Jean Cavanaugh  
 Robob and Judy Chalberg  
 Ms. Linda Cherney  
 Judy M. Chernick  
 Chicago Finance Exchange  
 Gerry and Carol Chrisman  
 Eric P. Chun  
 Marilyn Cicero  
 Mary I. Cirks  
 Classic Center Cultural  
 Foundation (Athens, GA)  
 Kelley Cloud  
 Brian J. Clucas  
 Lydia G. Cochrane  
 Mr. and Mrs. Henry Cohen  
 Mr. and Mrs. Dan Cole  
 Mary E. Collins  
 Timothy Colucci  
 Connie Connell  
 Peter and Judith Connolly  
 Gordon P. and  
 Sigrid L. Connor  
 Jack Cooksey  
 Edward J. Cooper  
 Ms. Alma Corona

Marian M. Cosmides  
 Mary Costanzo  
 Caroline P. Cracraft  
 Sally Reynolds and  
 Karl A. Cremieux  
 Mary and John Crois  
 Dr. Don Cronin  
 Rosemary Crowley  
 Alan and Charlotte Cubbage  
 Elaine Cue  
 Mr. Ronald J. Dammon  
 Lorraine M. Danders  
 Elizabeth Danos  
 David and Kathy  
 Michael Davis and Art Williams  
 Robert Davis and  
 Richard Lundgren  
 DeAurora Inc.  
 Barbara B. and Robert DeBolt  
 Phyllis Deerinck  
 Dr. John G. Del Greco  
 Dr. Michele Del Signore  
 Eloise C. DeYoung  
 Paula J. Dillon  
 Dr. and Mrs.  
 Henry Dold, M.D.  
 Michael and Tara Doman  
 Don and Margaret Donahue  
 Keith and Chris Donaldson  
 Mary Donners Meyer  
 Connie Donovan  
 Allie and Mike Doubek  
 Daniel R. Downs—  
 For More Shakespeare!  
 Rita Dragonette  
 Thomas and Susan Drake  
 Jennifer Drinkwater  
 Margaret Driscoll  
 Ms. Rosanne Druian  
 Frances Duda  
 David and Dorothy Duffell  
 Michael and Donna Dumke  
 Katie Dunn  
 Thomas and Martha Dwyer  
 John Dyble  
 Victoria E. Ebeling  
 Anne Egger  
 Nancy Eichelberger  
 Seth and Rosalind Eisner  
 Eric and Melissa Elbert  
 Larry and Nancy Elkins  
 David and Susan Ellis  
 Dr. Brenda Eriksen  
 Mr. and Mrs. Lawrence Erlich  
 Virginia Ertle  
 Elizabeth Ester  
 and Michael Brody  
 Grace and Thomas Ewert  
 Edward and Judy Ex  
 Fair Oaks Contractors  
 Linda C. Fairbanks  
 and Jeanne DeVore  
 Susan and  
 Christopher Faraone  
 Michael Faris  
 Robert Fauria

Roger and Eleanor Feldman  
 Robert Feldstein  
 Julie Fenton  
 and Stuart Chanen  
 Bobby and Charlene Ferguson  
 Rick Ferguson  
 Jack Ferrero  
 Amy Fielek  
 Mary Finneran  
 Cotton and Diane Fite  
 Edith Fitts  
 David B. Flax  
 Marcia L. Flick  
 Shelton L. Flowers  
 and Gustina L. Warren  
 Marilyn and Eric Fors  
 Maynard Fossum  
 Judith Fox  
 The Rev. Mark A. Fracaro  
 Rhona and Julian Frazin  
 Dennis & Rocca Fredrickson  
 John and Carol Friedheim  
 Mr. James Freundt and Ms.  
 Diane M. Tkach  
 Jeannie and Dan Frey  
 Merle Friedman  
 Robyn Gilliom  
 and Richard Friedman  
 Mr. and Mrs.  
 Richard Fruhwirth  
 Alexis Funches  
 John Fyre and Joan Greco  
 John and Mary Galati  
 Donn and Barbara Gardner  
 Katrina and Les Garner  
 Charlotte Garabrant  
 Raymond & Patricia Gass  
 Susan Mabrey Gaud  
 From the Genseal  
 Family Foundation  
 Dr. and Mrs. Mel Gerbie  
 Patricia and Grant Gerrond  
 Arlene and Camillo Ghiron  
 Sally and Michael Gibbs  
 Betty Gilbert  
 Patricia and James Gladden  
 Maureen and John Gleason  
 Deborah Gleeson  
 Dr. Paul Glickman  
 Teresa Glotzbach  
 Alexandra Gunsee  
 from Mom & Dad  
 Claire and Mark Golan  
 Sue Golan  
 Jaye and John Golanty  
 Natalie Goldberg  
 Anne Goldman  
 Erid J. Golinkin  
 Robert Gonnella  
 Steve and Linda Goranson  
 Michael Gordon  
 Susan Graff  
 Donald and Jane Gralen  
 Joel and Sharon Greenburg  
 Marilyn J. Gregg  
 Geraldine Grennan



# INDIVIDUAL CONTRIBUTORS

Dr. Nichols Grimes  
 Marguerite Grizzi  
 Mary Grobarcik  
 Charles Grode  
 Jessica Groen  
 Mr. and Mrs. Michael Grossi  
 David Grossman  
 Arlette Grubbe—  
     In recognition of the  
     special teachers in her life  
 Christine J. Gruber  
 Marnie Gucciard  
 Cathy Gustafson  
 Mr. Kenneth Guy  
 Mr. Robert J. Haber  
 Katherine and  
     Alfred Hackbarth  
 John and Anne Hackett  
 Suzanne Hall  
 Chester and  
     Phyllis Handelman  
 Mr. and Mrs. David L. Hanson  
 Nicholas Harlin  
 Janis and Boyd Harman  
 Lois and Michael Harring  
 John Hugh Harris  
 Lois and Donald Hartung  
 Charles D. Harvey  
 Jack and Helen Haugsnes  
 Grace Healy  
 Donald and Mary Heinrich  
 Sandra L. Helton  
     and Norman M. Edelson  
 Leo and Carol Henikoff  
 James and Carol Herber  
 Judy and Jay Heyman  
 V.E. Hicks  
 Ms. Elaine T. Hirsch and  
     Mr. Donald J. Grossman  
 Nancy and Allen Hirschfield  
 Vivian and David Hock  
 David Hoffman  
 Elizabeth Hogan  
     and Louis Chan  
 Carol and Jeff Holden  
 Dr. Deborah Holdstein  
     and Mr. Jay Boersma  
 Amy and David Hollander  
 Alan J. Hommerding and  
     Robert K. Personett  
 Ellen R. Horween  
 Suzanne and Gene Hotchkiss  
 William Hottinger  
 Ina and John Houck  
 Rose M. Houston  
 Mr. and Mrs. William Hummer  
 Harry J. Hundeman  
     and Deborah Slaton  
 In Memory of Barbara Hunt  
 Mr. Robert C. Hyndman  
 Lois Isenminger  
 Richard L. Jackson  
 Ann Jacobson  
 Janet Jaekel  
 Nancy and Lonnie Jenkins  
 Patricia A. Jiganti  
 Dr. Hulon and  
     Dr. Raymond A. T. Johnson  
 Nancy Johnson

Margaret and Gary  
     Kachadurian  
 Margo and Dan Kadjan  
 Pamela and Frank Kaji  
 Catherine Kallal  
 Kathleen Kallan  
 Vicky Kalogera  
 Kim and Andy Kammer  
 Mr. and Mrs. James Kargman  
 Themis and Melodie Karnezis  
 Heather and Molly Karstens  
 Diane and Byron Karzas  
 Dave Kathman  
 Thalia Katsaros  
 Claudia Katz  
 Mr. and Mrs.  
     Thaddeus P. Kawalek  
 Paula and Jerry Kaye  
 Linda Keane  
 Dedicated to  
     my daughter, Megs  
 Mr. and Mrs. Keethers  
 Heather Prendergast Kelley  
 Dennis Kelly  
 Mike and Laura Kelly  
 Dr. Margaret Kelly at  
     Chicago State University  
 Katherine and Kevin Kenward  
 Kathryn and Bill Kerr  
 David and Sharon Kessler  
 Algimantas Kezelis  
 Kishwar Khalid  
 Mr. David King  
 Thad King  
 Martijn Kist  
 Thomas and  
     Margaret Kittle-Kamp  
 Larry Kluskens  
 Jim Knudsen  
 Colleen Mitchell Knupp  
 Dr. Norman Kohn  
 Janet Kohrman  
 Michael Kolloway  
 Judy and Perry Kozicki  
 Susan F. Kozlowski  
 Anne and William Kragh  
 Susan and Manny Kramer  
 Catherine Krause  
 Mary Jean Kraybill  
 Nancy and Rick Kreiter  
 Philip A. Krempely  
 Cameron Krieger  
 Adrienne and Jeffrey  
     Kriezelman  
 Joan and Jordan Krimstein  
 Christina Kronkowsky  
     D.D.S., PC  
 Benjamin Krumstok, M.D.  
 Linda Kulikowski  
 Donald and Patricia  
     Kummings March, 2013  
 George Kunzmann  
 Jacob Kupietzky  
 Nancy and Ron Kurz  
 Robert Kurz and Marian  
     Hummel Kurz  
 Ron and Maryanne Labine  
 Diane and Chuck Laff  
 Jon and Camellia Laing

Mary Ellen Lamb  
 Richard and Meghan Lamb  
 Anthony Lampl  
 The Lancaster Family,  
     Nashville, TN  
 Eileen B. Landau  
 Richard Landau  
 Stephen and Beth Landsman  
 Ginger Speigel Lane  
 Bradley Larson  
 Richard and Irma Larson  
 Phyllis Laughlin  
 Corinne Lee  
 Lew and Laurie Leibowitz  
 Dr. Janet V. Leonard  
 J. G. Leonhardt  
 Michael Levey  
 Joan and Murray Levin  
 Roberta and  
     Stuart Levin, M.D.  
 Becki Levi, Food for Thought  
 Susan Levitt  
 Judy Lewis  
 Steven and Barbara Lewis  
 David and Carol Liner  
 Velda Lloyd  
 Bruce and Nancy Lockwitz  
 Sara Segal Loevy  
     and Steven R. Lovey  
 Kristine Loquist  
 Leslie Losh  
 John and Nancy Lucey  
 Richard Luecke  
 John and Rosemary Luther  
 Emily and James Macdonald  
 Jolie Macier and James Niehoff  
 Mary and Larry Mages  
 Magical Minds Studio  
 Stacy Mainelli  
 Loretta Malone  
 Naja and George Maltezos  
 Rose Manak  
 Sharon Manuel  
 Stephen and  
     Susan Bass Marcus  
 Mr. David Marker  
 James Marks  
 Mr. and Mrs. Charles Marlowe  
 Edward Martin Jr.  
 Peter and Frances Martin  
 Patricia Daley Martino  
 Robert J. & K. Ruth Marx  
 Kate Mascarenhas  
 Lawrence and Susa Mason  
 Massery Family  
 The Masters and Pence family  
 In Memory of Eugene  
     Bryant and In Honor  
     of Barbara Gaines  
 Grace Mayer  
 Margaret McAlevey  
 Patricia McArthur  
 Heather McCann  
 Mr. and Mrs. Paul McCoy  
 Stacey and Patrick McCusker  
 David and Laurie McElligott  
 Amy McFarland  
 John McFerrin  
 Andrew and Pamela McGaan

Karen C. McGirr  
 Mary McLaughlin  
 Florence McVillan  
 Gordon and  
     Stephanie Medlock  
 Robert Meiborg  
 Claretta Meier  
 Constance Meinwald  
 Lois and Hugo Melvoin  
 Lisa & Abby Merrill  
 Susan Messinger  
 Carol A. Mester  
 Jack and Judie Metzgar  
 Jim and Ginger Meyer  
 Dr. Jerrold & Marian Michaels  
 Charles L. Millett  
 Kristin and Roger Miller  
 Ronald S. Miller  
 Art and Linda Milton  
 Margaret M. Mitchell and  
     Richard A. Rosengarten  
 Edward J. Mitchen  
 Bill and Bobbie Moore  
 Emerson Moran  
 Philip D. and Patricia  
     Morehead  
 Todd and Linda Morning  
 Charlie and Dori Mostov  
 Sheldon Mostovoy  
 Lisa and Barry Moze  
 Dr. Martin and Chava Mozes  
 Emily Mulka  
 Joseph Murphy  
 Susan Murphy  
 Thomas F. Murphy  
 Sheila and Meredith Murray  
 Timothy & Janet Murtaugh  
 Barbara Murtha  
 Bruce Myers  
 Cathy Nathan  
 Thomas and Karen Nealis  
 Carol Thomas Neely  
 Ben and Mara Neill  
 Andrew Newton  
 Zehava L. Noah  
 Virginia Noerr and Len LaPasso  
 Jerry and Geraldine Nolen  
 Michael J. O'Connell  
 Colleen O'Leary  
 Ute and Reed O'Malley  
 Susan Mary O'Neal  
 Daniel O'Neill  
 Mr. Timothy P. O'Neill  
     and Ms. P. Jane Rutherford  
 Tolu Onigbanjo  
 Ms. Ornela's 7th Grade Class  
 Mary and Arthur Osteen  
 Matthew and Barbara Owens  
 Ronna Page  
 Prem and Patricia Pahwa  
 Susan Paoni  
 John P. Parkins  
 Mrs. Joan Parojcic  
 Tania M. Pasterz  
 Sue Ellen and  
     Michael J. Patkunas  
 Audrey and John Paton  
 The Patterson Family  
 Lois R. Pearson

Carol Pennel  
Mr. and Mrs.  
George B. Perlstein, Jr.  
Nadine Petersen  
Melanie and Dan Peterson  
Viktora Petrolunas  
Maureen and Steve Pettinato  
Patricia and Gregory Peyer  
Genevieve Phelps  
Joe Piszczor  
Rita Pomerance  
Roger E.F. Ponn  
Clinton Popetz  
Barbara Provus  
John Quane  
Michael Querfurth Family  
Erin Quigley  
Thomas Quinn  
and Eileen Furey  
Norm Raidl  
Shobha Lakshmi Rao  
Pam and Fred Rawles  
Herbert Reece  
Mary Lee Reed  
Louise Lee Reid  
Daniel Reidy  
Michael E. Reiss  
Remus Engineering  
Paul and Marcia Renaud  
Marilyn and Guy Revesz  
Joan Chilton Richards  
Hal B. Richerson  
Percy and Leigh Roberts  
Solvig and Harry Robertson  
Howard and Mary Robins  
Edward Robinson  
Joan V. Roeder  
Robert and Eleanor Roemer  
Linda Rogers  
Michael V. Roman  
and Gary R. Paaren  
Mary Rooney  
Richard Rooney  
Laura Marie Rosch  
Ms. Karen Roseth  
Barbara Rosin  
and Harvey Kallick  
Jack & Melanie Ross  
Doug and Lisa Rosskamm  
Martha Roth  
and Bryon Rosner  
Jay and Maija Rothenberg  
Cyndi Rotnodo  
Judy Royal and Tim Patenode  
Jane G. Rozoff  
Anonymous  
Sheri A. Ruppel  
Marilyn and  
David Ruschhaupt  
Dr. and Mrs. Stephen Ruskin  
Tom and Jennifer Rynkiewicz  
Lowell Sachnoff  
and Fay Clayton  
Susan L. Sack  
Esther Saks  
Michael E. Sanders

Raudel Sandoval  
Alejandro SantosLeal  
Alonco Saracay  
Gary and Kay Saxvik  
Edna Schade  
Mr. and Mrs. Stanley Schade  
James and Sally Schlobohm  
Susan and Edward Schiele  
Elizabeth Schlosser  
Dr. Kenneth Schmidt  
Art Schneider  
Mr. and Mrs.  
Lewis M. Schneider  
Doug and Liz Schuetz  
Bonnie Schukai  
Robert and Stacy Schultze  
Dr. and Mrs. Donald Schwartz  
Judy and Erich Schwenker  
Tony and Celeste Scolaro  
Robert Scott  
Pat Sczygiel  
Ralph and Nancy Segall  
Steve and Katherine Selcke  
Donald and Ruth Sender  
Joseph C. Senese  
John Sergio  
Leslie Shad  
Myron and Beverly Shapiro  
Liz and Jeff Sharp  
Thanks for your excellence,  
Charlotte & Jim Sheay  
Dr. and Mrs. James C. Sheinin  
Nancy and Richard Sher  
Dr. Terry Sherer  
Ann Shilladey  
Mark A. Shornick  
Bill and Harlan Shropshire  
Ellen and Richard Shubart  
Gerri Shute  
Renee and Michael Sichlau  
Bruce and Sarane Siewerth  
Rick Simon  
Frank and Joanne Sims  
Theodore Lane Skeeters II  
Wesley Skogan  
and Barbara Puechler  
Jenna Skrak  
Andrew and Mary Lou Sloan  
Sharon R. Sloan  
Mr. and Mrs. Smith  
Phyllis and Gerald Smith  
Julia Smith and Ira Bodenstien  
Lewis and Ellen Smith  
Madison R.  
and Carolyn J. Smith  
Robert A. Smith  
Liz Sode  
Andy Soyring  
Nancy Spain  
Dr. and Mrs.  
Marshall Sparberg  
Catherine and Bryan Sponsler  
Anne Springer  
St. Louis Catholic School,  
Princeton, IL  
Josh Stein

Mary Steinberg  
Maureen Steindler  
Donald F. Steiner  
Mr. and Mrs.  
Wallace J. Stenhouse, Jr.  
Marilyn Sternberg  
Don A. Stevens  
L. J. Stevens  
Don and Isabel Stewart  
J. Timothy Stewart  
John Stiefel  
Betsy and Doug Stiles  
Paul Pomchey Stiles  
Mary Stitt  
Jane B. Stone  
Louise Stone  
Richard J. Stuckey  
Studio A  
Patricia Study  
Rosanne and William Sullivan  
Louis and Barbara Sunderland  
Thomas and Pat Swaney  
Judy Swiger  
Mr. and Mrs.  
Casmir F. Szczepaniak  
Obie and Peter Szidon  
Louise I. Tausche  
Susan C. Taylor  
Wynn Taylor  
Linda and Thomas  
Teichgraeber  
M K Terrell  
John and Eva Terschak  
Ronald Tevonian  
Cheryl Thaxton  
Dr. William Thierfelder  
Paul C. Thistlethwaite  
Pamela A. Thomas  
and John Ladley  
Floyd Thompson  
Joan and Kenneth Thompson  
Carl R. Tisone  
Dr. Fred Tolin  
The Trimak Family  
Steven Trimble  
Celeste Troon  
Coleman and Deborah Tuggle  
Mr. and Mrs. William Twohig  
John and Lori Twombly  
Joanne Twomey  
Jane and Howard Tyner  
Scott and Beth Ullem  
Shaun Van Horn  
Robert van Riemsdyk  
D.A. Vandevender  
Mr. and Mrs. Ronald Vavrinek  
Margaret Veach  
Esther Velis  
Steve and Debbie Viktora  
Barbara Vines  
Diana Visco  
Dona Vitale  
John and Katie Wahlman  
Todd Walbert  
Russel Walen  
Caroline Walkinshaw

David and Anna Mary Wallace  
Magnus Waller  
Larry and Doris Walther  
Royal Ward  
Sandra and Steve Waters  
Bill and Rose Webb  
Susan Weber  
Barbara Webster  
Sandra and Bruce Wechsler  
Richard and Mary Weeks  
Vasiliki and Peter Weiden  
Jim & Mary Weidner  
Barbara and Thomas Weil  
Olga Weiss  
Sherrie Weiss  
Ellen and Cheri Weissman  
Jerome and Sara Wermuth  
Jeanne Westcott  
J.J. and Sheena Wett  
Doug Whinnery  
Lawson & Jane Whitesides  
Roberta Whitworth  
Joan and Raymond Wielgos  
Lance Wilcox  
and Linda Roberts  
Dr. Thomas Wilda  
Mr. and Mrs. Gary E. Wilham  
Michelle Wilhelm  
Mr. and Mrs. Wilkinson  
John and Nancy Wilks  
Marty and Barbara  
Williams Perry  
Bruce and Barbara Williams  
Deborah B. Williams, PhD  
Jessica Williams  
Jan Williams  
Scott Williamson  
Jeff and Janet Wilson  
Peggy Stewart Wilson  
Ann Wise  
Adam and Vania Wit  
Ann Witting  
Dr. Jenny Wojcik  
Patrick and Patrice Wooldridge  
Abbott and Teana Wright  
Dr. Anne H. Wright  
Gwynne Wright  
Ruth N. Wukasch  
Tom and Tina Young  
Linda Youngman  
Howard Zaltzman  
Diane L. Zels  
Beth Zerman  
Mr. and Mrs. David Zesmer  
Mr. and Mrs.  
Robert E. Zimmerman  
John and Linda Zimmie  
Vanessa Zoerb  
Dr. Charles and  
Mrs. Gail Zugerman  
Janice Zulkey  
Anonymous (30)

# Tribute Program

An honor or memorial gift is a distinctive way to honor the memory of friends and family or pay tribute to milestone celebrations. For more information regarding this program, please call Melissa Collins in the Advancement Office at 312.595.5672 or [mcollins@chicagoshakes.com](mailto:mcollins@chicagoshakes.com).

*Reflects contributions received between May 30, 2012 and May 31, 2013*

## MEMORIAL

### **In Memory of Trudy Abarbanel**

Jonathan Abarbanel

### **In Memory of**

### **Dr. Morton Arnsdorf**

Rosemary Crowley

### **In Memory of Shirley Coplan**

Ann Kreminski

### **In Memory of Lois Dunn**

Kathy Dunn

### **In Memory of Arlene Fieldsteel**

V.E. Hicks

### **In Memory of W. Clinton Fisher**

Lois Farrell Fisher

### **In Memory of Marilyn F. Fritz**

Amy Graczyk

### **In Memory of**

### **Mary Louise "Lou" Hurckes**

Wilma and Don Baugous

Barbara Celarec

Deborah Cohen

Richard Rondale Fontaine

RoseMary and Dan Fuss

Ray and Melissa Garson

Nancy Goldstein

Carole and Richard Goodman

Dr. and Mrs. James Gorman

Melissa A. Hazlewood

Suzanne and Gene Hotchkiss

Cathy and Steven Hurckes

Gloria and John Kasonic

Mary K. Knight

Gary Prestopino

Jim and Charlotte Price

Pat Slapnick

Margaret and Kent Taylor

Margaret Vail

Nena and James Wagner

### **In Memory of Bunny Jacoby**

Milton Jacoby

### **In Memory of Charles**

### **and Mitchell Kaplan**

Mr. and Mrs. Brian S. Arbetter

### **In Memory of Thomas Kaska**

Judith Fox

### **In Memory of**

### **Walter B. Kulikowski**

Linda Kulikowski

### **In Memory of**

### **Abby S. Magdovitz-Wasserman**

David Wasserman, M.D

### **In Memory of William Marling**

Jennifer Marling

### **In Memory of Ed Minor**

Steve Turner & Ann Cuniff

### **In Memory of**

### **Gerald M. Penner**

Mona Penner

### **In Memory of our son Robert**

Sue and Kent Davis

### **In Memory of Sarajane Avidon**

### **and Felix Shuman Actors**

### **Training Fund**

Sara Segal Loevy and

Steven R. Loevy

### **In Memory of**

### **Gregory Schlesinger**

Dr. Constance Blade

### **In Memory of Laureen Tuzi**

Your Twin Anchors Family

## HONORARY

### **In Honor of Eve Alexander**

Matthew J. Larsen

### **In Honor of Kellen Blair**

### **and Joe Kinosian**

Kathleen Bemis

### **In Honor of Tad**

### **and Laura Eckert**

Stephen Kocian

### **In Honor of Madelaine Ellis**

Hope G. Nightingale

### **In Honor of Phil and La Engel**

Marcia L. Flick

Georgene R. Walters

### **In Honor of Phil Engel**

Diana F. Blitzer

### **In Honor of Joseph Fiennes**

Hal Stewart

### **In Honor of Barbara Gaines**

### **and Criss Henderson**

Caroline P. Cracraft

### **In Honor of Barbara Gaines**

Macki and Paul Ellenbogen

### **In Honor of the special**

### **birthday of Edith Gaines**

Dr. and Mrs. James C. Sheinin

### **In Honor of Katie Grogan**

Conor Grogan

### **In Honor of Mary**

### **and Peter Haab**

Stephanie Kim Yee and Eric Haab

### **In Honor of Marilyn Halperin**

Naja and George Maltezos

### **In Honor of Criss Henderson**

Faye Marlowe

### **In Honor of Diane Herr**

William E. Hall

### **In Honor of Daniel J. Hess**

Jill, Marissa and Marilyn

### **In Honor of the Jentes Family**

Adrian Foster

### **In Honor of Jan and Bill Jentes**

Liz Stiffel

### **In Honor of Betsy**

### **and Jack Karp**

Mr. and Mrs. Abel Friedman

### **In Honor of Richard**

### **and Patricia Kent**

Mr. and Mrs. Patrick Haynes

Dr. Evalyn Grant and

Dr. Clifford Kavinsky

### **In Honor of The Law**

Richard Moenning

**In Honor of Chase Levey**

Anstiss and Ronald Krueck  
The Howard and Kennon  
McKee Charitable Fund

**In Honor of Ray and  
Judy McCaskey**

Bill and Penny Obenshain  
Dan and Patty Walsh  
Wayne Whalen and Paula Wolff

**In Honor of Mark and  
Amy Montgomery**

Joan Wiff

**In Honor of Linda Orellana  
and Alana Rybak**

Sheldon Holzman

**In Honor of Richard Porter**

Niamh King

**In Honor of John Rau**

The Robert Thomas Bobins  
Foundation

**In Honor of Philip Rosenberg**

Emily Rosenberg Pollock

**In Honor of Rob Ryan**

Mr. and Mrs. Patrick G. Ryan

**In Honor of the kids of  
Sandy Hook Elementary**

Pamela A. Thomas and John Ladley

**In Honor of Carole and  
Gordon Segal**

James and Brenda Grusecki

**In Honor of  
William Shakespeare**

Robert and Julie Lepri

**In Honor of Scott and  
Katie Sigelbrown**

Gillian Flynn

**In Honor of George Simpson**

Mary Costanzo

**In Honor of Harold Skysky,  
Shakespeare professor at  
Hofstra University**

Mark Jungers and  
Sabrina Skulsky

**In Honor of Sharon  
and Michael Sloan's Wedding**

Iris D. Marreck  
Arlene J. Schultz  
In Honor of Kathy and Brian Spear  
Seth and Rosalind Eisner

**In Honor of Harvey Struthers**

Kathryn and Bruce Johnson

**In Honor of Carl  
and Marilynn Thoma**

The Patterson Family

**In Honor of Gayle Tilles**

Mr. and Mrs. William Adams IV  
Mrs. John J. Bransfield, Jr.

**In Honor of Marge  
Uhlarik-Boller**

Mary Ann Werman

**In Honor of Donna Van Eekeren**

Marilyn and David Rushhaupt

**In Honor of Donna Van Eekeren  
and Dale Connelly**

John & Patti Flanagan



Listed below are current members of the **First Folio Society**, individuals who have included Chicago Shakespeare Theater in their estate plans. The Society honors their thoughtful commitment to the future of CST.

Mr. and Mrs.  
Nicholas C. Babson  
Mr. and Mrs.  
John W. Barriger  
Joan Israel Berger  
George W. Blossom III\*  
Mr. and Mrs.  
Philip L. Engel  
Michael Goldberger

Julie and Parker\* Hall  
Corinne E. Johnson\*  
Dr. Anne McCreary Juhasz  
Judy and John Keller  
Anstiss Hammond Krueck  
Anne E. Kutak  
Raymond  
and Judy McCaskey  
Sheila A. Penrose  
and R. Ernest Mahaffey

Barbara Petersen  
Harold H. Plaut\*  
Rose L. Shure  
Chuck Simanek and  
Edna Burke  
Michael and Sharon Sloan  
The Solomon Family  
Gayle and Glenn R. Tilles  
Linda Vertrees

*\*deceased*

**To learn more about the Society, please contact Melissa Collins  
at 312.595.5672 or [mcollins@chicagoshakes.com](mailto:mcollins@chicagoshakes.com).**

# Matching Gifts

By providing matching support, the following organizations are actively contributing to causes that improve the communities where their employees live and work. Chicago Shakespeare Theater salutes these employers for increasing the impact of donor support. Contact your employer today to find out more about their matching gift initiatives.

*Reflects contributions received between July 1, 2012 and May 30, 2013*

Aon	HSBC—North America
AT&T Foundation	IBM Corporation
Baird Foundation, Inc.	Illinois Tool Works
Bank of America Foundation	Intuit Foundation
Boeing	Johnson Controls Foundation
The Capital Group Companies	JPMorgan Chase & Co.
CME Group	Kirkland & Ellis LLP
CNA Foundation	Kraft Foods
The Crown Family	Madison Dearborn Partners
Dell	Motorola Mobility Foundation
Emerson Electric Company	Nicor, Inc.
Lloyd A. Fry Foundation	Northern Trust
GE Foundation	Polk Bros. Foundation
General Mills Foundation	The Rhoades Foundation
Goldman Sachs & Company	USG Corporation
W.W. Grainger, Inc.	Wintrust Financial Corporation
Health Care Service Corporation	

# Contributed Materials

Contributed materials and services are an essential component in sustaining Chicago Shakespeare's role as a gathering place for audiences, artists and members of the community. We thank the following individuals and organizations for their valuable donations of goods and/or services.

*Reflects contributions received between July 1, 2012 and May 30, 2013*

Acadia	HAJ Designs
American Airlines	Hall's Rental Service
Arc Worldwide	Rich Hein
BBJ Linen	Heritage Wine Cellars, Ltd.
Broadway Cellars	HMS Media, Inc.
Bukiety Floral Design	Kirkland & Ellis LLP
Carol's Event Staffing	KPMG Family for Literacy
CDW	Motorola Inc.
Mary T. Christel	Nixon Peabody LLP
Communications Direct	Phil Stefani Restaurants, Inc.
Crain Communications, Inc.	Van Duzer Vineyards—
Dinkel's Bakery	Carl and Marilyn Thoma
Food For Thought Catering	
Frost Lighting Inc.	

# FREE FOR ALL!

chicago  
shakespeare in the parks



chicago park district

**BOEING**

# WILLIAM SHAKESPEARE'S THE COMEDY OF ERRORS

DIRECTED AND  
ADAPTED BY  
DAVID H. BELL

JULY 26–  
AUGUST 25,  
2013

PRODUCTION  
SPONSOR

BMO Harris Bank

**COME AS YOU ARE!**  
Bring your blanket or lawn chair.

**GATEWAY PARK  
AT NAVY PIER**  
Friday, July 26, 6:30 p.m.  
Saturday, July 27, 6:30 p.m.

**ECKHART PARK**  
Sunday, July 28, 4:00 p.m.

**TULEY PARK**  
Tuesday, July 30, 6:30 p.m.

**DYORAK PARK**  
Wednesday, July 31, 6:30 p.m.  
Thursday, August 1, 6:30 p.m.

**LOYOLA PARK**  
Friday, August 2, 6:30 p.m.  
Saturday, August 3, 6:30 p.m.

**HAMILTON PARK**  
Sunday, August 4, 4:00 p.m.

**SOUTH SHORE  
CULTURAL CENTER**  
Tuesday, August 6, 6:30 p.m.  
Wednesday, August 7, 6:30 p.m.

**HUMBOLDT PARK**  
Thursday, August 8, 6:30 p.m.  
Friday, August 9, 6:30 p.m.

**RIIS PARK**  
Saturday, August 10, 6:30 p.m.

**DOUGLAS PARK**  
Sunday, August 11, 4:00 p.m.

**PIOTROWSKI PARK**  
Wednesday, August 14, 6:30 p.m.

**GAGE PARK**  
Thursday, August 15, 6:30 p.m.

**WELLES PARK**  
Friday, August 16, 6:30 p.m.  
Saturday, August 17, 6:30 p.m.

**GARFIELD PARK  
CONSERVATORY**  
Sunday, August 25, 3:00 p.m.

**WASHINGTON PARK**  
Sunday, August 18, 4:00 p.m.

**MARQUETTE PARK**  
Tuesday, August 20, 6:30 p.m.

**RIDGE PARK**  
Wednesday, August 21, 6:30 p.m.  
Thursday, August 22, 6:30 p.m.

**FRANK J.  
WILSON PARK**  
Friday, August 23, 6:30 p.m.  
Saturday, August 24, 6:30 p.m.



**FOR INFORMATION: 312.595.5600 • WWW.CHICAGOSHAKES.COM/PARKS**

LEAD SPONSORS



BlueCross BlueShield  
of Illinois



Top to Bottom: Samuel Taylor, Tiffany Yvonne Cox  
and Jürgen Hooper, photo by Michael Broselow



# *Set Sail!*

JOIN THE  
ADVENTURE!

---

FAMILY FUN!

---

MULTIPLE DAILY  
DEPARTURES!



## TALL SHIP WINDY



NAVY PIER  
312.451.2700  
[www.tallshipwindy.com](http://www.tallshipwindy.com)

LOCATED JUST OUTSIDE OF CHICAGO SHAKESPEARE!