

The Chicago Chamber Musicians and Target®
in collaboration with Chicago Shakespeare Theater
proudly present

Fairy Tales

by William Bolcom
based on stories by the Brothers Grimm



chicago
shakespeare theater
on navy pier



Presenting
Sponsor

Saturday and Sunday, January 18 and 19, 2014



The Chicago Chamber Musicians UPCOMING PERFORMANCES

MONDAY, FEBRUARY 3 · 12:15 P.M.

Free First Monday Concert
Chicago Cultural Center

FEBRUARY 9, 10 · 7:30 P.M.

Heavenly Winds

Pick-Staiger Concert Hall, Northwestern University
Anne and Howard Gottlieb Hall, Merit School of Music

MARCH 30, 31 · 7:30 P.M.

Musicians' Renaissance

Nichols Concert Hall, Music Institute of Chicago
Anne and Howard Gottlieb Hall, Merit School of Music

MONDAY, APRIL 7 · 12:15 P.M.

Free First Monday Concert
Chicago Cultural Center

MONDAY, MAY 5 · 12:15 P.M.

Free First Monday Concert

Chicago Cultural Center

MAY 18, 19 · 7:30 P.M.

Convivial Conversations

Pick-Staiger Concert Hall, Northwestern University
Anne and Howard Gottlieb Hall, Merit School of Music

312.819.5806 · www.chicagochambermusic.org

Chicago Shakespeare Theater UPCOMING PERFORMANCES

FEBRUARY 6–MARCH 23

Gypsy

A Musical Fable
book by Arthur Laurents
music by Jule Styne
lyrics by Stephen Sondheim
directed by Gary Griffin
in CST's Courtyard Theater

**FEBRUARY 22–MARCH 22
SATURDAYS AT 11:00 A.M.**

Short Shakespeare!
A Midsummer
Night's Dream

by William Shakespeare
adapted and directed by
David H. Bell
in CST's Courtyard Theater

MARCH 13–MAY 4

Road Show

music and lyrics by
Stephen Sondheim
book by John Weidman
directed by Gary Griffin
Upstairs at
Chicago Shakespeare

APRIL 29–JUNE 15

Henry V

by William Shakespeare
directed by
Christopher Luscombe
in CST's Courtyard Theater

312.595.5600 · www.chicagoshakes.com



The Chicago Chamber Musicians and Target®

in collaboration with

Chicago Shakespeare Theater

proudly present

Fairy Tales

by William Bolcom

based on stories by the Brothers Grimm
with additional music by Benjamin Britten

January 18 and 19, 2014

10:00 a.m. and 11:30 a.m.



Sponsored by



About the Story

CCM's 2013/2014 season marks Benjamin Britten's 100th birthday anniversary and the 75th birthday of William Bolcom. This concert introduces the audience to the String family of instruments, and gives children the opportunity to discover, up close, the excitement of live performance.

William Bolcom's fresh treatment of *Fairy Tales*—including *The Fisherman and his Wife*, *The Frog Prince*, *Jorinda and Joringel*, and *The Hare and the Hedgehog*—gives children the opportunity to learn how instruments are played and interrelate with each other and actors to create a theatrical event. His *Graceful Ghost Rag* is probably his most widely known piece and opens the concert. Also on the program are excerpts from the *Simple Symphony*, written by Benjamin Britten, composer of *The Young Person's Guide to the Orchestra*. *Simple Symphony* was based on music from Britten's childhood. It also was used extensively in the musical score for the commercial film, *Moonrise Kingdom*.

Musicians & Cast

JOSEPH GENUALDI Violin
MATHIAS TACKE Violin
RAMI SOLOMONOW Viola
CHENG-HOU LEE Cello
DOUGLAS JOHNSON Double Bass
BILL LARKIN Narrator
MADISON OLSZEWSKI Madison
JOHNNY RABE Johnny

Production Team

SCOTT WEINSTEIN Stage Director
DOTTIE BRIS-BOIS CST Producer
DOREEN SAYEGH CST Producer
SEAN KATHLEEN ROCKE Production Coordinator
ARI CLOUSE Stage Coordinator

A WELCOME TO OUR AUDIENCE

If we can help accommodate you during your visit, please speak with our House Manager. Please note that actors may make entrances and exits throughout the theater. For your safety, we ask that you keep aisles and doorways clear. We request that you refrain from taking any photography and other video or audio recording of this production. Thank you and enjoy the show.

Today's Music

William Bolcom (b. 1938)
***Graceful Ghost Rag* (arr. for String Quartet)**

Benjamin Britten (1913-1976)
Simple Symphony, Op. 4

Boisterous Bourrée
Playful Pizzicato
Frolicsome Finale

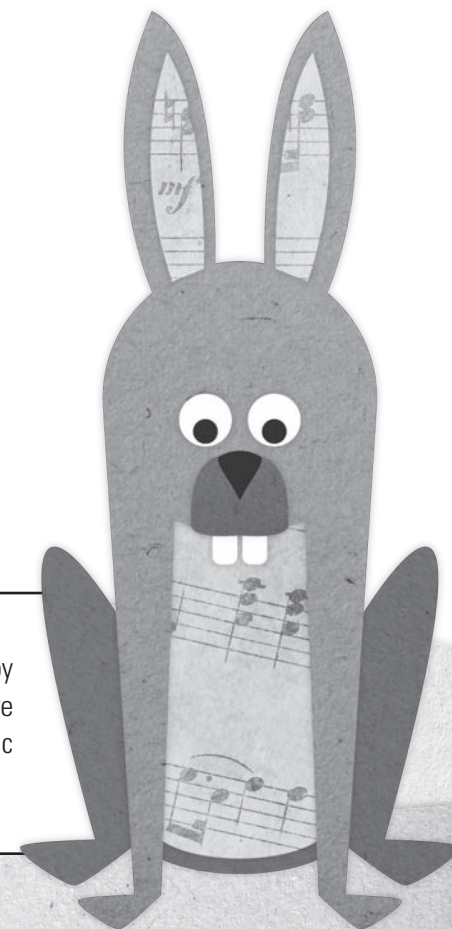
William Bolcom (b. 1938)
Fairy Tales

Silly March
The Fisherman and his Wife
Jorinda and Joringel
The Frog Prince
The Hare and the Hedgehog

CCM is grateful to Target® for its generous sponsorship of this event, especially Tracy Ronning.

DON'T FORGET!

Student musicians will be in the lobby between 11:00 and 11:25 a.m. They're here to perform for you and show you what music they are learning this year.



**WILLIAM BOLCOM** *Composer*

Born May 26, 1938, in Seattle, Washington

Named 2007 Composer of the Year by *Musical America*, and honored with multiple GRAMMY Awards for his ground-breaking setting of Blake's *Songs of Innocence and of Experience*, William Bolcom is a composer of cabaret songs, concertos, sonatas, operas, symphonies, and much more. He was awarded the 1988 Pulitzer Prize in Music for his *Twelve New Etudes* for piano. As a pianist he has recorded

for Advance, Jazzology, Musical Heritage, Nonesuch, Vox, and Omega. With his wife, mezzo-soprano Joan Morris, he has performed in concert for 40 years throughout the United States, Canada, and abroad. Bolcom taught composition at the University of Michigan from 1973 to 2008. Named a full professor in 1983, he was Chairman of the Composition Department from 1998 to 2003 and was named the Ross Lee Finney Distinguished University Professor of Composition in the fall of 1994. He retired from teaching in 2008. William Bolcom wrote *Fairy Tales* for a group, Trio Basso. The piece is based on the Trio's favorite fairy tales written by the Brothers Grimm. The music for these stories and their titles are: *Silly March*; *The Fisherman and His Wife*; *The Frog Prince*; *Jorinda and Joringel*; *The Hare and the Hedgehog*; *Silly March II*. *The Graceful Ghost Rag*, probably William Bolcom's most famous work, was written in memory of his father. The ghost of the title is a friendly and welcome spirit, and moves elegantly to Bolcom's sweetly softened ragtime rhythms.

**BENJAMIN BRITTEN** *Composer*

Born November 22, 1913 in Lowestoft, Suffolk, England

Died December 4, 1976 in Aldeburgh, Suffolk, England

Benjamin Britten showed a remarkable aptitude for piano as a child and started composing at age six. By the age of fourteen he had written ten piano sonatas, six string quartets, three piano suites, an oratorio and numerous songs, and was a nearly fully formed composer by the time he entered the Royal College of Music (RCM) in London

three years later. Britten left the RCM at the age of 20 to compose full time. During the 1930s, he wrote much incidental music and composed music for documentary films. As an ardent liberal and pacifist, he was concerned about England's imminent involvement in a second world war. So, he went to America and worked in New York and California for the next three years. After his return home in 1942, Britten received exemption from active military service and served instead by composing music for broadcasts and performing in hospitals, shelters and bombed-out villages for the duration of the war. He founded the Aldeburgh Festival in 1948. In 1972, Britten was diagnosed with a heart condition. Despite his poor health, he continued to compose until the end of his life. In June 1976 he was made a life peer with the title Baron Britten of Aldeburgh—the first British musician ever to be granted that honor. Widely known for his operas, symphonic compositions, vocal works, and scores for theater, radio and film, Britten also wrote several works for young audiences. Probably the best known is *The Young Person's Guide to the Orchestra*. Works which include children as performers are *Noyes Fludde* and *Let's Make an Opera*. The *Simple Symphony*, on today's program, is entirely based on material which the composer wrote between the ages of nine and twelve.

Abridged from Dr. Richard E. Rodda 2013.

Benjamin Britten's photo courtesy of www.britten100.org by Roland Haupt. William Bolcom's photo courtesy of Kathryn Conlin.

About Chamber Music

What is Chamber Music?

Chamber Music has been described as “the music of friends” because it uses a small group of musicians. Originally written to be performed in people's homes, today it is performed anywhere you can fit all of the musicians and their instruments.

Why is Chamber Music unique?

Each instrument plays its very own part. In a symphony you might have twenty violins playing the same notes, but in chamber music, even if you have two violins, each has its own part to play. The most important aspect of chamber music is communication.

Chamber Music is Storytelling!

Because there is only one musician per part in chamber music, each instrument's “voice” is telling a unique story. If you watch closely you will see that the musicians look at each other a lot. This is because the musicians decide together how their smaller stories should blend together in order to tell one larger story.

Artists...

say playing chamber music makes them better musicians.

Composers...

write chamber music in order to share their deepest emotions.

Audiences...

listen to chamber music because of the way the musical stories make them feel.





Founded in 1986, The Chicago Chamber Musicians (CCM) is currently celebrating its 27th season as a society of musicians and music devotees committed to building an internationally recognized chamber music institution in Chicago. Since its inception, CCM has launched a critically and popularly-acclaimed subscription series; a touring program; the annual *Family Concerts*; and a remarkable set of community service programs. In 2014, CCM will present a Spring Chamber Masterworks series and continues its long-running collaboration with the Chicago Department of Cultural Affairs and Special Events and 98.7 WFMT to present the free *First Monday Concert Series* in Preston Bradley Hall at the Chicago Cultural Center. A leader in new music, CCM has commissioned 18 new works. In September 2013, CCM released its latest recording *The Coming of Light* on the Summit label. In 2006, CCM's recording *Chamber Works for Winds and Strings by Mozart*, on the Summit label, was nominated for a 2007 GRAMMY Award, and CCM was recognized with an ABBY Award for Arts Management Excellence. In 2007, CCM was named Chamber Ensemble of the Year by the Illinois Council of Orchestras. In 2011, CCM launched *EncoreCCM.org*, an online archive of CCM recordings and program notes, free to the public, and the Office of the Mayor of Chicago proclaimed April "CCM Month." Annually, CCM shares the joy of chamber music with more than 300,000 radio listeners, audience members and students throughout Chicago.



Visit us online

www.chicagochambermusic.org



Friend us on Facebook

www.facebook.com/TheChicagoChamberMusicians



CCM YouTube Channel

www.youtube.com/chicagochamber

chicago
shakespeare
on navy pier theater



Chicago Shakespeare Theater (CST) is a global theatrical force, known for vibrant productions that reflect Shakespeare's genius for intricate storytelling, musicality of language and depth of feeling for the human condition.

For over two decades, CST has introduced the next generation to theatrical experience and the world of Shakespeare through our far-reaching education programs and civic partnerships. Each summer, fantastical musical adaptations from the fairytale canon delight 35,000 young audience members at CST's theater on Navy Pier, while a professional Shakespeare production tours free of charge to neighborhoods across the city, uniting more than 17,000 families with Chicago Shakespeare in the Parks. The Theater's comprehensive education initiatives, Team Shakespeare, impact an additional 40,000 students and teachers annually. Through this work, the Theater creates professional Shakespeare productions for young audiences, introduces drama-based classroom techniques to educators through year-round professional workshops, and unites students and educators to create their own performance on our stage.

Driven by the vitality with which Shakespeare moves the world, CST leads the community in introducing young people to the wonder of live performance. Today, its education programs have impacted the learning of over one million students, and one in four of our audience members is under eighteen years old. CST is proud to take an active role in empowering the next generation of literate, engaged cultural champions and creative minds.



Visit us online

www.chicagoshakes.com



Friend us on Facebook

www.facebook.com/chicagoshakespeare



Follow us on Twitter

@chicagoshakes

Word Scramble!

Use the description of the instrument to unscramble the word.

1. A black woodwind instrument played with a wooden reed on the mouthpiece

ianertcl _____

2. A brass instrument with a long slide

nomterob _____

3. One of the highest sounding string instruments played with a bow

inlvio _____

4. A silver woodwind instrument with a high, bright sound and many keys

eulft _____

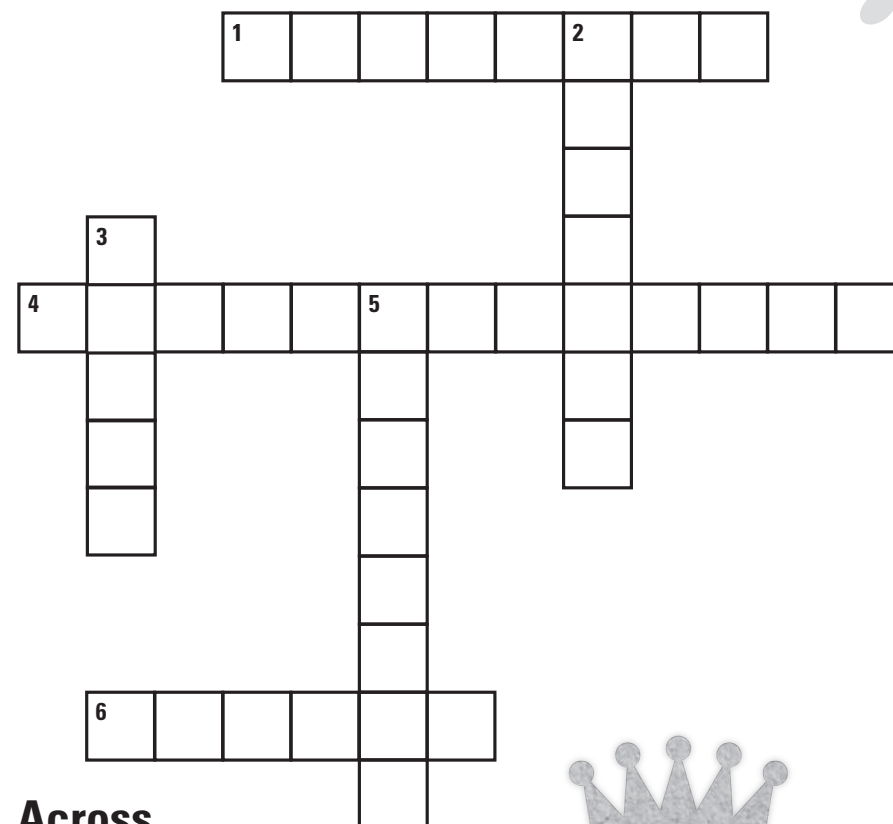
5. A bowed stringed instrument with four strings that is played while sitting

lcole _____



ANSWER KEY 1. clarinet 2. trombone 3. violin 4. flute 5. cello

Crossword!



Across

- 1 The _____ Grimm wrote the stories for today's performance
4 The most important aspect of chamber music
6 Sponsor of the Family Concerts

Down

- 2 Country where Benjamin Britten was born
3 Where you can find student musicians performing between shows today
5 Location of Chicago Shakespeare Theater (two words)



ANSWER KEY Across: 1. Brothers 4. Communication 6. Target Down: 2. England 3. Lobby 5. Navy Pier

Discography

Courtesy of Allen Linkowski

Britten: *Simple Symphony*

English Chamber Orchestra/Benjamin Britten; Decca 417509

Norwegian Chamber Orchestra/Iona Brown; Virgin 62179

Bolcom: *Graceful Ghost Rag (original version)*

Paul Jacobs, piano, Nonesuch 79006

Also suggested for children:

Adolphe: *Tyrannosaurus Sue: A Cretaceous Concerto*

Chicago Chamber Musicians; PollyRhythm Productions B000059MAQ

Adolphe: *Witches, Wizards, Spells and Elves: The Magic of Shakespeare*

Chicago Chamber Musicians; B000YB80DE

Britten: *Let's Make an Opera*

Coull Quartet; City of Birmingham Symphony Chorus and Youth Chorus/Simon Halsey Arthaus Musik 102107 (DVD)

Britten: *Noye's Fludde*

Soloists; English Opera Guild Chorus and Orchestra/Benjamin Britten; Decca 43697

Britten: *Young Person's Guide to the Orchestra*

London Symphony Orchestra/Benjamin Britten; Decca 417509

Chicago Symphony Orchestra/Seiji Ozawa; Sony 69100

Hugh Downs, narrator; Boston Pops Orchestra/Arthur Fielder; Sony 68131

Enjoy chamber music at home!

Visit CCM's digital music archive, EncoreCCM.org.

Not only does EncoreCCM.org feature free streaming audio of most concerts performed by CCM since 1989, but it also includes program notes and performer information—all of which is searchable, so you can find more chamber music that you like.



"Merit School of Music is one of my favorite places on Earth. I've seen its work through visiting there, but also through many of their graduates. What it does is to not let talent escape, because it has the broadest net. At its most lofty level, to its most basic response to the needs of a community, it is such an incredible organization."

— Yo-Yo Ma
Merit National Advisory Board Member

Visit www.meritmusic.org to find out how you can make a difference in the lives of Merit students.



Merit School of Music
Joy Faith Knapp Music Center
38 S. Peoria St., Chicago IL 60607
312.786.9428

www.meritmusic.org

Autographs

You can meet the musicians and actors in the lobby from 11:00 to 11:25 a.m.



JOSEPH GENUALDI Violin



DOUGLAS JOHNSON Double Bass



CHENG-HOU LEE Cello



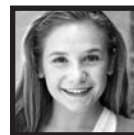
RAMI SOLOMONOW Viola



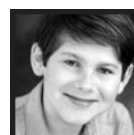
MATHIAS TACKE Violin



BILL LARKIN Narrator



MADISON OLSZEWSKI Madison



JOHNNY RABE Johnny

Biographies



JOSEPH GENUALDI

(Violin, CCM Ensemble Member) is professor of violin at the University of Missouri–Kansas City Conservatory of Music and Dance and is a founding member of CCM. Joseph began formal training with Broadus Erle. After graduating from North Carolina School of the Arts, he was admitted to the Curtis Institute of Music, where he studied with Jascha Brodsky and Ivan Galamian and formed a life-long relationship with Felix Galimir. At age 22, Joseph became associate concertmaster of the San Francisco Symphony. He was a founding member of the Muir Quartet, which won the first prizes of Le Concor's D'Evian and the Naumburg Award. Joseph has performed extensively at festivals including Marlboro, Spoleto (Italy), and Ravinia. Joseph has served on the faculties of Yale University, DePaul University, and University of North Carolina School of the Arts. As artistic director of CCM for 17 years, he worked closely with composers such as John Corigliano, Pierre Boulez, Joan Tower, Ned Rorem, William Bolcom, Bernard Rands, and Mason Bates.



DOUGLAS JOHNSON

(Double Bass), double bassist and composer, earned his bachelor's degree in music performance from Northwestern University, studying with Jeff Bradetich. He is also an alumnus of several music festivals, including the Bach Aria Festival and the Tanglewood Music Festival, and formerly served as Associate Principal Bass with the Honolulu Symphony. Doug is active in the orchestral, chamber, and alternative music scenes in the Chicago area. In chamber music circles, he has played with the Chicago Chamber Musicians, C.U.B.E. Ensemble, Accessible Contemporary Music (ACM), and members of Eighth Blackbird and the Pacifica Quartet. He is also bandleader of the progressive improvisational group, Gunnelpumpers, and has produced their four commercial releases, all released since 2010. Doug composed and performed one of River North Chicago Dance Company's signature pieces, *Reality of Dreamer*, wrote an original 14-minute chamber music score for ACM's Sound of Silent Film in 2010,

and premiered the first completed movement of his concerto for double bass and orchestra in 2012.



CHENG-HOU LEE

(Cello), a native of Taiwan, received both the bachelor's and master's degrees from the Juilliard School and a master's degree in chamber music at Rice University. Mr. Lee has worked with world-renowned artists and chamber ensembles. He is a recipient of a career grant from the Quanta Computer Education Foundation, and was a full-scholarship student at the New England Conservatory for his Doctor of Musical Arts degree. He has made solo and chamber music appearances throughout the United States, and also toured in Europe and Asia. Recently, he has given solo recitals at the Dame Myra Hess Memorial Concerts Series and the Susa Marshall Memorial Concert Series. Cheng-Hou is currently the cellist of the Avalon Quartet, which in August 2007 succeeded the world-renowned Vermeer Quartet as the quartet-in-residence at Northern Illinois University. During summers, the quartet is on faculty at festivals such as the Interlochen Center for the Arts' Advanced String Quartet program, the Icicle Creek Chamber Music Festival, and the Hot Springs Festival.



RAMI SOLOMONOW

(Viola, CCM Ensemble Member) graduated from the Rubin Academy of Music in Tel-Aviv, Israel, where he studied with Oedoen Partos. A member of the Israel Chamber Orchestra until 1972, Rami received prizes in viola and chamber music from the American-Israel Foundation. In 1973, Rami moved to the US, where he studied with Shmuel Ashkenasi at Northern Illinois University. Principal violist of the Lyric Opera of Chicago from 1974 to 1995, Rami was a founding member of the Chicago String Quartet, the quartet in residence at DePaul University and Taos School of Music until 2004. Rami has performed as a soloist and chamber musician in the US, Israel, Japan, and South America. A member of The Chicago Chamber Musicians since 1995, Rami was nominated for a GRAMMY Award as part

of CCM's GRAMMY-nominated CD Chamber Works for Winds and Strings by Mozart. Rami is a faculty member at Bowdoin College in Maine during the summers and at DePaul University throughout the school year, where he has served since 1981.



MATHIAS TACKE

(Violin) was the second violinist of the acclaimed Vermeer Quartet from 1992 until 2007. With the Vermeer Quartet, Mathias gave performances in practically all of the most prestigious festivals, including Tanglewood, Taos, Ravinia, South Bank, Lucerne, Berlin, Schleswig-Holstein, and Edinburgh, to name only a few. Three of the Vermeer Quartet recordings were nominated for the GRAMMY Award. A native of Germany, he studied with Ernst Mayer-Schiering in Detmold, Germany, with Emanuel Hurwitz and David Takeno in London, and with Sandor Vegh in Prussia Cove, Cornwall. He won first prize in the German National Youth Competition and graduated from the Musikakademie Detmold, where he was later appointed to the faculty. From 1983 to 1992 Mathias was a member of the Ensemble Modern Frankfurt, one of the most important professional groups specializing in the performance of contemporary music. He is currently professor of violin and chamber music at Northern Illinois University and guest lecturer for string chamber music at Northwestern University.



SCOTT WEINSTEIN

(Stage Director) returns to Chicago Shakespeare Theater, where his assistant directing credits include *Murder for Two*, *The Taming of the Shrew*, and *The School for Lies*. Other Chicago credits include: *She Kills Monsters* (Buzz22 Chicago, Steppenwolf Garage); *A Doll's House* (Buzz22 Chicago); *25th Annual Putnam County Spelling Bee* (Griffin Theatre); and *All-American* (Redtwist Theatre). Regional credits include: *Baristas* (New York International Fringe Festival); *Ampersand* (Bloomington Playwrights Project); and *Murder for Two* (Adirondack Theatre Festival, Hangar Theatre, 42nd Street Moon). Scott is currently the associate director for the national tour

and Chicago productions of *Million Dollar Quartet*. He is the recipient of a Berkshire Theatre Festival Directing Fellowship and a Stage Directors and Choreographers Society Observership. Scott is the co-artistic director of Buzz22 Chicago, an associate member of the Stage Directors and Choreographers Society, and a graduate of Northwestern University.



BILL LARKIN

(Narrator) returns to Chicago Shakespeare Theater, where his credits include *Disney's Aladdin* and CST family productions of *The Carnival of the Animals*, *Babar the Little Elephant* and *Classical Idol!* Other Chicago credits include: *A Class Act* (Porchlight Music Theatre, Jeff Award); *The 25th Annual Putnam County Spelling Bee* (Drury Lane Theatre); and *Mere Fluff* (Annoyance Theatre). Film credits include: *No Ordinary Hero: the Super-Deafy Movie*. TV credits include *Premium Blend* (Comedy Central).



MADISON OLSZEWSKI

(Madison) returns to Chicago Shakespeare Theater, where she appeared in *Sunday in the Park with George*. Other Chicago credits include: *Mary Poppins*, *White Christmas* (Marriott Theatre); and *Annie* (Schaumburg On Stage). Madison is a freshman at Chicago Academy for the Arts and dances under the direction of Ellen Werksman for Midwest Dance Collective.



JOHNNY RABE

(Johnny) makes his Chicago Shakespeare Theater debut. Other Chicago credits include: *Mary Poppins*, *For the Boys*, *The Music Man* (Marriott Theatre); *Oliver!* (Drury Lane Theatre); *The Music Man* (Paramount Theatre); *Shadowlands* and *The Wizard of Oz* (Provision Theater). Broadway credits include: *A Christmas Story, the Musical* (Lunt-Fontanne Theatre). National tours include: *A Christmas Story, the Musical*. Regional credits include: *Secondhand Lions* (5th Avenue Theatre).

ENSEMBLE

MENG-CHIEH LIU
Artistic Director

Michael Henoch *Oboe*
Larry Combs *Clarinet*
Dennis Michel *Bassoon*
Gail Williams *Horn*
Barbara Butler *Trumpet*
Charles Geyer *Trumpet*
Michael Mulcahy *Trombone*
Joseph Genualdi *Violin*
Jasmine Lin *Violin*
Rami Solomonow *Viola*
Clancy Newman *Cello*
Bradley Opland *Double bass*
Meng-Chieh Liu *Piano*
CCM BRASS

Emerita
Deborah Sobol *Piano*

Community Engagement
Ensemble
Quintet Attacca

BOARD OF DIRECTORS

MICHAEL WOOLEVER
Chair

Marilynn J. Cason
Paula D'Angelo
Katherine Erwin
Charles Geyer
Joel L. Handelman
Leo M. Henikoff
Daniel Knaus
Eva F. Lichtenberg
Gerard Nussbaum
James C. Sheinin
Karen Zupko

Life Directors
Constance Dickinson
Peter Dickinson
John Kirk
Robert Knight
Richard H. Schnadig
Louise K. Smith
Emory Williams

Honorary Directors
Norman Goldring
Joan W. Harris
Mary Ann Judy

STAFF

KATHLEEN BUTERA
Executive Director

LISA CONNOLLY
Director of Development

KERI SHANE
Marketing Manager

TINA QI
Interim Artistic and
Operations Coordinator

JEAN MCCULLOUGH
Office Manager/Box Office

ELLEN GIRVIN
Teaching Artist

ANDY OWENS, NADESIGNLAB
Graphic Designer

KEMPER FELLOWS

EMILY MANNHEIMER
Gala and Development

CHRISTINA RIEMER
Marketing

VOLUNTEERS

LAWRENCE KLEVAN
Development

KATHERINE GLUCK
DANA MORRISON
JEREMY SMITH
Marketing

CAITLIN SCHNECKE
Community Engagement

BOARD OF DIRECTORS

Sheli Z. Rosenberg*
Chair

Eric Q. Strickland*
Treasurer

Steven J. Solomon*
Deputy Chair

Frank D. Ballantine
Brit J. Bartter*
Thomas L. Brown
Allan E. Bulley III
Patrick R. Daley
Brian W. Duwe
Philip L. Engel
Jeanne B. Ettelson
Harve A. Ferrill

Sonja H. Fischer
Richard J. Franke
Barbara Gaines*
C. Gary Gerst*
M. Hill Hammock*
Kathryn J. Hayley
Criss Henderson*
William L. Hood, Jr.
Stewart S. Hudnut
William R. Jentes*
Jack L. Karp
John P. Keller
Richard A. Kent
Barbara Malott Kizziah
Edward A. Langan
Chase Collins Levey
Anna Livingston
Renetta E. McCann

Raymond F. McCaskey*
Robert G. McLennan
Jess E. Merten
Dennis Olis
Mark S. Ouweleen*
Carleton D. Pearl
Sheila A. Penrose*
Judith Pierpont
Paulith A. Pike
Stephanie Pope
Richard W. Porter
John Rau
Nazneen Razi
Glenn R. Richter*
Mark E. Rose
John W. Rowe*
Robert Ryan
Carole B. Segal

Brittany A. Smith
Kathleen Kelly Spear
Harvey J. Struthers, Jr.
Eileen Sweeney
Sheila G. Taltan
Marilynn J. Thoma*
Gayle R. Tilles
William J. Tomazin
Donna Van Eekeren*
Priscilla A. (Pam) Walter*
Ava D. Youngblood

*denotes Executive
Committee members

STAFF

BARBARA GAINES
ARTISTIC DIRECTOR

ARTISTIC
RICK BOYNTON
Creative Producer

GARY GRIFFIN
Associate Artistic Director

BOB MASON
Artistic Associate/
Casting Director

HEATHER SCHMUCKER
Associate Producer

MARISSA SCHWARTZ
Producing Associate

LAURA DURHAM
Casting Assistant

JEREMY EHLINGER
Casting Intern

EDUCATION

MARILYN J. HALPERIN
Director of Education and
Communications
Ray and Judy McCaskey
Education Chair

CRISS HENDERSON
EXECUTIVE DIRECTOR

JASON HARRINGTON
Education Outreach
Manager

MOLLY TOPPER
Learning Programs
Manager

EVELYN JACOBY
Education Intern

ADMINISTRATION

LINDA ORELLANA
Director of Finance

DANIEL J. HESS
Company Manager

JEANNE DEVORE
Technology Manager

ANDREA CRAIN
Database Administrator

DOTTIE BRIS-BOIS
BRETT ELLIOTT
MELISSA FAGAN
DOREEN SAYEGH
Arts Leadership Fellows

ALANA RYBAK
Assistant Director of Finance

DAN GRYZA
KATHRYN PAYNE
Accounting Associates

ALYSSE HUNTER
Accounts Payable Manager

JILL FENSTERMAKER
Executive Assistant

ADVANCEMENT

BROOKE FLANAGAN
Director of Institutional
Advancement

MELISSA COLLINS
Associate Director of
Advancement

HILARY ODOM
Senior Advancement Officer

MARGARET REEDER
Major Gifts Officer

KRISTEN CARUSO
Advancement Manager/
Board Liaison

SAMANTHA DECKER
Institutional Relations
Coordinator

KATIE GROGAN
Stewardship and
Events Coordinator

CHRISTOPHER PAZDERNIK
Annual Fund Coordinator

TARA SMITHBERGER
Donor Relations Coordinator

KATHERINE TRAINOR
Advancement Intern

MARKETING

ALIDA SZABO
Director of Audience
Development

JULIE STANTON
Marketing Director

CHICAGO SHAKESPEARE THEATER STAFF *(continued)*

KIARA KINCHELOE
Marketing Assistant

HANNAH KENNEDY
Public Relations Assistant

TONY ADAMS
Digital Assets Assistant

KENNETH KEACHER
Marketing Assistant/
Office Administrator

JENNIFER JONES
RYAN WENZEL
Marketing Interns

PRODUCTION

CHRIS PLEVIN
Director of Production

ERICA L. SANDVIG
Assistant Director of
Production

MERYN DALY
Production Office Manager

SEAN KATHLEEN ROCKE
Production Management
Apprentice

STAGE MANAGEMENT

DEBORAH ACKER
Stage Manager/
Associate Producer

ARI CLOUSE
Stage Coordinator

SCENERY

EDWARD LEAHY
Technical Director

MATTHEW ROHNER
ROBERT L. WILSON
Assistant Technical Directors

BRUCE COOPER
Stage Crew Supervisor

KATIE MCBEE
Stage Crew Apprentice

WIL DELEGUARDIA
Technical Direction Intern

COSTUMES

RYAN MAGNUSON
Costume Shop Manager

CATHY TANTILLO
Costume Design Assistant

EMILY ROSE GOSS
Costume Shop Assistant/
Rental Manager

MELISSA BOCHAT
Crafts Supervisor

ELIZABETH COFFIN
Costume Apprentice

ELECTRICS

KRISTOF LEOPOLD
Lighting Supervisor

JOAN E. CLAUSSEN
House Electrician

ERIC BRANSON
Light Board Programmer

CYPRESS STAEELIN
Lighting Intern

SOUND

JAMES SAVAGE
Sound Master

CRISTY TROIA
CST Sound Engineer

PAUL PERRY
Sound Engineer

ALEX ROMBERG
Sound Intern

WIGS AND MAKE-UP

MELISSA VEAL
Head of Wigs and Make-up

WHITNEY MUELLER
Wig and Make-up Assistant

SIOBIAN JONES
Wig and Make-up Intern

PROPERTIES

AMY PETER
Properties Master

CASSANDRA WESTOVER
Assistant Properties Master

DAN NURCZYK
Properties Stage Crew

HALEY BORODINE
BRONWYN SCHLAEFER
Properties Interns

OPERATIONS/FACILITIES

SUSAN KNILL
Theater/Facility Manager

DANIEL LOPEZ
Facilities Assistant

ELLIOTT LACEY
Custodial Supervisor

MARIBEL CUEVAS
ISRAEL ESTRADA
NICOLAS RIVERA
Custodial Assistants

TICKETING, GUEST SERVICES AND EVENTS

JEFFREY CASS
Manager of Ticketing and
Guest Services

MAKEDA COHRAN
Events Manager

ZACK HAMACHER
KENDALL MONAGHAN
Box Office Supervisors

WILL CAVEDO
SETH HARMAN
LAURA MIKULSKI
Front of House Supervisors

MARK PARKER
Concessions Supervisor

BETSY BEAMS
SHELLY GODEFRIN
KATIE NIXON
MAURA PERSON
Lead Guest Services
Associates

PHIL BRANKIN
ALDO BOTALLA
EVAN CARTWRIGHT
ANTHONY DUCKSWORTH
MATTHEW HULTGREN
ASHLEY MISKOFF
LAUREN NIX
HAILEY PALMER
SHARAINA TURNAGE
MADELINE WAKLEY
ALAN WEUSTHOFF
Guest Services Associates

CHRIS SIMEK
SHARON AND
TOM MCLEAN
Saints' Volunteer Usher
Coordinators

CALL CENTER

GREG HUGHES
Call Center Manager

ALEX HIGGIN-HOUSER
Call Center Supervisor

NICK KERN
Group Sales Coordinator

DAVE TOROPOV
Administrative Coordinator

AMY LEIGH ABELSON
PATRICK BOYD
CODY BRIDGES
TYLER DAILEY
KRAIG KELSEY
MAGGIE MITCHELL
BETH SPATZ
TAMAR WESTPHAL
AMBER WRIGHT
Call Center Representatives



Target® and CCM are both dedicated to education and building community through cultural awareness. CCM showcases its dedication through a variety of education and outreach programs.

Community Engagement Ensemble and Concerts for Schools

The Community Engagement ensemble—Quintet Attacca—focuses on planning and performing Concerts for Schools. CCM offers 15–20 concerts a season through this program and works with Communities in Schools of Chicago (CISC) to identify Chicago public elementary schools for participation.

School Residency Program

Offers long-term classroom-based instruction at two Chicago Public Schools annually (2013/2014 schools are Genevieve Melody Elementary School and Philip D. Armour Elementary School). The curriculum features weekly sessions with CCM Teaching Artists, hands-on recorder lessons, performance opportunities, and in-school and concert hall performances by professional chamber music ensembles.

Free First Monday Series Concerts

CCM performs free, monthly noontime concerts, featuring performances under the Tiffany Dome in Preston Bradley Hall at the Chicago Cultural Center, which are also broadcast live on 98.7 WFMT. Audiences average 350 people, including professionals, seniors, and college students. The First Monday Series offers easy access to great music at no cost.

Student Community Concerts

The students involved in CCM's School Residency Program perform prior to CCM's May First Monday Concert at the Chicago Cultural Center and at the Merit School of Music at the end of the school year.

If you want to get involved in a music education program, please visit our table in the lobby!

Every kid deserves
the thrill of knowing
the answer.

That's why Target is on track to give
\$1 BILLION FOR EDUCATION
by the end of 2015.



Learn about the difference this support is making for
kids nationwide. Target.com/Education