

#SIXCHICAGO



ARAGON  
BOLEYN  
SEYMOUR  
CLEVES  
HOWARD  
PARR

*Aragon* ♥

*Boleyn* \*

*Howard*

*Parr* ♥

# SIX



DIVORCED ★ BEHEADED  
LIVE IN CONCERT!

*Seymour* ♥

*Cleves* #

chicago  
shakespeare theater  
on navy pier

# Contents



Chicago Shakespeare Theater  
800 E. Grand on Navy Pier  
Chicago, Illinois 60611

312.595.5600  
[www.chicagoshakes.com](http://www.chicagoshakes.com)

©2019  
Chicago Shakespeare Theater  
All rights reserved.

ARTISTIC DIRECTOR  
CARL AND MARILYNN THOMA CHAIR:  
Barbara Gaines  
EXECUTIVE DIRECTOR:  
Criss Henderson

PICTURED ABOVE:  
The company of *SIX*  
PHOTO BY: Jeff Sciortino

**On the Boards** 8  
*A selection of notable CST  
events, plays, and players*

**A Conversation  
with the Creators** 12

**Cast** 19

**A Little Bit of Her-Story** 20

**Profiles** 22

## IT'S THE MAGIC

*that went into  
making it happen.*



**FOOD & THOUGHT**  
—CATERING GROUP—

[FFTCHICAGO.COM](http://FFTCHICAGO.COM)

*Proud to be a partner with  
Chicago Shakespeare Theater*



"O earth, I will  
befriend thee."  
—W.S.



Beginning July 6 follow the  
Yellow Brick Road to Navy Pier  
for 75 minutes of musical magic

# THE WIZARD OF OZ

by **L. FRANK BAUM**  
with music and lyrics by  
**HAROLD ARLEN** and **E.Y. HARBURG**  
adapted by **JOHN KANE**  
directed by **BRIAN HILL**  
choreographed by **KENNY INGRAM**

**\$19**  
TICKETS FOR  
CHILDREN  
(12 & under)  
when you book a  
group of 10+

chicago  
shakespeare theater  
on navy pier

**312.595.5600**  
chicagoshakes.com

## Welcome



### DEAR FRIENDS,

This year marks the twentieth anniversary of our move to Navy Pier. During our inaugural season in what is now our artistic home, we presented seven productions across our two theaters. We have since grown exponentially, adding The Yard at Chicago Shakespeare, building a nationally recognized education program, curating a vibrant WorldStage Series, launching new plays and musicals, and expanding our annual schedule to feature as many as twenty productions.

Highlighting our commitment to new work, new voices, and artists who redesign traditional storytelling paradigms is *SIX*, an electrifying new pop musical by Toby Marlow and Lucy Moss. Our newest venue, The Yard at Chicago Shakespeare, is the perfect home for this genre-defying work, directed by Moss and Jamie Armitage. What began as a small project for the Edinburgh Festival Fringe between writers and friends Marlow and Moss while in their final year at Cambridge has since taken the West End by storm, garnering five Olivier Award nominations. Through powerhouse pop, *SIX* gives voice to six often overlooked queens—the wives of King Henry VIII. Aragon, Boleyn, Seymour, Cleves, Howard, and Parr unite to reclaim their places in history through an exuberant celebration of female empowerment.

While *SIX* plays in The Yard, Shakespeare's timeless 400-year-old masterpiece *Hamlet*, staged by Artistic Director Barbara Gaines, plays in the Courtyard Theater. For our younger audiences this summer, we will produce a beloved family musical, *The Wizard of Oz*, on Navy Pier. At the same time, our abridged production of *The Comedy of Errors* will tour to neighborhood parks across the city, free for all, in our eighth year of Chicago Shakespeare in the Parks.

We're thrilled to have you here today to celebrate the North American Premiere of *SIX*. Whether you're a regular visitor or it is your first time with us, we hope we'll see you again soon! ■

**Barbara Gaines**  
Artistic Director  
Carl and Marilynn Thoma Chair

**Criss Henderson**  
Executive Director

**Steve Solomon**  
Chair, Board of Directors



# BROADWAY IN CHICAGO

## SIX SHOWS FOR AS LOW AS \$140



BROADWAYINCHICAGO.COM • SUBSCRIPTION 312.977.1717 • GROUPS 312.977.1710



Cadillac Palace



Playhouse Theatre

Auditorium Theatre

Cambria

Hampton

The Peninsula

## About CST

Under the leadership of Artistic Director Barbara Gaines and Executive Director Criss Henderson, Chicago Shakespeare has redefined what a great American Shakespeare theater can be—a company that defies theatrical category. This Regional Tony Award-winning theater's year-round season features as many as twenty productions and 650 performances—including plays, musicals, world premieres, family programming, and presentations from around the globe. The work is enjoyed by 225,000 audience members annually, with one in four under the age of eighteen. Chicago Shakespeare is the city's leading presenter of international work, and in touring its own productions across five continents has garnered multiple accolades, including the prestigious Laurence Olivier Award. Emblematic of its role as a global theater, the company spearheaded Shakespeare 400 Chicago, celebrating Shakespeare's legacy in a citywide, yearlong international arts and culture festival, which engaged more than one million people. The Theater's nationally acclaimed arts in literacy programs support the work of English and drama teachers, and bring Shakespeare to life on stage for tens of thousands of their students each school year. Over the summer, the company tours a professional production of Shakespeare's work, free for all, to neighborhood parks across the city. In 2017 the Theater unveiled The Yard at Chicago Shakespeare—with its innovative design that has changed the shape of theater architecture. Together with the Jentes Family Courtyard Theater and the Thoma Theater Upstairs, The Yard positions Chicago Shakespeare as the city's most versatile performing arts center. ■

### BOARD OF DIRECTORS

Steven J. Solomon\*  
*Chair*

Paulita A. Pike\*  
*Treasurer*

Frank D. Ballantine  
John Blazey  
Stephen A. Brodsky  
Thomas L. Brown  
Allan E. Bulley III  
Clive Christison  
Patrick R. Daley  
Brian W. Duwe  
Philip L. Engel ♦  
Jeanne B. Ettelson  
Kevin R. Evanich  
Harve A. Ferrill  
Sonja Fischer  
Richard J. Franke  
Barbara Gaines\*  
C. Gary Gerst ♦  
Marguerite H. Griffin

M. Hill Hammock ♦\*  
Kathryn J. Hayley  
Criss Henderson\*  
Stewart S. Hudnut  
William R. Jentes\*  
John P. Keller ♦  
Christie B. Kelly  
Richard A. Kent  
Barbara Malott Kizziah  
Chase Collins Levey  
Anna Livingston  
Judy Loseff  
Renetta McCann  
Raymond F. McCaskey ♦\*  
Robert G. McLennan  
Jess E. Merten  
Linda Myers  
Madhavan Nayar  
Christopher O'Brien  
Dennis Olis\*  
Mark S. Ouweleen\*

Judith Pierpont  
Richard W. Porter\*  
John Rau  
Nazneen Razi\*  
Sheli Z. Rosenberg ♦\*  
Robert Ryan  
Carole Segal  
Eric Q. Strickland\*  
Harvey J. Struthers, Jr.  
Sheila G. Talton  
Marilynn J. Thoma\*  
Gayle R. Tilles  
William J. Tomazin, Jr.  
Donna Van Eekeren  
Pallavi Verma  
Priscilla A. (Pam) Walter ♦\*  
Ray Whitacre

\*Denotes Executive Committee Members

♦Denotes Former Board Chairs

# On the Boards



The expansive 2019/20 Season offers a series of inspired productions. This fall, enjoy the North American Premiere of *The King's Speech*, based on the remarkable true story that inspired the Academy Award-winning film. Shakespeare's enduring genius ignites *Romeo and Juliet*, one of the most famous love stories of all time. Hit songs from The Beatles mix with Shakespeare's poetry in the joyous romantic comedy *As You Like It*. Tony Award-nominated composer Paul Gordon transforms Jane Austen's *Emma* into a charming musical, and a host of artists from around the world fill the Theater's stages. A variety of Subscription packages—designed for every taste, schedule, and budget—are now on sale. More than just a few dates on your calendar, this total artistic experience celebrates the theatrical innovation and powerful performances that you can expect with every visit to Chicago Shakespeare. Learn more at [www.chicagoshakes.com/subscribe](http://www.chicagoshakes.com/subscribe).



The annual free Chicago Shakespeare in the Parks tour provides the perfect opportunity to explore a new neighborhood this summer. From Calumet to Loyola, Ping Tom to Columbus, Chicago Shakespeare is bringing Shakespeare's boisterous farce, *The Comedy of Errors*, directed by David H. Bell, to parks across the city of Chicago. This beloved summertime tradition will feature twenty-five performances, from July 18 to August 18, in eighteen of Chicago's neighborhoods. *The Comedy of Errors* tells the tale of a young man and his lifelong servant and companion searching the world over for their twins, lost in infancy. Everywhere they go, strangers insist that they're old friends. Mistaken identities abound, until chaos at last gives way to clarity in this comedy filled with equal measure of mayhem, madness, and heart. For tour locations and dates, visit [www.chicagoshakes.com/parks](http://www.chicagoshakes.com/parks).



In 2000 Chicago Shakespeare launched its WorldStage Series, a program dedicated to fostering global artistic dialogue and bringing boundary-pushing international work to Chicago. The Theater has since welcomed more than 1,000 artists from twenty-three countries. Next fall, South Africa's Isango Ensemble brings *A Man of Good Hope*. Vividly told through music and dance steeped in African traditions, the play illuminates a young Somali refugee's unflinching hope throughout his odyssey across a continent. Makuyeika Theatre Collective presents *Andares*, which chronicles the lives of indigenous youth in México—and the realities of merging modern life with tradition—devised from personal anecdotes, ancestral myths, and traditional art forms. And in spring, the world renowned Royal Shakespeare Company returns to Chicago for the first time in 25 years with a signature Shakespeare production.



From rain to blood to mud to rapid quick-changes, Dresser Jess Kenyon deals with it all backstage, ensuring that actors are cleaned up and in all the right costume pieces for their next entrance. To honor Jess's work on CST's wardrobe team, she was presented with the seventeenth annual Hurckes Award. Created by Dick Hurckes, a founding member of the Theater's Board, and his late wife Lou, the Hurckes Award supports the work and ongoing professional development of the artisans and technicians who create the worlds onstage, yet rarely receive this type of public recognition. Director of Production Chris Plevin explains: "Jess brings an almost incomprehensible wizardry to her work. Her technical skillset in her craft allows our productions to unfold seamlessly, with actors moving from scene to scene with seemingly limitless flexibility—and the audience oblivious to the miracles she is working behind the scenes."

From left: Courtyard Theater; Chicago Shakespeare in the Parks at Polk Bros Park; The Company of Isango Ensemble's *A Man of Good Hope*; Jess Kenyon, Kate Hurckes Arias, and Gill Arias. photos by Liz Lauren, J Laurn Photography, and James Steinkamp, Steinkamp Photography.



# BROADWAY IN CHICAGO



**Falsettos**

MUSIC & LYRICS BY William Finn  
BOOK BY William Finn & James Lapine  
DIRECTION BY James Lapine  
CHOREOGRAPHY BY Spencer Liff

Characters: UNLIKELY LOVERS, HERVOUS WRECKS, TIGHT-KNIT FAMILY, SHORT INSOMNIACS, THE LEISURE NEXT DOOR, CORDONIA.

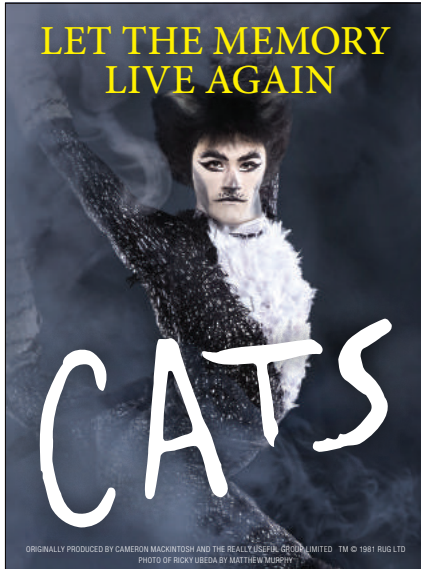
MAY 28 – JUNE 9, 2019



**Les Misérables**

THE MUSICAL PHENOMENON

JULY 9 – 27, 2019



LET THE MEMORY LIVE AGAIN

**CATS**

ORIGINAL PRODUCED BY CAMERON MACKINTOSH AND THE REALITY GROUP. TM © 1981 RUG LTD. PHOTO OF RICKY UBERA BY MATTHEW WILSON.

JULY 16 – AUGUST 4, 2019



WINNER!  
BEST MUSICAL  
ALL ACROSS NORTH AMERICA

**COME FROM AWAY**

THE REMARKABLE TRUE STORY OF THE SMALL TOWN THAT WELCOMED THE WORLD

Critics Pick

JULY 30 – AUGUST 18, 2019

BROADWAYINCHICAGO.COM • SUBSCRIPTION 312.977.1717 • GROUPS 312.977.1710



SCENIC VIEWS  
AND THE  
FRESHEST  
SEAFOOD

Bravo! Bravo! Attention all Chicago Shakespeare Theater patrons. Join us at Riva today and you can choose from our 3-course, specially priced prix fixe menu, or get 20% off our regular menu.

**RIVA**  
CRABHOUSE  
• NAVY PIER •

Call 312.644.7482 for details. You MUST present your ticket to receive this special offer.  
RivaNavyPier.com

f @RivaCrabHouse



*Cold nose,  
warm hearts.*

**Humans love it here too.**

Since we moved to Montgomery Place, there's so much to do. Places to explore. And busy, active people who still take time to scratch behind my ears. I make new best friends every day. **Make our place your place**



Montgomery Place

The Cultural Center of East Hyde Park

5550 South Shore Drive • Chicago, IL 60637

773-753-4100 • MontgomeryPlace.org



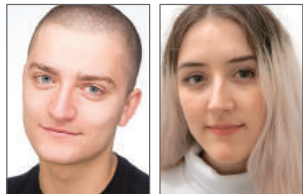
A not-for-profit community for people 62-plus

# A Conversation with the Creators

Visit [chicagoshakes.com](http://chicagoshakes.com) to explore more ideas and stories behind the art on CST's stages.

## SIX

- WRITTEN BY TOBY MARLOW AND LUCY MOSS
- DIRECTED BY LUCY MOSS AND JAMIE ARMITAGE
- THE YARD AT CHICAGO SHAKESPEARE
- 312.595.5600
- [WWW.CHICAGOSHAKES.COM](http://WWW.CHICAGOSHAKES.COM)



Creators of *SIX* Toby Marlow and Lucy Moss

### Tell us about the story of *SIX*. What should we expect?

**Lucy Moss:** *SIX* is told by the wives of Henry VIII—but as a girl group performing a pop concert for an audience. They're sick and tired of everyone arguing over who's the most important wife, and the Queens decide to hold a competition between them: whoever had the worst time in her marriage to Henry VIII will be crowned the leading lady of the girl group! The pop concert consists of each Queen singing a solo in order to stake a claim for the spotlight—but, without wanting to give too much away, not everything goes according to plan. . . .

### Were there any challenges in adapting these historic women's stories into contemporary pop music?

**Toby Marlow:** When we started writing the songs, it was tricky to find a balance between trying to make them sound like actual pop songs while also achieving the same level of storytelling and humor as our favorite musical theater songs. Given that chart pop songs are usually fairly similar in their structures, we wanted to be sure to avoid the score sounding too repetitive. However, we soon found that the repetitive nature of pop music often proved really useful in our storytelling, such as in Katherine Howard's song, 'All You Wanna Do,' in which we gradually subvert the meaning of the chorus throughout the song. At the start, it's flirtatious and cheeky but, by the end, the chorus becomes a lament about her repeated abuse at the hands of the men in her life. With pop music there are so many tropes and expectations, and so it was really fun during the writing process to play around with those.

### How did you make them into six unique characters?

**Lucy:** We looked into their biographies, watched documentaries, and picked out the bits of their lives that would resonate for audiences today. One of our major resources was Antonia Fraser's *The Wives of Henry VIII*.



Fraser focuses on the full life of each woman, not just their stories leading up to—and, for three of them, subsequent to—their marriage to the king. Her book was instrumental in helping us separate each Queen's identity from Henry—especially for his last wife, Catherine Parr, who had an interesting life, of which her marriage to Henry was only a very small part. Fraser also shares loads of small details that found their way into *SIX*. For example, we loved one of Anne Boleyn's mottos: 'Let them grumble; that is how it's going to be.' It felt like the Renaissance version of saying 'Sorry, not sorry,' so we snuck that version of the original motto into the hook of her song. We also enjoyed the descriptions of Anna of Cleves as a divorcée developing a penchant for drinking, hunting, and partying. Those details had a huge influence on how we wrote her song.

### What inspired you to write a musical that tells women's stories?

**Lucy:** Toby and I have loads of female friends who are incredible performers. But they don't often have opportunities to show how funny or brilliant they are because many musicals don't have complex, comedic parts for women. In our first writing session, we wrote a 'manifesto'—our *SIX* Six-Point Plan—of what we were setting out to do. One component was about writing great parts for women. Another was to highlight the parallels we saw between the Queens' experiences with those of women today.

### It felt like the Renaissance version of saying 'Sorry, not sorry'

### How does *SIX* bridge these sixteenth-century queens and contemporary pop music?

**Toby:** Each Queen as we imagined her has a few parallels in the modern-day pop world, and each song is influenced by a number of contemporary singers. Aragon is the Beyoncé of the group. And then there's Anne Boleyn: traditionally she's taken very seriously, so we wanted to flip that on its head and make her fun and carefree—like Lily Allen or Avril Lavigne. Jane Seymour is inspired by Adele and Sia. Anna of Cleves' song is this Rihanna/Nicki Minaj parody. Katherine Howard is inspired by Ariana Grande and Britney Spears—kind of 'bubblegum pop.' And we'll subvert that by . . . well, you'll see. And then Catherine Parr is like Alicia Keys, the soulful one who brings everyone together at the end. ►►





Some audience members might respond to the Beyoncé references while others will relate to Catherine of Aragon or Anne Boleyn as historical figures. There's a little something for everybody.

**Lucy:** You can see these parallels in *SIX*'s design, as well. Our costume designer, Gabriella Slade, was inspired by the pop stars we used as the basis for each Queen. So there's a Renaissance corset paired with the signature Ariana Grande miniskirt, and you'll see the classic Tudor sleeves along with an ornate Beyoncé-style headpiece—it's a mash-up between a contemporary pop and Tudor silhouette. That design carries over to the all-female band, the Ladies in Waiting, too.

### It's a mash-up between a contemporary pop and Tudor silhouette

**Tell us about your collaboration and how this play came to be.**

**Toby:** Lucy and I were at Cambridge together. We ended up working on a lot of the same shows—she directed and I acted. We talked about writing a musical together some day. In 2017 the Cambridge University Musical Theatre

Society asked for applications to take an original musical to the Edinburgh Festival Fringe, so I applied. When I got the gig I asked Lucy to write it with me. I said, 'I have an idea for a pop concert musical with the six wives of Henry VIII. Do you want to write it with me?'

**Lucy:** And I agreed, even though I had never written anything before!

**After the Edinburgh Fringe, you've since toured the UK and premiered in London's West End earlier this year. And now *SIX* is having its North American Premiere here at Chicago Shakespeare. How will the production continue to develop here in Chicago—and with an American cast, this time?**

**Lucy:** So much of the show is shaped by the individual six Queens performing onstage—and what each brings to her role and to the group dynamic. Even though each Queen had a palette of pop stars who inspired their character, the actual interpretation of them is super malleable. And the cast has already started to own their versions—even taking inspiration from artists who weren't around when we were first writing *SIX*. We are really excited to see just how unique these incredible performers' versions of the Queens end up, and we fully expect that by Opening Night this production will feel a world apart from the one you'd see in London. ■

Previous page and above: the company of *SIX* in rehearsal; photos by joe mazza

## LONDON FANS LOST THEIR HEADS OVER **SIX**

**"IT IS EVERYTHING AND MORE!"**

Flawless! I award it six stars ★★★★★★

**"SELL YOUR SHOES  
TO SEE *SIX*."** My face was like  
this the whole time 😍🔥🔥

**"LOVED THIS SHOW"**  
By Royal Decree would  
highly recommend seeing"

**"Wowzers! IT IS AMAZING!!!! GO SEE IT!"**  
★★★★★ I laughed, I cried, I danced!"

# JOIN IN THE FUN!

# #SIXCHICAGO



LIKE US



/chicagoshakespeare

FOLLOW US



@chicagoshakes

TAG US



@chicagoshakes

VISIT US



chicagoshakes.com



## LOVE THE MUSIC?

STREAM/DOWNLOAD THE SOUNDTRACK ON  
YOUR PREFERRED MUSIC SERVICE TODAY!

Spotify users, go to the app's search bar, hit the camera icon to scan this code, and start listening now!





**SUBSCRIBE  
TODAY**  
FOR THE BEST  
SEATS AT THE  
BEST PRICE!

# IT SHAKES YOUR SOUL

**ROMEO  
AND JULIET  
THE KING'S  
SPEECH  
AS YOU LIKE IT  
EMMA  
AND MORE!**

312.595.5600 • [www.chicagoshakes.com](http://www.chicagoshakes.com)

chicago  
shakespeare  
on navy pier theater

chicago  
shakespeare  
on navy pier theater

**BARBARA GAINES**  
Artistic Director  
*Carl and Marilyn Thoma Chair*

**CRISS HENDERSON**  
Executive Director

**RICK BOYNTON**  
Creative Producer

**E. BROOKE FLANAGAN**  
Managing Director for Advancement  
and External Affairs

**Chicago Shakespeare Theater**  
by arrangement with **Kenny Wax, Global Musicals, George Stiles & Kevin McCollum**  
presents the North American premiere

## SIX

by **TOBY MARLOW & LUCY MOSS**

Scenic Design  
**EMMA BAILEY**

Costume Design  
**GABRIELLA SLADE**

Lighting Design  
**TIM DEILING**

Sound Design  
**PAUL GATEHOUSE**

Music Direction  
**ROBERTA DUCHAK**

Orchestrations  
**TOM CURRAN**

Casting  
**BOB MASON**

New York Casting  
**TARA RUBIN CASTING  
PETER VAN DAM, CSA**

Production Stage Manager  
**JINNI PIKE**

Music Supervision  
**JOE BEIGHTON**

Choreography  
**CARRIE-ANNE INGROUILLE**

directed by **LUCY MOSS & JAMIE ARMITAGE**

PRODUCTION SPONSOR **Ken Griffin**

Additional support provided by the  
**Ruth D. and Ken M. Davee New Works and Education Outreach Fund.**  
**ComEd** is the official lighting design sponsor of Chicago Shakespeare Theater.

Welcome. If we can help accommodate you during your visit, please speak with our House Manager. Please note that flashing lights and haze will be used during this performance. For your safety, we ask that you keep aisles and doorways clear. We request that you refrain from taking any photography and other video or audio recordings of the production.

**This performance will run 80 minutes with no intermission.**

# SALUTE TO SPONSORS

Chicago Shakespeare Theater is proud to recognize the partnership of our leading contributors, whose visionary support ensures that Shakespeare lives in Chicago today and for generations to come.

## MAJOR SEASON SUPPORTERS

BMO  Harris Bank  **ComEd**

THE  
DAVEE  
FOUNDATION

Julius Frankel  
Foundation

ELIZABETH MORSE  
*Gemini* CHARITABLE TRUST

Ken Griffin

From Our Family To Yours Since 1958  
**Land O'Frost**

Ray and Judy McCaskey

ROBERT R.  
MCCORMICK  
FOUNDATION

Rhoades Foundation Fund at  
The Chicago Community Foundation

Burton X. and  
Sheli Z. Rosenberg

Timothy R. Schwertfeger  
and Gail Waller

The Harold and Mimi  
Steinberg Charitable Trust

Carl and  
Marilynn Thoma

Donna Van Eekeren  
Foundation

## LEAD SPONSORS

Allscripts	Harve A. Ferrill	KPMG LLP	Richard W. Porter and Lydia S. Marti
Paul M. Angell Family Foundation	Food For Thought	The John D. and Catherine T. MacArthur Foundation	John W. and Jeanne M. Rowe
Anonymous	Lloyd A. Fry Foundation	Linda and Dennis Myers	The Segal Family Foundation
BlueCross BlueShield of Illinois	Virginia and Gary Gerst	Madhavan and Teresa Nayar	Barbara and Barre Seid Foundation
Joyce Chelberg	Illinois Arts Council Agency	National Endowment for the Arts	The Shubert Foundation
Kent and Liz Dauten	ITW	Sheila Penrose and Ernie Mahaffey	Shure Incorporated
Embassy Suites Chicago Downtown Magnificent Mile and DoubleTree Magnificent Mile	Jan and Bill Jentes	Polk Bros. Foundation	
Exelon	The Family of Jack Karp		
	Kirkland & Ellis LLP		
	Anna and Robert Livingston		

## ENDOWED FUNDS, CHAIRS, AND PROGRAMS

Mary and Nick Babson Fund to Support Chicago Actors	Pritzker Foundation
The Canon in Honor of Barbara Gaines	Team Shakespeare Fund
The Chicago Music Theatre Endowment	John W. and Jeanne M. Rowe Inquiry and Exploration Series
The Davee Foundation WorldStage Fund	The Segal Family Foundation Student Matinee Fund
Ruth D. and Ken M. Davee New Works and Education Fund	Dick Simpson in memory of Sarajane Avidon
The Hurckes Fund for Artisans and Technicians	Team Shakespeare Endowment
Kirkland & Ellis Audience Enrichment Fund	Carl and Marilyn Thoma Artistic Director Chair
Anstiss and Ronald Krueck Stage Design Fund	Gayle and Glenn R. Tilles Music Fund
The Malott Family Student Access Fund	The Sheldon and Bobbi Zabel Bard Core Program
Ray and Judy McCaskey Education Chair	

For more information about how you can support our work on stage, in the community, and around the world, please contact Brooke Flanagan, Managing Director for Advancement and External Affairs, at 312.595.5581 or [bflanagan@chicagoshakes.com](mailto:bflanagan@chicagoshakes.com).

# Cast

## THE QUEENS

Catherine of Aragon  
Anne Boleyn  
Jane Seymour  
Anna of Cleves  
Katherine Howard  
Catherine Parr

ADRIANNA HICKS\*  
ANDREA MACASAET\*  
ABBY MUELLER\*  
BRITTNEY MACK\*  
SAMANTHA PAULY\*  
ANNA UZELE\*

Alternate Aragon/Cleves/Parr

NICOLE KYOUNG-MI LAMBERT\*

Alternate Boleyn/Seymour/Howard/  
Dance Captain

MALLORY MAEDKE\*

Alternates never substitute for the listed Queens unless a specific announcement is made at the time of performance.

Production Stage Manager

JINNI PIKE\*

Assistant Stage Manager

SAMMY BROWN\*

*\*denotes member of Actors' Equity Association.*

## LADIES IN WAITING

Assistant Music Director/  
Conductor/Keyboard

JULIA SCHADE

Guitars

KIMI HAYES

Electric Bass

STACY McMICHAEL

Drums

SARAH ALLEN

Musicians Contractor

SEAN McNEELY

*All Musicians are members of the Chicago Federation of Musicians, Local 10-208.*

# Musical Numbers

EX-WIVES

The Queens

NO WAY

Catherine of Aragon

DON'T LOSE UR HEAD

Anne Boleyn

HEART OF STONE

Jane Seymour

HAUS OF HOLBEIN

The Queens

GET DOWN

Anna of Cleves

ALL YOU WANNA DO

Katherine Howard

I DON'T NEED YOUR LOVE

Catherine Parr

SIX

The Queens



# A Little Bit of Her-story...

## CATHERINE OF ARAGON



**Birth and death** 15 December 1485 – 7 January 1536

**Marriage** 1<sup>st</sup> to Arthur (Henry's older brother), 14 November 1501 (aged 15)  
2<sup>nd</sup> to Henry VIII, June 1509 (aged 23)

**Children** Mary, born 18 February 1516 (Queen Mary I); 3 stillborn children; 2 died as babies; further miscarriages

**Interests** Religion, sewing, dancing, a bit more religion

**Cause of death** Probably a type of cancer in her heart

**Remembered for** Her refusal to accept that her marriage was invalid; her faith; her dramatic speech to Henry at the court to judge the annulment of their marriage

**Did you know?** She was Regent (while Henry fought in France in 1513) during the Battle of Flodden. When James IV of Scotland was killed in the battle she wanted to send his body to Henry as a present.

**Queenspiration** Beyoncé and Shakira

## ANNE BOLEYN



**Birth and death** Probably 1501 – 19 May 1536

**Marriage** 25 January 1533 (aged 31)

**Children** Elizabeth, born 7 September 1533 (Queen Elizabeth I); At least two miscarriages

**Interests** Fashion, dancing, flirtation, collecting evangelical works

**Queen links** Lady-in-waiting to Catherine of Aragon

**Cause of death** Executed on Tower Green, London

**Remembered for** Headlessness; bringing about the break with the Pope; having a sixth finger

**Did you know?** Fluent in French, she would have acted as a translator during the visit of Emperor Charles V to the English court in 1522.

**Queenspiration** Lily Allen and Avril Lavigne

## JANE SEYMOUR



**Birth and death** 1507 or 1508 – 24 October 1537

**Marriage** 30 May 1536 (aged 28/9)

**Children** Edward, born 12 October 1537 (King Edward VI)

**Interests** Religious faith, being obedient

**Queen links** Lady-in-waiting to Anne Boleyn

**Cause of death** Hemorrhage after the birth of Prince Edward

**Remembered for** Being the "only one he ever loved"; having two troublesome brothers who fought over the regency of the young prince after King Henry's death

**Did you know?** While Anne was still alive, Henry sent Jane a gift of money, which she refused, apparently saying there "was no treasure in this world that she valued so much as her honor..."

**Queenspiration** Adele and Sia

## ANNA OF CLEVES



**Birth and death** 1515 – 16 July 1557

**Marriage** 6 January 1540 (aged 24)

**Children** None

**Interests** Staying alive

**Queen links** Visited Katherine Howard once she became queen and bowed down to her

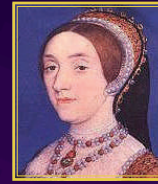
**Cause of death** Probably cancer

**Remembered for** Staying alive

**Did you know?** When Henry first met her he disguised himself, possibly imagining some sort of romantic reaction. When he kissed her, she is said to have turned away coldly at this hideous stranger molesting her; according to a witness he "never saw his highness so marvelously astonished..."

**Queenspiration** Nicki Minaj and Rihanna

## KATHERINE HOWARD



**Birth and death** Probably 1523 – 13 February 1542

**Marriage** 18 July 1540 (aged 17)

**Children** None

**Interests** Dancing, music, animals

**Queen links** Lady-in-waiting to Anna of Cleves; cousin to Anne Boleyn

**Cause of death** Executed on Tower Green, London

**Remembered for** Being completely used (and abused) by those with more power

**Did you know?** From her arrest on 8 November 1541 to her execution three months later, Katherine stayed under house arrest; in late January 1542, an Act was passed in Parliament that made it treason for a woman to become the king's wife without "plain declaration before of her unchaste life," meaning Henry could have her killed.

**Queenspiration** Ariana Grande and Britney Spears

## CATHERINE PARR



**Birth and death** Probably 1512 – 5 September 1548

**Marriage** 1<sup>st</sup> to Sir Edward Burgh, a courtier, 1529–1533  
2<sup>nd</sup> to John Neville, Lord Latimer, 1534–1543  
3<sup>rd</sup> to Henry VIII, 12 July 1543  
4<sup>th</sup> to Thomas Seymour, May 1547, in secret

**Children** A daughter (with Thomas Seymour) who died as a baby

**Interests** Writing books, encouraging education, Reformation

**Queen links** Her mother was a lady-in-waiting to Catherine of Aragon; friendly with her daughter Princess Mary.

**Cause of death** Childbirth

**Remembered for** Surviving

**Did you know?** Catherine was the first woman in England to publish books under her own name and in English.

**Queenspiration** Alicia Keys and Emeli Sandé

# Profiles



## ADRIANNA HICKS

(*Catherine of Aragon*)  
**BROADWAY:** revival of *The Color Purple*, *Aladdin*.  
**REGIONAL:** Paper Mill Playhouse, Encores! City Center, Ridgefield Playhouse, Lyric Theatre

of Oklahoma, Casa Mañana. **TOURING:** revival of *The Color Purple*. **INTERNATIONAL:** *Sister Act*, *Dirty Dancing* (Germany), *Legally Blonde* (Austria). **CONCERT:** Michael Bublé *Call Me Irresistible* tour. **EDUCATION:** BFA in musical theatre, The University of Oklahoma. **AWARDS:** 2017 Emmy Award, 2018 Elliot Newton Award, 2019 Oklahoma City Broadway World Award.



## ANDREA MACASAET

(*Anne Boleyn*) **CANADA:** *Heathers the Musical*, *Avenue Q*, *The 25th Annual Putnam County Spelling Bee* (Winnipeg Studio Theatre); *Prairie Nurse* (Station Arts

Centre); *Miss Saigon* (Victoria Operatic Society). **TOURING:** *Bubble Guppies Live! Ready to Rock* (Koba Entertainment).



## ABBY MUELLER

(*Jane Seymour*)  
**CHICAGO SHAKESPEARE:** Constance in *The Three Musketeers*. **CHICAGO:** Milly in *Seven Brides for Seven Brothers* (Drury Lane Theatre); Fiona in

*Brigadoon*, Cinderella in *Into the Woods*, Georgie in *The Full Monty* (Marriott Theatre). **BROADWAY:** Carole King in *Beautiful: The Carole King Musical*; *Kinky Boots*. **REGIONAL:** *A Minister's Wife* (Lincoln Center Theatre); *School of Rock* (off-Broadway workshop, Gramercy Theatre); Abigail Adams in *1776* (American Conservatory Theater/Asolo Repertory Theatre); Fantine in *Les Misérables*, Ellen in *Miss Saigon*, Narrator in *Joseph and the Amazing Technicolor Dreamcoat* (Fulton Theatre); Mary Zimmerman's *Candide* (Huntington Theatre Company); Catherine in *Pippin* (Utah Shakespeare Festival). **TELEVISION:** *America's Got Talent* (NBC), *The Today Show* (ABC). www.abbymueller.com



## BRITTNEY MACK

(*Anna of Cleves*)  
**OFF BROADWAY:** *Black Nativity*.  
**REGIONAL:**

Merry-Go-Round Playhouse, Phoenix Theatre, The Palace Theatre, Arizona Broadway Theatre, Maine State Music Theater, Pacific Conservatory of the Performing Arts, Roxy Regional Theatre, Seacoast Repertory Theatre. **TOURING:** production singer for Royal Caribbean Cruise Lines. **TELEVISION:** *Empire* (FOX). **EDUCATION:** certificate from integrated program, American Musical and Dramatic Academy. **AWARDS:** 2011, 2014 ariZoni Theatre Awards.



## SAMANTHA PAULY

(*Katherine Howard*)  
**CHICAGO:** *Honeymoon* in Vegas, *Evita*, *Madagascar*, *Cinderella After the Ball*, *Elf the Musical*, *Seussical*, *The Princess and the Pea*, *Godspell*

(Marriott Theatre); *Elf the Musical*, *Hairspray* (Paramount Theatre); *Beaches* (Drury Lane Theatre). **TOURING:** *Bat Out of Hell*. **REGIONAL:** *Evita* (Wesport Country Playhouse); *Legally Blonde* (Circa '21 Dinner Playhouse). **TELEVISION:** *Chicago PD* (NBC). **COMMERCIAL:** Mike's Hard Lemonade, T-Mobile, Purina, Spravato. **UPCOMING:** Eva Peron in *Evita* (Regent's Park Open Air Theatre). **EDUCATION:** BFA in music theatre, Viterbo University.



## ANNA UZELE

(*Catherine Parr*)

**BROADWAY:** *Once On This Island*.  
**REGIONAL:** *Dreamgirls*, *The Drowsy Chaperone*, *When You Wish, The Wizard of Oz* (Lyric

Theatre of Oklahoma). **EDUCATION:** BFA in musical theatre, Texas State University.



## NICOLE KYOUNG-MI LAMBERT

(*Alternate Aragon/Cleves/Parr*)  
**CHICAGO:** *Crystal in Little Shop of Horrors* (Mercury Theater Chicago); *Sour Kangaroo* in *Seussical* (Marriott Theatre);

*Memphis, In the Heights* (Porchlight Music Theatre); Jennifer in *Creatives* (Chicago Theatre Workshop); *Godspell* (Saint Sebastian Players); Mimi in *Rent* (BrightSide Theatre). **EDUCATION:** BA in music education, Roosevelt University.



## MALLORY MAEDKE

(*Alternate Boleyn/ Seymour/Howard/Dance Captain*) **CHICAGO:** *Legally Blonde*, *The Little Mermaid*, *Mamma Mia!*, *Hairspray* (Paramount

Theater); *Seussical* (Marriott Theatre); *Memphis* (Porchlight Music Theater); *Hair* (Mercury Theater Chicago); *Cabaret* (Theatre at the Centre); Janis Joplin in *Beehive the Musical* (Little Theater on the Square); *42nd Street*, *All Shook Up*, *The Addams Family* (Rocky Mountain Repertory Theatre); *One Hit Wonders* (Black Ensemble Theater). **CONCERT:** backup vocalist for Kristin Chenoweth at The Chicago Theatre. **EDUCATION:** Columbia College Chicago. Ms. Maedke is also a voiceover artist.

## TOBY MARLOW (Writer) WEST END:

*SIX* (Arts Theatre/UK Tour); *Hot Gay Time Machine* (Trafalgar Studios); *Red/Wolf* (Vault Festival). **TELEVISION:** *Courtney Act's Christmas Extravaganza* (Channel 4). **EDUCATION:** BA in English, University of Cambridge. **AWARDS:** WhatsOnStage Award for Best Off-West End Production (*SIX*); Brighton Fringe Award for Excellence, Brighton Fringe LGBTQ+ Award (*Hot Gay Time Machine*).

## LUCY MOSS (Writer/Director)

**INTERNATIONAL:** *SIX* (Arts Theatre/UK Tour); *Hot Gay Time Machine* (Trafalgar Studios); *Pelican: The Cat Man Curse*, *Pelican: Fisk* (Soho Theatre). **ASSOCIATE/ ASSISTANT DIRECTING:** *Monster* (Pleasance Islington); *Boris: World King* (Trafalgar Studios); *Red/Wolf* (Vaults). **TELEVISION:** *Courtney Act's Christmas Extravaganza*

(Channel 4). **EDUCATION:** BA in history, University of Cambridge; musical theatre and dance, Laine Theatre Arts. **AWARDS:** 2019 WhatsOnStage Award; 2018 Brighton Fringe Award for Excellence; 2018 Brighton Fringe LGBTQ+ Award.

**JAMIE ARMITAGE (Director) DIRECTING:** *SIX* (Arts Theatre/UK Tour); *Southern Belles*, *And Tell Sad Stories of the Death of Queens* (King's Head Theatre); *Love Me Now* (Tristan Bates Theatre); *Spoonface Steinberg* (Edinburgh Festival Fringe); *Richard II* (Emmanuel Chapel); *Footlights Pantomime: Robin Hood*, *Henry IV Part 1* (ADC Theatre). **ASSOCIATE DIRECTING:** *The Boys in the Band* (Vaudeville Theatre). **ASSISTANT DIRECTING:** *The Hunt* (Almeida Theatre); *The Madness of George III* (Nottingham Playhouse/National Theatre Live); *Out of Order* (UK Tour); *Platinum* (Hampstead Theatre); *The Boys in the Band* (Park Theatre/UK Tour). Mr. Armitage is a resident director at the Almeida Theatre and a junior associate at the King's Head Theatre.

**CARRIE-ANNE INGROULLE (Choreographer) WEST END:** *SIX* (Arts Theatre/UK tour, 2019 Olivier Award nomination - Outstanding Achievement in Choreography, OFFIE Award nomination - Best Choreographer, WhatsOnStage Award nomination - Best Choreography); *Jeeves and Wooster* (Duke of York's Theatre); resident choreographer for *Hamilton* (Victoria Palace Theatre); associate choreographer for *I Can't Sing: The X-Factor Musical* (London Palladium). **LONDON:** choreographer for *Sounds and Sorcery* (The Vaults); movement director for *The Suicide* (National Theatre); director/choreographer for *ZooNation: The Next Generation* (Royal Festival Hall); associate director/choreographer for *Sylvia* (The Old Vic); assistant director/choreographer for *ZooNation's Groove On Down the Road* (Queen Elizabeth Hall); associate director/choreographer/performer for *ZooNation's The Mad Hatter's Tea Party* (The Roundhouse/Linbury Theatre ROH); *Into the Hoods* (Peacock Theatre); movement director for *Polatrix* (Hackney Down Studio Theatre); movement director for *R&D* (Hampstead Theatre). **REGIONAL:** movement director for *This Is My Family* (Chichester Festival Theatre). **TOURING:** choreographer for *The Catherine Tate Show* (UK tour); resident director for *Blaze:*



*The Street Dance Sensation* (original cast, Peacock Theatre/European tour). **FILM:** assistant choreographer/performer for *Street Dance 3D*.

#### JOE BEIGHTON (Music Supervisor)

**UK CREDITS:** *SIX* (Arts Theatre/UK Tour, Olivier Award nomination – Outstanding Achievement in Music); *Bare: A Pop Opera* (The Sainsbury Theatre/London Academy of Music & Dramatic Art); *Cinderella* (Civic Theatre Chelmsford); *Luke Bayer in Concert, Janie Dee: Off the Record* (Live at Zedel); *And Tell Sad Stories of the Deaths of Queens* (Kings Head Theatre); *Spring Awakening* (Greenside Venues at Edinburgh Fringe); *Damn Yankees* (Unicorn Theatre London); *There's No Business Like Show Quizness* (Pizza Express Live: Holborn); *Dirty Rotten Scoundrels* (Bernie Grant Arts Centre). **EDUCATION:** BA in music, University of Cambridge; post-graduate diploma in musical direction, Mountview Academy of Theatre Arts.

**EMMA BAILEY** (Set Designer) **WEST END:** *SIX* (Arts Theatre). **LONDON:** *Stay Another Song* (Young Vic); *Double Double Act* (The Unicorn); *Mapping Brent* (Kiln Theatre); *Tonight I'm Going to Be the New Me, Heartbeats and Algorithms* (Soho Theatre); *As You Like It, Playboy of the Western World* (Southwark Playhouse); *Forgotten* (Arcola Theatre); *Super Duper Close Up* (The Yard). **OPERA/DANCE:** *The Magic Flute* (Opera Up Close); *Sevastopol, Kreutzer Sonata, Home* (Royal Opera House); *McNicol Collective* (Sadlers Wells); *Company Chameleon* (Lowry/HOME Manchester); *Laura Mvula* (Somerset House/Glastonbury Pyramid Stage). **UK REGIONAL:** Royal Shakespeare Company, Sheffield Crucible, Live Theatre, Northern Stage, The Lowry Manchester, Everyman Theatre Cheltenham, Derby Theatre, Bristol Tobacco Factory, The Drum at Theatre Royal Plymouth. **EDUCATION:** MA, Motley Theatre Design Course; BSc Architecture, The Bartlett School of Architecture at University College London. **AWARDS:** 2011 Linbury Prize for Stage Design.

#### GABRIELLA SLADE (Costume Designer)

**LONDON:** *Showstopper!* (The Other Palace/West End); *The Importance of Being Earnest* (Vaudeville Theatre); *The Last Days of Anne Boleyn* (Tower of London); *Working* (Southwark Playhouse); *In The Heights* (Kings Cross Theatre); *The Last Five Years* (St. James Theatre). **UK CREDITS:** *Peter and the Starcatcher* (Royal & Derngate Northampton). **DANCE:** *Revellers' Mass, Folk, The Green House* (National Dance Company Wales). **SET & COSTUME DESIGN:** *Billionaire Boy* (Nuffield Theatre); *Murder for Two* (Watermill Theatre/The Other Palace); *Moll Flanders* (Mercury Theatre); *A Spoonful of Sherman, Stig of the Dump* (UK Tour); *Spring Awakening* (Hope Mill Theatre); *Bodies* (Royal Court Theatre); *Kommilitonen!* (Welsh National Opera). **EDUCATION:** theatre design, Royal Welsh College of Music and Drama. **AWARDS:** 2019 Off West End Award, Best Costume Design for *SIX*; 2019 Olivier Award and WhatsOnStage Award nominations, Best Costume Design for *SIX*; 2012 Philip and Christine Carne Award for Theatre Design.

**TIM DEILING** (Lighting Designer) **LONDON:** *SIX, Knights of the Rose, American Idiot* (Arts Theatre); *Dick Whittington, Cinderella, Aladdin* (Lyric Hammersmith); *The Sweet Science of Bruising* (Southwark Playhouse); *The Dreamers* (Abbey Road Studios); *Miss Atomic Bomb* (St. James Theatre); *Vanities* (Trafalgar Studio); *Incognito, F\*\*k the Polar Bears* (Bush Theatre); *Bare: The Rock Opera, Pacific Overtures, Honk, Billy, Whistle Down the Wind* (Union Theatre). Associate Lighting Design includes *Chicago* (Phoenix Theatre); *Scottsboro Boys* (Garrick Theatre); *White Christmas* (Dominion Theatre); *The Lorax* (The Old Vic). **UK TOURING:** *Club Tropicana, American Idiot, Summer Holiday, Salad Days, Iolanthe, Our House, Mikado, Miracle on 34th Street*. **UK REGIONAL:** *Dedication* (Nuffield Theatre); *Once Upon a Time in Wigan, 65 Miles* (Hull Truck Theatre); associate lighting design credits include *One Love* (Birmingham Repertory Theatre), *Pink Sari Revolution* (Curve Theatre). **INTERNATIONAL:** *Amelie Das Musical* (WERK7 Theater, Munich). Associate lighting design credits include *The Lorax* (Alexander Theatre, Toronto); *Chicago* (Various International); *Cirque du Soleil: Paramour* (Neue Flora, Hamburg). **OPERA:** associate lighting design credits include

*Lucia di Lammermoor* (Greek National Opera); *Orestia* (Staatstheatre, Stuttgart); *The Exterminating Angel* (Royal Danish Opera House).

#### PAUL GATEHOUSE (Sound Designer)

**SOUND DESIGN:** *Amelie* (Werk7 Theatre, Munich); *Billionaire Boy* (Nuffield Theatres, Southampton); *SIX* (Arts Theatre/National Tour); *Mary Poppins* (Zurich/Dubai, Asian premiere in Japan). **ASSOCIATE SOUND DESIGN:** *Hamilton* (Victoria Palace Theatre); *Half A Sixpence* (Noel Coward Theatre); *Les Misérables* (London 25th Anniversary/International Tour/Madrid/Manilla/US Tour); *The Phantom of the Opera* (London/Broadway/Las Vegas/25th Anniversary/Hamburg/Paris); *Evita* (US National Tour); *Miss Saigon* (Tokyo/Netherlands); *Betty Blue Eyes* (Novello Theatre); *The Wizard of Oz, Sister Act, The Sound of Music* (The London Palladium); *Love Never Dies, Joseph and the Amazing Technicolor Dreamcoat* (Adelphi Theatre); *Phantom: The Las Vegas Spectacular* (Las Vegas); *The Woman in White* (Broadway); *Starlight Express* (Tour). **RECORDINGS:** *Mel Brooks' Young Frankenstein - Original London Cast Recording* (Producer/Mixer); *Disney's Newsies* Theatrical and DVD Release (Mixer); *Miss Saigon: The Definitive Live Recording* Theatrical, DVD, and CD Release (Recording Engineer/Mixer).

#### ROBERTA DUCHAK (Music Director)

**CHICAGO SHAKESPEARE:** *Hamlet, The Little Mermaid, Romeo and Juliet the Musical - The People vs. Friar Lawrence, Murder for Two, SIX*. **CHICAGO:** *Little Shop of Horrors, South Pacific, 42nd Street, Rock of Ages, Chicago, Saturday Night Fever, Smokey Joe's Cafe, Crazy for You, Hazel, Billy Elliot, Les Misérables, West Side Story, White Christmas, Young Frankenstein, Hello, Dolly!, Oliver, The Sound of Music, Sweeney Todd, Ragtime, Spamalot, Gypsy, Seven Brides for Seven Brothers, Miss Saigon* (Drury Lane Theatre); *Brigadoon* (Goodman Theatre); *The Story of My Life* directed by Richard Maltby Jr. (Biograph Theater); *The Original Grease* (American Theatre Company); *The Rocky Horror Picture Show* (Mercury Theater Chicago); musical supervisor for *A Little Night Music* (Writers Theatre). **FILM:** vocal coach for Russell Crowe and Hugh Jackman in *Les Misérables*. **AWARDS:** one Jeff Award, five nominations. **ACTING:** Mother

in *Ragtime* (Broadway); *Ghost of Christmas Past in Scrooge*, *Magnolia* and *Ellie in Showboat* (national tour); *Rona Lisa Peretti in The 25th Annual Putnam County Spelling Bee* (Chicago/national tour). Ms. Duchak has two vocal studios in the Chicago area.

#### TOM CURRAN (Orchestrator) LONDON:

*Hot Gay Time Machine* (Trafalgar Studios); *SIX* (Arts Theatre/UK tour); *Barnum* (associate orchestrator, Menier Chocolate Factory); *West End Bares* (Novello/Shafesbury Theatre); *Funny Girl* (associate orchestrator, Menier Chocolate Factory/Savoy Theatre/UK tour); *High Society* (additional orchestrations, The Old Vic); *Fully Committed* (Menier Chocolate Factory); *My Land's Shore* (workshop, RADA); *Peter Pan* (workshop, Lyric Theatre); *Jekyll & Hyde* (Union Theatre); *After the Turn* (Courtyard Theatre). **TOURING:** *The War of the Worlds* (Jeff Wayne, arena tour); *Shadows & Reflections* (Marc Almond, UK tour); *The Sound of Music* (orchestral reduction, UK tour); *Alice the Musical, Robin Hood, The Wind in the Willows, The Sword in the Stone, Treasure Island* (Cambridge Touring Theatre UK tours). **TRAINING:** Guildhall School of Music & Drama. **AWARDS:** Olivier Award nomination for Outstanding Achievement in Music (*SIX*).

#### MELODY SINCLAIR (Associate

Choreographer) **UK CREDITS:** associate choreographer for *SIX* (Arts Theatre); *ZooNation 10 Year Anniversary, ZooNation: Unplugged* (Sadler's Wells Theatre); *Groove on Down the Road* (Royal Festival Hall); *Everybody's Talking About Jamie* (West End Live); the International Olympic Committee Head of State performance (Royal Opera House); Ellesse AW19 Partner Conference Catwalk; *Coco and Eve "Here for All Hair Types" Campaign*; BBC Dance Proms (Royal Albert Hall). **INTERNATIONAL:** Pioneer DJ: International Music Summit (Ibiza, Spain). **EDUCATION:** Chaplins Stage School (Northampton); Boy Blue Entertainment (London); ZooNation Dance Company (London); BA in dance urban practice, University of East London.

**BOB MASON** (*Artistic Associate/Casting Director*) is in his nineteenth season as CST's casting director, where his credits include over one hundred productions and thirty-two plays in Shakespeare's canon. In addition to numerous productions with Barbara Gaines, other productions of note include: a host of Sondheim musicals directed by Gary Griffin; *Ride the Cyclone* (CST, MCC, Fifth Avenue/ACT), directed by Rachel Rockwell; *Rose Rage: Henry VI, Parts 1, 2, and 3*, directed by Edward Hall; and *The Molière Comedies*, directed by Brian Bedford. He directed and co-created *Shakespeare Tonight!* with Beckie Menzie, as part of Shakespeare 400 Chicago. Prior to casting, Mr. Mason enjoyed a career as a Jeff Award-winning actor and singer, and has been a visiting educator for the School at Steppenwolf, Acting Studio Chicago, the University of Illinois at Chicago, and Northwestern University.

**TARA RUBIN CASTING/PETER VAN DAM, CSA** (*New York Casting*) **SELECT BROADWAY/NATIONAL TOURS:** *Ain't Too Proud, King Kong, Summer: The Donna Summer Musical, The Band's Visit, Prince of Broadway, Indecent, Bandstand, Sunset Boulevard, Miss Saigon, Dear Evan Hansen, A Bronx Tale, Cats, Falsettos, Disaster!, School of Rock, Bullets Over Broadway, Les Misérables, Big Fish, The Phantom of the Opera, Billy Elliot, Shrek, Spamalot, ...Spelling Bee, The Producers, Mamma Mia!, Jersey Boys.* **OFF BROADWAY:** *Gloria: A Life, Smokey Joe's Café, Here Lies Love, Love, Loss, and What I Wore.* **SELECT REGIONAL:** Yale Repertory Theatre, La Jolla Playhouse, The Old Globe, Westport Country Playhouse, Asolo Rep. [www.tararubincasting.com](http://www.tararubincasting.com)

**JINNI PIKE** (*Production Stage Manager*) **CHICAGO SHAKESPEARE:** *Schiller's Mary Stuart, Ride the Cyclone.* **CHICAGO:** *The Producers, The Wizard of Oz, Once, Elf the Musical, Sweeney Todd, Disney's The Little Mermaid, Hairspray, The Who's Tommy* (Paramount Theatre); *Bakersfield Mist, Danny Casolaro Died for You, The How and the Why, A Raisin in the Sun, Wasteland* (TimeLine Theatre Company); *Hillary and Clinton* (Victory Gardens Theater). **REGIONAL:** eight seasons as production stage manager with Heart of America Shakespeare Festival (Kansas City, MO); three seasons as production stage manager

and twenty-five productions at Unicorn Theatre (Kansas City, MO); *A Christmas Carol* (Kansas City Repertory Theatre).

**SAMMY BROWN** (*Assistant Stage Manager*) **CHICAGO SHAKESPEARE:** Short Shakespeare! productions of *Macbeth, A Midsummer Night's Dream*; Chicago Shakespeare in the Parks production of *Romeo and Juliet* (stage manager); *Nell Gwynn, Red Velvet, The Book of Joseph*, Chicago Shakespeare in the Parks production of *Twelfth Night* (assistant stage manager). **OFF BROADWAY:** *Summer Valley Fair* (Theatre 3, New York Musical Theatre Festival); *The Old Man and the Old Moon* (The New Victory Theater). **REGIONAL:** productions with South Coast Repertory, Laguna Playhouse, Williamstown Theatre Festival, Norwegian Cruise Line, Mill Mountain Theatre, Lake Dillon Theatre Company. **EDUCATION:** MFA in drama, University of California Irvine; BS in stage management, University of Evansville.

**KENNY WAX** (*Producer*) Kenny is the producer of the five times Olivier nominated *SIX* currently playing in London at the Arts Theatre, *The Play That Goes Wrong* (Laurence Olivier Award - Best New Comedy), now in its fifth year at the Duchess Theatre, on a US tour and playing off-Broadway at New World Stages; *Peter Pan Goes Wrong* which played two West End seasons, *The Comedy About A Bank Robbery* which has just celebrated its third birthday at the Criterion Theatre. He produced the West End musicals *Top Hat* and *Once on this Island* which both won Laurence Olivier Awards for Best New Musical. He has toured Stiles and Drewe's *Honk, Aspects of Love, La Strada, and The Witches of Eastwick*. From September he will be taking over the Vaudeville Theatre in London where he will be producing three new comedies. In June 2017, Kenny was appointed President of the Society of London Theatre.

**ANDY BARNES & WENDY BARNES** (*Producers*) Global Musicals was founded in 2017 by Andy and Wendy Barnes. Previous joint producing credits include: *The Great British Musical* (Criterion); *Lift* (Soho Theatre); *The Little Beasts* (The Other Palace); *From Up Here* (South Hill Park); *The House of Mirrors and Hearts* (Arcola); *Danny Hero*

(The Core); As development producers: *The Go-Between* (West Yorkshire Playhouse, Royal and Derngate, Derby Live); *Pieces of String* (Mercury Theatre, Colchester); As associate producers: *The Go-Between* (Apollo Theatre, London). Andy's additional credits include: *The Wiz* (Hackney Empire); *Departure Lounge* (Edinburgh, New York, London); *Dr. Foster* (Menier Chocolate Factory); *Someone Who'll Watch Over Me* (Gene Frankel Theatre, New York). As associate producer: *When Harry Met Sally* (UK Tour); *Tell Me On A Sunday* (UK Tour). Global Musicals are currently producing *Club Mex*, a new immersive nightclub musical and *Pieces of String*. Find out more: [@globalmusicals www.globalmusicals.com](http://globalmusicals.com)

**GEORGE STILES** (*Producer*) George is delighted to be back at Chicago Shakespeare, this time as a producer. His writing credits here include *The Three Musketeers, Peter Pan - A Musical Adventure*, and the score for Barbara Gaines' production of *Troilus & Cressida*. A native of the UK, George is best known as an award-winning composer of stage musicals such as *Mary Poppins, Honk!, Betty Blue Eyes, Peter Pan - A Musical Adventure* and *Soho Cinders* - all written with lyricist Anthony Drewe. However, he's delighted to be making his debut as a producer with *SIX*, having seen the 2017 student production in Cambridge, England and got more excited than his doctor recommends. He's also very happy to be working with his old friends Rick Boynton, Criss Henderson, and Barbara Gaines once more, as well as three champions of new British musicals, Kenny Wax and Wendy & Andy Barnes. George has long had a deep passion for nurturing new writing through MercuryMusicals.com and the annual Stiles + Drewe Prize. If you're a young writer inspired by what you see tonight, then get creative - it happened for Marlow and Moss! [www.stilesanddrewe.com](http://www.stilesanddrewe.com)

**KEVIN MCCOLLUM** (*Producer*) has received the Tony Award for Best Musical for *In the Heights* (2008), *Avenue Q* (2004), and *Rent* (1996), which also won the Pulitzer Prize. He is currently represented off-Broadway and on tour with the Olivier Award-winning *The Play That Goes Wrong*. He produced Mike Birbiglia's *The New One* (Broadway), *Something Rotten!* (Broadway, National Tour), *Hand to God* (Broadway, West End),

*Motown: The Musical* (Broadway, West End, National Tour, and UK Tour), *The Drowsy Chaperone* in 2006, which won five Tony Awards, Baz Luhrmann's production of Puccini's *La Bohème* in 2002, [title of show] in 2008, the touring and Broadway productions of *Irving Berlin's White Christmas*, the off Broadway hit *De La Guarda*, the recent hit revival of *West Side Story*. Upcoming projects include the *West Side Story* film (directed by Steven Spielberg); *The Notebook* (music and lyrics by Ingrid Michaelson, book by Bekah Brunstetter); and, through his joint venture with Fox Stage, adaptations of *Mrs. Doubtfire* and *The Devil Wears Prada*. In 1995 Mr. McCollum co-founded the Producing Office, and has since created Alchemation, a theatrical and media producing company committed to new work. Mr. McCollum was trained at the University of Cincinnati College-Conservatory of Music, and earned his Master's degree in film producing from the Peter Stark Program at the University of Southern California. In 1995, he received the Robert Whitehead Award for Outstanding Commercial Theatre Producing.

**RICK BOYNTON** (*Creative Producer*) focuses on current and future artistic planning and production, as well as the development of all new plays, musicals, and adaptations for CST. Projects include: *The Book of Joseph, Ride the Cyclone* (CST, MCC, 5th Avenue/ACT, Alliance Theatre), *Sense and Sensibility* (CST, Old Globe), *Cadre* (co-director) (CST, Johannesburg, Grahamstown, Edinburgh, Vancouver), *Othello: The Remix* (CST, London, Germany, Edinburgh, South Korea, New York), *Funk It Up About Nothin'* (CST, Edinburgh, Australian tour, London), *A Flea in Her Ear* (CST, Williamstown Theatre Festival), *The Three Musketeers* (CST, Boston, London), *The Emperor's New Clothes, The Adventures of Pinocchio, Murder for Two* (CST, New York), and *The Feast: an intimate Tempest* (in collaboration with Redmoon). Former artistic director of the Marriott Theatre and multiple Jeff Award-winning actor, he has starred in productions nationally, including CST's production of *A Flea in Her Ear* as Camille (Jeff Award, After Dark Award). As casting director/associate at Jane Alderman Casting, projects included: the television series *Early Edition, Missing Persons,*



*Untouchables*, and *ER*; the films *While You Were Sleeping* and *Hoodlum*, among others; and numerous national tours. Mr. Boynton has lectured at his alma mater Northwestern University and is the former president of the board of the National Alliance for Musical Theatre.



# BARBARA GAINES

(Artistic Director/Carl and Marilynn Thoma Chair)

has directed nearly sixty productions at Chicago Shakespeare since founding the Theater in 1986, including thirty of Shakespeare's plays. Honors include the 2008 Tony Award for Outstanding Regional Theatre, the prestigious Honorary OBE (Officer of the Most Excellent Order of the British Empire) in recognition of her contributions strengthening British-American cultural relations, as well as multiple Joseph Jefferson Awards for Best Production and for Best Director. Ms. Gaines has directed at the Royal Shakespeare Company in Stratford-on-Avon, Lyric Opera of Chicago, and The Old Globe in San Diego.

SIX © 2017 Toby Marlow & Lucy Moss. SIX is presented under license from Ex-Wives Ltd., London. All rights reserved. For all rights enquiries: [rights@sixthemusical.com](mailto:rights@sixthemusical.com)



# CRISS HENDERSON

(Executive Director)

has produced the Theater's past twenty-nine seasons. Under his leadership, CST has become one of Chicago's most celebrated cultural organizations and a leading American regional theater, honored with the 2008 Tony Award for Outstanding Regional Theatre, as well as multiple Laurence Olivier and Joseph Jefferson Awards. He oversaw the Theater's move to its home on Navy Pier in 1999 and led the recent development of The Yard at Chicago Shakespeare. In 2016 he spearheaded the citywide, yearlong celebration of Shakespeare's legacy, *Shakespeare 400 Chicago*. Mr. Henderson has garnered multiple honors, including: the 2013 Cultural Innovation Award from the Chicago Innovation Awards; Arts Administrator of the Year by *Arts Management Magazine* at the Kennedy Center; recognition in *Crain's Chicago Business* "40 under 40"; and the Chevalier de L'Ordre des Arts et des Lettres by the Minister of Culture of France. Mr. Henderson has served on the boards of directors of the League of Chicago Theatres and Arts Alliance Illinois, and for many years as president of the Producers' Association of Chicago-area Theaters. Mr. Henderson is director of DePaul University's MFA/Arts Leadership Program, a two-year graduate-level curriculum in arts management training created through a joint partnership between Chicago Shakespeare Theater and The Theatre School.

Lighting Equipment from PRG Lighting  
Sound Equipment from Sound Associates



All Musicians are members of the Chicago Federation of Musicians Local 10-208.

Chicago Shakespeare productions are made possible in part by the Illinois Arts Council Agency and an Incentive Grant from the City of Chicago Department of Cultural Affairs and Special Events.

Chicago Shakespeare is a constituent of the Theatre Communications Group, Inc., the national service organization of non-profit theaters; National Alliance for Musical Theatre; Shakespeare Theatre Association; Arts Alliance Illinois; the League of Chicago Theatres; and Ingenuity, Inc.



Actors' Equity Association (AEA), founded in 1913, represents more than 45,000 actors and stage managers in the United States. Equity seeks to advance, promote and foster the art of live theatre as an essential component of our society. Equity negotiates wages and working conditions, providing a wide range of benefits, including health and pension plans. AEA is a member of the AFL-CIO, and is affiliated with FIA, an international organization of performing arts unions. The Equity emblem is our mark of excellence. [www.actorsequity.org](http://www.actorsequity.org)

# MEREDITH WILLSON'S THE MUSIC MAN

BOOK, MUSIC AND LYRICS BY MEREDITH WILLSON

BASED ON A STORY BY MEREDITH WILLSON AND FRANKLIN LACEY

DIRECTED BY MARY ZIMMERMAN



Tony Award-winning director Mary Zimmerman (*The Jungle Book*, *Wonderful Town*) brings her magic touch to "one of the sunniest musicals ever" (*The New York Times*).

**JUNE 29 – AUGUST 4**



NORTHERN TRUST

Lead Corporate Sponsor



Major Corporate Sponsor

[GoodmanTheatre.org](http://GoodmanTheatre.org)

312.443.3800

Groups of 15+ only: 312.443.3820

GOODMAN THEATRE

# Staff

**BARBARA GAINES**  
Artistic Director  
*Carl and Marilyn Thoma Chair*

**CRISS HENDERSON**  
Executive Director

## ARTISTIC

**RICK BOYNTON**  
Creative Producer

**BOB MASON**  
Artistic Associate/  
Casting Director

**AISLINN FRANTZ**  
Associate Producer

**DOREEN SAYEGH**  
Producing Associate /  
Manager of International  
and Special Projects

**ROSIE BROSS**  
Producing Assistant

**DIEGO ZOZAYA**  
Interim Casting Assistant

**MIKEY GRAY**  
Assistant to the  
Creative Producer

**MELODY SINCLAIR**  
SIX Associate Choreographer

**MEGAN E. FARLEY**  
SIX Assistant Director

**ALYSSA SOTO**  
Casting Intern

## MANAGEMENT

**DEBORAH VANDERGRIFF**  
General Manager

**DANIEL J. HESS**  
Company Manager

**KEVIN SPELLMAN**  
Associate General Manager

**SAMANTHA BRAZILLER**  
Executive Assistant

**BEN GATES-UTTER**  
Company Management  
Associate

**EDWARD McCREARY**  
**KRISS McEACHERN**  
Arts Leadership Fellows

**DANA BEECH**  
Company Management  
Intern

## EDUCATION AND COMMUNITY ENGAGEMENT

**MARILYN J. HALPERIN**  
Director of Education  
and Communications  
*Ray and Judy McCaskey Chair*

**JASON HARRINGTON**  
Education Outreach Manager

**MOLLY TRUGLIA**  
Learning Programs Manager

**SARA B.T. THIEL, PH.D.**  
Public Humanities Manager

**PASSION ROCHELLE**  
**ANASTASIA WRENN**  
Education Interns

## FINANCE

**LINDA ORELLANA**  
Director of Finance

**DAN GRYCZA**  
Human Resources Manager/  
Finance Associate

**ALANA RYBAK**  
Assistant Director of Finance

**ALYSSA HUNTER**  
Accounting Manager

**BECKY TRAISMAN**  
Accounts Payable Assistant

## ADVANCEMENT

**E. BROOKE FLANAGAN**  
Managing Director  
for Advancement  
and External Affairs

**DOTTIE BRIS-BOIS**  
Associate Director of  
Development

**JENNY SEIDELMAN**  
Director of Partnerships

**KRISTEN CARUSO**  
Senior Advancement  
Manager/Board Liaison

**GRACE SCHNECK**  
Advancement Manager

**EMILY McCLANATHAN**  
Advancement  
Communications Coordinator

**KARL SISSMAN**  
VIP Concierge and  
Stewardship Coordinator

**VIKTORIA STEFANOVA**  
Donor Records and  
Data Coordinator

**MELANIE LEFTAKES**  
Advancement Intern

**HANYI WANG**  
Gala Intern

## MARKETING AND SALES

**JULIE STANTON**  
Director of Marketing  
and Sales

**HANNAH KENNEDY**  
Public Relations Director

**CATHY TAYLOR**  
Public Relations Consultant

**AMANDA CANTLIN**  
Senior Marketing Manager

**MARGARET McCALL**  
Marketing Manager,  
Ticketing Services

**ABIGAIL TOTH**  
Digital Marketing Manager

**AARON WEGNER**  
Marketing Manager,  
Insights & Analytics

**JESSICA CONNOR**  
Marketing and  
Communications Associate

**DANIEL WALTERS**  
Marketing and  
Communications Designer

**MIKAYLA SHAW**  
Marketing Assistant

**RACHEL HOLDERMAN**  
**MADISON KESSELING**  
Marketing Interns

**BESSIE BESS**  
**ERIN HUNTER**  
Box Office Supervisors

**SARA BENBELLA**  
**ANEYA COBBS**  
**BLAKE CORDELL**  
**CATHERINE HEALEY**  
**RICHARD KALLUS**  
**AARON ROBERTS**  
**ZOE ROSENFELD**  
Box Office Associates

## PRODUCTION

**CHRIS PLEVIN**  
Director of Production

**JEFF WILLIAMS**  
Associate Director of  
Production

**EMMALINE KEDDY-HECTOR**  
Production Coordinator

**ALEXA BERKOWITZ**  
Production Office Manager

**GRACE VERHOOG**  
Production Management  
Intern

## STAGE MANAGEMENT

**DEBORAH ACKER**  
Production Stage Manager/  
Associate Producer

**JINNI PIKE**  
Production Stage Manager

**SAMMY BROWN**  
Assistant Stage Manager

## SCENERY

**ANGELA McMAHON**  
**ROBERT L. WILSON**  
Scenery Supervisors

**PETER REGALBUTO**  
Stage Crew Head

**BRADLEY BURI**  
Stage Carpenter Head

**CALEB McANDREW**  
Technical Coordinator

**JACK BIRDWELL**  
**TYLER GUYNES**  
**ADAM HELD**  
**MICHAEL JANSSENS**  
**ADAM TODD**  
House Carpenters

## COSTUMES

**RYAN MAGNUSON**  
Costume Shop Manager

**CATHY TANTILLO**  
Costume Design Assistant

**REBECCA DOROSHUK**  
Wardrobe Supervisor

**MIKHA VAN DER PLOEG**  
SIX Associate Costume  
Designer

**LISE STEC**  
Head Draper

**MAGGIE HOFMANN**  
Draper

**YAS MAPLE**  
**ERIC SANCHEZ**  
**JENNIFER SUSAN**  
Stitchers

**MELISSA BOCHAT**  
Crafts Supervisor

**D.J. REED**  
Crafts Assistant

**CAITLIN ALLEN**  
Costume Apprentice

**COLLEEN M TAYLOR**  
**ALLISON MILLAR**  
Dressers

## ELECTRICS

**JEFF GLASS**  
Lighting Supervisor

**ALEC THORNE**  
Assistant Lighting Supervisor

**PAUL TOBEN**  
SIX Associate Lighting  
Designer

**JOAN E. CLAUSSEN**  
Lighting Crew Head

**SHELBI ARNDT**  
Light Board Operator

**AARON LORENZ**  
Light Programmer

**ANDREA ARENDS**  
Followspot Operator

**BILLY BORST**  
**BLAKE CORDELL**  
**MEGHAN ERXLEBEN**  
**DANIEL PARSONS**  
**MEGAN TURNQUIST**  
**ART ZARKO**  
Electricians

## SOUND

**JOSEPH E. DISBROW**  
Sound Crew Head

**JOSH MILLICAN**  
SIX Associate Sound  
Designer

**DAN SCHRECK**  
House Sound Technician

**JESSIE SNYDER**  
Sound Technician

**IAN GARRETT**  
**RAFAEL LOZA**  
Sound Crew

## WIGS AND MAKE-UP

**RICHARD JARVIE**  
Wig and Make-up Supervisor

**MIGUEL ARMSTRONG**  
Wig and Make-up Assistant

**MEGAN PIRTLE**  
Wig and Make-up Apprentice

## PROPERTIES

**CASSANDRA WESTOVER**  
Properties Supervisor

**MARA RICH**  
Assistant Prop Supervisor

**LISA GRIEBEL**  
Properties Carpenter

**DAN NURCZYK**  
Properties Crew Head

## OPERATIONS/FACILITIES

**SUSAN KNILL**  
Facilities and Operations  
Director

**JEANNE DeVORE**  
Technology Manager

**DANIEL LOPEZ**  
Assistant Facilities Manager

**FELIX ROSS**  
Custodial Supervisor

**DWAYNE BREWER**  
**FLOYD CONWAY**  
**MARIBEL CUEVAS**  
**RESHARD HUFF**  
**OCTAVIOUS MOODY**  
**TAMAL STEVENS**  
**SHENISE THOMAS**  
Custodial Assistants

## GUEST SERVICES AND EVENTS

**MAKEDA COHRAN**  
Events Director

**CAITLIN DUNLAP**  
Front of House Coordinator/  
House Manager

**VICTORIA GILBERT**  
**JEFFREY GOUGIS**  
**ALEX ROGGOW**  
House Managers

**MEL GILL**  
Concessions Manager

**MICHAEL RUSSELL**  
Assistant Concessions  
Manager

**KATE LASS**  
**JACQUELINE POJASEK**  
Concessions Leads

**DANIEL BALSAMO**  
**REBECCA BOERMAN**  
**TYRA BULLOCK**  
**BYRON COOLIE**  
**ANGELA COTEY**  
**SCOTT COWAN**  
**SARA CROUNSE**  
**NICK CUELLAR**  
**GRACE GLASGOW**  
**TIFFANY GOUGIS**  
**BRITTNEY GRANT**  
**MAYA HOPKINS**  
**ALLIE LYKE**  
**BRI MCCABE**  
**ALEX MEYER**  
**WILL NICHOLSON**  
**DIANNE NORA**  
**ZACHARY PARKHURST**  
**DARA PRENTISS**  
**MAYA PRENTISS**  
**KATIE RANEY**  
**ANTHONY SANTIAGO**  
**SAM SCHNEIDER-BEHEN**  
**STEVE SHREVE**  
**JOEY STARCHER**  
**AUDREY SIMON**  
**EMIL SUECK**  
**NICOLE TINI**  
**HANNAH WILLIAMS**  
**SHONDA WILLIAMS**  
Guest Services Associates

## CONSULTANTS AND SPECIAL SERVICES

**BAKER TILLY VIRCHOW**  
**KRAUSE, LLP**  
Auditor

**SD&A TELESERVICES**  
Fundraising Consultants

**JASCULCA TERMAN**  
Public Relations Consultant

**SMART MARKETING**  
Sales Consultant

**MEDICAL PROGRAM**  
**FOR PERFORMING**  
**ARTISTS/ MARIA E.**  
**REESE, MD**  
Medical Services

**AON PRIVATE RISK**  
**MANAGEMENT**  
Insurance Services

**HUGHES Socol Piers**  
**RESNICK & DYM, LTD.**  
**KIRKLAND & ELLIS LLP**  
**MCDERMOTT WILL**  
**AND EMERY**  
**NEVIN LAW**  
**GROUP, PLLC**  
Legal Services

**REGINA BUCCOLA, PH.D.**  
Scholar-in-Residence

**STEPHEN BENNETT, PH.D.**  
**CASEY CALDWELL, MFA**  
**ELIZABETH CHARLEBOIS, PH.D.**  
**IRA MURFIN, PH.D.**  
**SARAH B.T. THIEL, PH.D.**  
Guest Lecturers

**MICHAEL BROSILOW**  
**JUSTIN BARBIN**  
**BILL BURLINGHAM**  
**LIZ LAUREN**  
**MICHAEL LITCHFIELD**  
**JOE MAZZA**  
**JASMINE OLIVER**  
**CHUCK OSGOOD**  
**VITO PALMISANO**  
**JEFF SCIORTINO**  
**JAMES STEINKAMP**  
Photographers

**HMS MEDIA, INC.**  
**CALVIN STEINKEN**  
Video Production



Where the Sun Sets, the Curtain Rises & the Stars Shine



**PENINSULA  
PLAYERS**  
theatre in a garden

Discover  
Door County's  
Theatrical Treasure  
Greg Vinkler, Artistic Director

JUNE 18 to JULY 7

**A TRICK  
OF THE  
LIGHT**

A world premiere comedy by Peter Moore



AUGUST 21 to SEPT 1

**Silent Sky**

A stellar play by Lauren Gunderson



JULY 10 to JULY 28

**A Murder  
is Announced**

by Leslie Darbon

Adapted from Agatha Christie's novel  
A thrilling whodunit from the Queen of Crime featuring Miss Marple.

JULY 31 to AUG 18

**GHOST**  
The Musical

Book & Lyrics by Bruce Joel Rubin

Music by Dave Stewart & Glen Ballard  
Lyrics by Bruce Joel Rubin

**2019 SEASON**  
**June 18 to October 20**

SEPT 4 to OCT 20

**George  
Washington's  
Teeth**

Adapted by Mark St. Germain



The set of A Little Night Music;  
Photo by Len Villano

[www.PeninsulaPlayers.com](http://www.PeninsulaPlayers.com) 920.868.3287

CHICAGO **SHAKESPEARE** THEATER

**GALA**  
**19**

**20<sup>TH</sup> ANNIVERSARY  
ON NAVY PIER**

**MONDAY, JUNE 10**

SPIRIT OF SHAKESPEARE AWARD  
CIVIC HONOREE

BMO  Harris Bank

ACCEPTED BY

**David Casper**

U.S. CEO, BMO FINANCIAL GROUP



**LEAD CONSORTIUM**  
*in formation as of April 5, 2019*

ANONYMOUS

BMO  Harris Bank

HARVE A. FERRILL

**FOOD & THOUGHT**  
— CATERING GROUP —

BURTON X. AND  
SHELI Z. ROSENBERG

**THE SEGAL FAMILY  
FOUNDATION**

**HOST COMMITTEE**

Allstate  
Jess and Amanda Merten  
Aon  
BlueCross BlueShield  
of Illinois  
Maurice Smith  
Nazneen Razi  
The Boeing Company  
Bulley & Andrews

Kent and Liz Dauten  
Keystone Capital  
Virginia and Gary Gerst  
ITW  
The Jentes Family  
The Family of Jack Karp  
KPMG  
Bill and Char Tomazin

 **Exelon.**

Robin and Steve Solomon

**KIRKLAND & ELLIS LLP**  
Richard Porter and Lydia Marti  
Linda and Dennis Myers  
Joan and Kevin Evanich

Ray and Judy McCaskey  
Northern Trust  
John W. and Jeanne M. Rowe  
Skadden, Arps, Slate,  
Meagher & Flom LLP  
Brian and Yasmina Duwe  
Carl and Marilynn Thoma

For sponsorship opportunities or more information, please contact Kristen Caruso at  
312.595.5587 or [kcaruso@chicagoshakes.com](mailto:kcaruso@chicagoshakes.com), or visit [www.chicagoshakes.com/gala](http://www.chicagoshakes.com/gala)



# LOVE THEIR STORIES? BE PART OF OURS!



The company of S/X; photo by Jeff Sciorino

## YOUR GIFT TO CHICAGO SHAKESPEARE:

- Makes thrilling new productions like *S/X* possible
- Underwrites award-winning education programs
- Supports free Shakespeare in communities across our city
- Brings renowned international artists to Chicago

**chicago**  
**shakespeare**  
on navy pier theater

## THREE EASY WAYS TO DONATE

- 📍 [www.chicagoshakes.com/support](http://www.chicagoshakes.com/support)
- 📞 312.667.4952
- ✉ Chicago Shakespeare Theater  
800 East Grand on Navy Pier  
Chicago, IL 60611

## Community Partners

Chicago Shakespeare Theater is honored by the support of these leading business and civic partners, whose generosity demonstrates a commitment to enriching our vibrant Chicago community. We are pleased to recognize these organizations for their dedication to artistic excellence, innovative approaches to enhancing education, and impactful community outreach initiatives.

*Reflects gifts received between July 1, 2017-April 11, 2019*

### GUARANTORS

\$100,000 & ABOVE

Arc Worldwide  
BMO Harris Bank  
The Boeing Company  
ComEd  
The Davee Foundation  
Julius Frankel Foundation  
Elizabeth Morse Genius Charitable Trust  
Land O'Frost  
The Robert R. McCormick Foundation  
Prince Charitable Trusts  
Rhoades Foundation Fund at The Chicago  
Community Foundation  
The Harold and Mimi Steinberg Charitable Trust  
TAWANI Foundation  
Thoma Bravo

### BENEFACTORS

\$50,000-\$99,999

Allscripts  
Paul M. Angell Family Foundation  
Anonymous  
A.N. and Pearl G. Barnett Family Foundation  
BlueCross BlueShield of Illinois  
Embassy Suites Chicago  
Downtown Magnificent Mile and  
DoubleTree Magnificent Mile  
Exelon  
Food For Thought  
Lloyd A. Fry Foundation  
Illinois Arts Council Agency  
ITW  
Kirkland & Ellis LLP  
KPMG LLP  
The John D. and Catherine T. MacArthur Foundation  
National Endowment for the Arts  
Polk Bros. Foundation  
The Shubert Foundation  
Shure Incorporated

### SUSTAINERS

\$25,000-\$49,999

Allstate Insurance Company  
American Express  
Anonymous  
Aon  
Bartlit Beck Herman Palenchar & Scott LLP  
BP America  
Helen Brach Foundation  
Bulley & Andrews  
Elizabeth F. Cheney Foundation  
Chicago Shakespeare Theater Fund  
at The Chicago Community Trust  
The Chicago Community Trust



**\$25,000–\$49,999**  
(continued)

City of Chicago Department of  
Cultural Affairs and Special Events  
The Crown Family  
The Grover Hermann Foundation  
HMS Media, Inc.  
JLL  
Mazza Foundation  
Peoples Gas  
Razny Jewelers  
Shakespeare in American Communities:  
National Endowment for the Arts  
in Partnership with Arts Midwest  
Skadden, Arps, Slate, Meagher & Flom LLP

**\$10,000–\$24,999**

Accenture  
John R. Halligan Charitable Fund  
Harris Family Foundation  
The Irving Harris Foundation  
Intersection  
MAST Travel Network  
Newcastle Limited  
Northern Trust  
PNC  
PwC  
The REAM Foundation  
Ropes & Gray LLP  
SageGlass  
Segall Bryant & Hamill  
Phil Stefani Children's Foundation  
William Blair  
Wintrust

**\$5,000–\$9,999**

Anonymous  
Chicago Public Media  
Dr. Scholl Foundation  
GCM Grosvenor  
Hall's Rental Service  
The Pauls Foundation  
Peoria Area Convention & Visitors Bureau  
RLI Corporation  
Scorpio Rising Fund  
Charles and M. R. Shapiro Foundation, Inc.

**\$1,000–\$4,999**

BBJ Linen  
Broco Partnership  
CGN Global  
Commerce Bank  
Communications Direct  
David Vaughan Investments, LLC  
Ernst & Young, LLP  
Forefront  
The James Huntington Foundation  
Kovler Family Foundation  
Make It Better Media  
Make-up Provided by M•A•C  
McGuireWoods LLP  
MDR Creative  
National Alliance for Musical Theatre's  
Frank Young Fund for New Musicals  
RSM McGladrey, Inc.  
SolarWinds  
St. Jane Chicago

# Shakespeare Society

Members of the Shakespeare Society provide vital annual support to sustain Chicago Shakespeare Theater's mission. The commitment of these steadfast individuals helped to build a home for Shakespeare in Chicago that has endured for the past three decades. We are deeply grateful for their extraordinary investment in the Theater's guiding principles to serve as a cultural leader, citizen, and ambassador for our city.

*Reflects gifts received between July 1, 2017–April 11, 2019*

**\$100,000 & ABOVE**

Anonymous  
Ken Griffin  
Ray and Judy McCaskey  
Burton X. and Sheli Z. Rosenberg  
Carl and Marilyn Thoma  
Donna Van Eekeren Foundation

**\$50,000–\$99,999**

Anonymous  
Joyce Chelberg  
Kent and Liz Dauten  
Harve A. Ferrill  
Virginia and Gary Gerst  
Jan and Bill Jentes  
Anna and Robert Livingston  
Linda and Dennis Myers  
Madhavan and Teresa Nayar  
Sheila Penrose and Ernie Mahaffey  
Richard W. Porter and Lydia S. Marti  
John W. and Jeanne M. Rowe  
Timothy R. Schwertfeger and Gail Waller  
The Segal Family Foundation  
Barbara and Barre Seid Foundation

**\$25,000–\$49,999**

Ada and Whitney Addington  
Julie and Roger Baskes  
Thomas L. and Cairry S. Brown  
Susan E. and Duane L. Burnham  
Mr. and Mrs. Lester Crown  
Conant Family Foundation  
Eric's Tazmanian Angel Fund  
Jeanne Ettelson  
Barbara and Richard Franke  
Greg Gallopoulos  
James and Brenda Grusecki  
The Family of Jack Karp  
Judith Loseff  
Malott Family Foundation  
Bob and Becky McLennan  
Barbara Molotsky  
Christopher and Erin O'Brien  
Mark Ouweleen and Sarah Harding  
Peter and Alicia Pond  
J.B. and M.K. Pritzker Family Foundation  
Glenn and Danielle Richter  
Patrick G. and Shirley W. Ryan Foundation  
Harvey and Mary Struthers  
Gayle and Glenn R. Tilles  
Pam and Doug Walter

# Individual Contributors

Thanks to the contributions of CST's family of donors, we can continue to delight audiences in Chicago and around the world through our trademark approach to theater that is inspired by the spirit of Shakespeare. Annual donations offset the substantial expense of producing theater of uncompromising quality and ambition. In recognition of the enhanced level of support provided by our Bard Circle donors of \$1,000 or more, CST provides exclusive privileges and behind-the-scenes access.

*Reflects gifts received between July 1, 2017–April 11, 2019*

## BARD CIRCLE AMBASSADORS \$10,000–\$24,999

Anonymous (4)	Jim and Karen Frank	Steve and Peggy McCormick	Eric Q. Strickland
Frank and Kathy Ballantine	J. Friedman	Mr. Jonathan E. Michael	Helen and Richard Thomas
Barnard-Fain Foundation	Joan M. Hall	Edward and Lucy R. Minor	Bill and Char Tomazin
Kate Blomgren	Hill and Cheryl Hammock	Foundation	The Walker Family
Andrew and Amy Bluhm	Kimberlee S. Herold	Dr. Martha Nussbaum	Charitable Fund
Tuey and Karen Connell	David Hiller	Paulita Pike and	Whiting Family Foundation
John P. Davidson and	The Jaquith Family Foundation	Zulfiqar Bokhari	Elizabeth Yntema and
Shirley A. Schaeffer	John and Judy Keller	Sal and Nazneen Razi	Mark Ferguson
Brian and Yasmina Duwe	Mr. and Mrs. Richard A. Kent	Mary Thomson Renner	Ronald and Geri Yonover
John Edelman and	Anstiss and Ronald Krueck	Muneer Satter and	
Suzanne Krohn	Chase and Mark Levey	Kristen Hertel	
Joan and Kevin Evanich Paul	Michael Charles Litt	Judy and David Schiffman	
and Mary Finnegan	Lew and Susan Manilow	Steve and Robin Solomon	

## BARD CIRCLE FELLOWS \$5,000–\$9,999

Charles and Gayla Allen	Nellie and Sheldon Fink	Naja Maltezos	Chuck Simanek and
Anonymous (2)	Mimi and Bud Frankel	George and Roberta Mann	Edna Burke
Andrea Atlask	Barbara Gaines	Renetta and Kevin McCann	Dick Simpson
Carey and Brett August	Ethel and Bill Gofen	Amanda and Jess Merten	Bill and Orli Staley
Janice and Philip Beck	Joan Golder	Pamela G. Meyer	Jennifer Steans and
John Blazey	William and Anne Goldstein	Ellie and Bob Meyers	Jim Kastenholz
Mr. & Mrs. Norman Bobins,	Mary L. Gray	Mr. and Mrs. James F. Miller	Ms. Jodi Stephens
The Robert Thomas	Ms. Karen Z. Gray-Krehbiel	Mike and Adele Murphy	Dr. and Mrs. Peter W.
Bobins Foundation	Marguerite H. Griffin	Howard and Sandra	Stonebraker
Herbert Boynton	Linda and Jeffrey Hammes	Nagelberg	Marjorie and Louis Susman
Stephen and Elizabeth	Kathryn Hayley and	Mr. and Mrs. Lee Oberlander	Sandra Sweet and
Brodsky	Mark Ketelsen	Dennis Ollis	Mira Frohnmayer
The Brodsky Family	Criss Henderson	Charles and Susan Patten	Mark Thoma
Barbara and Jim Bronner	Carole and Phillip	Connie and Don Patterson	Richard and Elaine Tinberg
Fund of the Yampa Valley	Hildebrandt	Michael Payette and	Howard J. Trienens
Community Foundation	Ken Hitz	George Mariner	Brady Twiggs
Mr. and Mrs. Allan E. Bulley III	Denise and Adam Hoeflich	Edward R. Philipp	Pallavi Verma
Richard and Ann Carr	Holson Family Foundation	John and Betsey Puth	Mike Walker
Amy and Jamie Chesser	Stewart Hudnut and	John and Colette Rau	Dan and Patty Walsh
Clive and Nicola Christison	Vivian Leith	Richard Rosenberg	Richard and Diane Weinberg
Jim and Linda Connor	Stacie and Richard	D. Roskin	Linda and Michael Welsh
Spark Cremin and Paul	Immesberger	Linda and David Ross	The Wesselink Family
Dykstra	Fruman, Marian, and	Dr. and Mrs. James	Foundation
Patrick Richard Daley	Lisa Jacobson	Scheffler, M.D.	Ray and Donna Whitacre
Shawn M. Donnelly and	Kirk and Cheryl Jaglinski	Patricia and David Schulte	Stuart and Diana Widman
Christopher M. Kelly	Christie and John Kelly	Robin and Tim Sheehan	Bobbi Zabel
Bruce and Marnie Duff	Klauff Family Foundation	Louis and Nellie Sieg Fund	William R. Zimmer, M.D.
La and Philip Engel	Sanfred and Nancy Koltun		

## BARD CIRCLE PATRONS \$2,500–\$4,999

Laura and David	Anonymous (3)	Brian Burrows	Robert A. and Iris J. Center
Abrahamson	Mike and Mary Baniak	Catherine and Jeffery	Stanley D. Christianson
James L. Alexander and	Trish and Bob Barr	Cappel	Jane Christino and
Curtis Drayer	Drs. Gregory Boshart and	Stephen C. and Patricia B.	Joseph Wolnski
Mr. Ken Anderson	William Lawrence	Carlson	Bill and Alexandra Cole

Keith S. Crow and Elizabeth	Elizabeth Hogan and	Mr. and Mrs. Andrew J.	The Schroeder Foundation
Parker Crow	Louis Chan	McKenna	Erich and Judy Schwenker
David and Eileen	Jim and Mary Houston	Mr. and Mrs. Gregory	Judy and Thomas Scorza
Donnersberger	Hurckes Family Foundation	Melchor	Kenneth Sharigian
Phillip and Marsha Dowd	Leland Hutchinson and	David and Diana Moore	Michael and Linda Simon
Dr. and Mrs. James L.	Jean Perkins	Catherine Mouly and	Michael and Sharon Sloan
Downey	Elizabeth Raymond and	LeRoy T. Carlson, Jr.	Julia Smith and
John Duncan and	Paul Hybel	Linda Orellana	Ira Bodenstein
Anita Sarafa	Terrell and Jill Isselhard	Mr. John Jendras and	Lynne and Allan Reich
George Engeln and	Edgar D. Janotta	Ms. Judith A. Paice	David Stafford and
Denise Stewart	Donald and Susan Jeffers	Mona Penner	Marcia Richards
R. Scott and Kimberly Falk	Ronald B. Johnson	Karen Pierce and	Mr. and Mrs. Harrison I.
Mrs. Sylvia Neil and	Judith L. Kaufman	Carey Weiss	Steans
Mr. Daniel Fischel	Jen and Brad Keck	Steven Plevin	Ned Stebbins
Lois Farrell Fisher	Frederic S. Lane	Andra and Irwin Press	Stan and Kristin Stevens
E. Brooke Flanagan	Susan and Richard Lenny	C. James and Karen Prieur	Janet Surkin and
Willard and Anne Fraumann	Mary and Larry Mages	Wendy and Jeffrey Puglielli	Robert Stillman
Patricia and Martin Freeman	Michael and Anne Malone	Diana and Bruce Rauner	Kimberly K. Taylor
The Gerlits Family Fund	Helen Marlborough and	Ann and Robert Ronus	Mr. and Mrs. William R.
Peter and Beth Goodhart	Harry Roper	Deborah and Jeffrey S. Ross	Tobey, Jr.
Sue and Melvin Gray	McCabe Family Foundation	Bruce Sagan and Bette C. Hill	John and Maribeth Totten
Ann and Doug Grissom	Michael McCaslin and	Bettylu and Paul Saltzman	Gretchen W. Vacendak
Gene and Nancy Haller	Patrick Ashley	John M. Savko and	Paul and Mary Yovovich
Dorothy and Richard Harza		Deborah J. Hodges	Mr. Thomas Zimmerman

## BARD CIRCLE PARTNERS \$1,000–\$2,499

Richard and Janice Aaron	Peter and Kathy Bresler	Steve and Sallie DeAngelo	Richard Harris Fawell
Margery Al-Chalabi	Robert and Joell Brightfelt	Nancy Dehmow	Amy Fielek
Dominic and Kathryn	Dustin Smallheer and	Wilma and Michael Delaney	Cameron and Amy Findlay
Allocco	Dottie Bris-Bois	Lawrence DelPilar and Kevin	Peter Fischer and
Richard and Suzanne Altizer	Ms. Francia Harrington and	McCullough	Joanne Roddy Fischer
Mrs. Mary Alukos	Mr. Vern Broders	Mr. Paul Dengel and	Joan Flashner
James and Sheila Amend	Dirk Brom and Kim Russel	Ms. Paula J. Morency	Henry and Frances Fogel
Mrs. Gene G. Andersen	Douglas R. Brown and	William DeWoskin and	Adrian Foster
Judith and Harold Anderson	Rachel E. Kraft	Wendy S. Gross	Ms. Lucinda Fox and
Robert C. Anderson	Mr. and Mrs. George M.	Evelyn J. Diaz	Mr. John Mancini
Anonymous (12)	Brown	Mr. and Mrs. Byram Dicks	Bon T. French
Dalia and Jurgis Anysas	Sandy and Ed Burkhardt	Mary Anne Difatta	Judy and Abel Friedman
Robert and Lynn Arensman	Anne Cadigan	Roberta S. Dillon	Sharon Fritz
Pamela C. Atkinson	Ed Calkins	Tom Dimond	Dr. Willard Fry
John and Debra Austin	Marion A. Cameron	Wendy Doniger	James and Paula Furst
Babington Family	Michael L. Cardinale and	Carole and Peter Doris	J. Patrick and Anne M.
Mary and Nick Babson	Autumn L. Mather	Jill A. Dougherty	Gallagher
Edgar H. Bachrach	David and Orit Carpenter	Leslie Douglass	Sean and Susan Gallagher
The Baila Foundation	Edward Caveney	Joan Govan Downing	Susan Mabrey Gaud
Stephen and Susan Baird	John Challenger	Rita Dragonette	Stephen and Elizabeth Geer
Foundation	Thomas Clancy and	Ingrid and Rich Dubberke	Lolly and John E. Gepson
Pamela Baker	Dana Green	Michael and Debra Duffee	C. Graham and Christy Gerst
Katherine A. Balek	Rev. Dr. Jane A. Clark and	Dr. and Mrs. W. Brian Duffy	Joyce and Allen Gerstein
Barbara Barzansky	Mr. Michael A. Clark	Drs. George Dunea and	Mr. and Mrs. James J. Glasser
Ron Bauer Design Inc.	Jane and John Colman	Sally Dunea	Honey Lynn Goldberg
Daniel and Michele Becker	Lawrence Corry	Kathy Dunn	Jennifer and Isaac Goldman
Mrs. Elizabeth Becker	Andrew and Carmela Corsini	Thomas and Martha Dwyer	Gordon and Nancy
Michael and Diane Beemer	Patricia Cox	Dorne and Stephen	Goodman
C. Bekerman, M.D.	Mr. Pete Coyle	Eastwood	Jim Goodridge and
Linda Finley Belan and	Earle G. Cromer, III	Kitty Egan	Joan Riley
Vincent Kinehan	Ms. Laura Cullinan	Jan Elfine	John F. Gordon and
Bruce Bellak	Mr. Mike Cullinan	Bill Salvato	Bill Salvato
Judson and Susan Bergman	Charles Custer	Dr. Brenda Eriksen	Rabbi Samuel Gordon and
Leigh and Henry Bienen	Ellen and James Dalton	Mark and Amy Erkenwick	Patty Gerstenblith
Richard and Heather Black	John and Larry Damron	Donald and Jane Gralen	Donald and Jane Gralen
Frances and Ed Blair	Paula E. D'Angelo	Sue S. Ettelson	Linda D. and Craig C.
Shaun and Andy Block	Judy and Tapas K.	Patti Eylar and	Grannon
Philip D. Block III Family	Das Gupta	Charlie Gardner	Barcy Grauer
Fund at The Chicago	Norma E. Davis Willis	Elizabeth Lidd Factor, Esq.	Michael Greenwald
Community Foundation	Scott and Anne Megan	Jeff Farban and Ann	Jill and David Greer
Paul and Sue Brenner	Davis	Greenstein	Paul Grossman



Marjorie E. Habermann  
Mary E. Hafertepe  
Robert Hanlon and  
Barbara MacDowall  
Kathy Harrington and  
Charlie Moles  
Dr. Robert A. Harris  
Mary J. Hayes  
Beverly and Warren Hayford  
Howard Heath  
Heestand Foundation  
Ross C. and Andrea Heim  
Richard and Dianna Heinz  
George and Susan Heisler  
Bob and Janet Helman  
Catherine and Jack  
Herrmann  
Mr. and Mrs. Mark C. Hibbard  
The Hickey Family  
Foundation  
Donald E. Hilton and  
John Buscemi  
Sherry and Arnold Hirsch  
Gail and Tom Hodges  
Bill and Vicki Hood  
Karen and Tom Howell  
John E. Huguenard  
Patricia J. Hurley  
Joseph and Ginia Jahrke  
Pam and Paul James  
Davis Jenkins  
Jentes Family Foundation  
Nancy and Christopher  
Johnson  
Richard K. Johnson and  
Marybeth Dougherty  
Russell N. Johnson and  
Mark D. Hudson  
Lynn and George Jones  
Mrs. Michael and Abhilasha  
Jones  
Peter H. Jones and  
Marian Pearcy  
Ms. Susan M. Junkroski  
Debra and Chuck Kent  
Kathryn and Bill Kerr  
Ms. Krystyna Kiel and  
Mr. Alexander Templeton  
Michael Kiley  
Paul and Raye Koch  
The Koldyke Family Fund  
Kurtis Kossen  
Bonnie Krasny  
James and Carolyn Krause  
Michele Kurlander  
Patrick R. Lagges  
Trudy and Michael Landwirth  
Ed and Mary Langbein  
Aaron and Ariadna Lanski  
Mr. and Mrs. Eric Larsen  
Bradley Larson  
Ruth W. Lekan  
Joanie and Richard Leopold  
Barry Levenstam and  
Elizabeth Landes  
Laurie and Gerry Levin  
Mark Levine and  
Andrea Kott  
Mark Liberson

Mrs. Carole F. Liebson and  
Dr. Philip R. Liebson  
Jane and Richard Lipton  
Diane and Bill Lloyd  
John H. Long and  
Nona Harrison Long  
Allen Loomis  
Jim and Kay Mabie  
Martha and John Mabie  
Charlene and Gary  
MacDougall  
Jolie Macier and  
James Niehoff  
Paula and Jeffrey Malak  
Mike Malone and Todd  
Zimmerman  
Stephen and Susan  
Bass Marcus  
Faye Marlowe  
Roland and Adele Martel  
Drs. Anette and John Martini  
Doretta and Robert Marwin  
William Mason and  
Diana Davis  
Steve and Lynn Mattson  
Judy and John McCarter  
Mr. John F. McCartney  
Kelly McCray and Donald  
Mays  
The Howard and Kennon  
McKee Charitable Fund  
Dr. William McMillan and  
Dr. Jane McMillan  
Swati and Siddharth Mehta  
Helen Melchior  
Dr. Janis Mendelsohn  
Madonna and John Merritt  
Mary Donners Meyer  
Tim Michel and Amy Laiken  
Dana Mikstay and  
Ronna Hoffberg  
Judith and Robert Miller  
Nathan Miller  
Family of Nancy and  
Henry Mills  
Laura Mishkin  
Dr. Marilyn Mitchell  
Susan Mitchell  
Tom and Rosemarie Mitchell  
Bev and Dick Moody  
Corinne Morrissey  
Steven W. Morris  
Heather Morrison  
Mr. and Mrs. Robert S.  
Morrison  
Milan Mrksich  
Sandra L. Mueller  
Margaret Edith Murphy  
John Andrew Nagy  
Hari and Mary Nair  
Hope G. Nightingale and  
David Ellis  
Zanna and Aram Nikitas  
John K. Notz, Jr.  
Mr. Bernard Nusinow  
Bill and Penny Obenshain  
Mr. and Mrs. James J.  
O'Connor  
Barbara and Daniel O'Keefe

## CHICAGOSHAKESPEARETHEATER BARD CIRCLE MEMBERSHIP

**JOIN TODAY**  
for the ultimate  
Chicago  
Shakespeare  
experience!

Your Bard Circle membership provides you with VIP ticketing and intermission service, as well as intimate events with the world's leading theater artists.

By making a leadership gift of \$1,000 or more, you can directly support the extraordinary productions on our stages and our work throughout the community.

To learn more about the Bard Circle, please contact  
Dottie Bris-Bois, Associate Director of Development  
dbrisbois@chicagoshakes.com | 312.667.4965

Sarah and Wallace Oliver  
Mr. and Mrs. Norman  
Olson, Jr.  
Jonathan F. Orser  
Mr. and Mrs. Bruce Ottley  
Harper Pack  
Jay Paladugula and Aparna  
Votkur  
George and Peggy  
Pandaleon  
Drs. Allen L. and Georga  
Parchem  
Robert K. Parsons and  
Victoria J. Herget  
Jenny and Scott Pattullo  
Wendy and Hank Paulson  
Thomas Pawlik and  
Ava Cohn  
Brent and Marina Payne  
Jason and Jackie Peltz  
Carol Pennel  
Kathleen Picken  
Joe Piszczor  
Joseph P. Gaynor and  
Victoria Poindexter  
Michael and Christine Pope  
Lisa S. Portnoy  
David and Valeria Pruett  
Abdul and Rita Qaiyum  
Mr. Andrew Rand  
Sandra Davis Rau  
Sam Razi and Julie Zhu  
Peggy and Phil Reitz  
Dave and Ellen Rice  
Louise Robb  
William and Cheryl Roberts  
Edmund and Carol Ronan  
Ed Roob  
Alexander and Anne Ross  
Bob Kunio and Libby Roth

Joseph O. Rubinelli, Jr.  
Mr. Sid Ruckriegel  
Dr. Patricia Rywak  
Jane Nicholl Sahlins  
Angelique A. Sallas, Ph.D.  
Larry Salustro  
Joanne Arden Sarasin and  
Brad Soren  
Robert P. Schaible  
Nancy and Jon Schindler  
April and Jim Schink  
Bonnie and Roger Schmidt  
David and Stephanie  
Schrodt  
Shauna Scott and J. Parker  
Hall, IV  
Maryellen and Thomas Scott  
James M. Sears  
Ralph and Nancy Segall  
Richard and Betty Seid  
Dr. Mridu Dore Sekhar  
Jan and Emanuel Semerad  
Jill and Mike Severino  
Andrew H. Shaw and Martha  
A. Peterson Charitable  
Fund  
The Ilene and Michael Shaw  
Charitable Trust  
Brian and Melissa Sherman  
Richard Neville and  
Karen Shields  
Jack Siegel and  
Evelyn Brody  
Craig Sirles  
Maureen Slater  
Hilltop Wealth Management  
of Raymond James  
Richard Smart and  
Sheila Owens  
Chuck Smith

Gail and Russell G. Smith II  
Mr. Marc Smith  
Maurice Smith  
Joan Sorensen  
Richard and Nancy Spain  
Deborah Spertus  
Philip and Sylvia Spertus  
Courtney A. Spillers  
Bryan and Cathy Sponsler  
David and Ingrid Stallé  
Cheryl Steiger and  
Kevin Noonan  
Penelope R. Steiner  
Carol D. Stein and  
James S. Sterling  
Nancy and Bruce Stevens  
Liz Stiffel  
Donna and Tom Stone  
Andrew Sudds and  
Kristin E. Cowley  
Jim Swanson and  
Maria Montalvo  
Judy Swiger  
Dr. James V. Talano  
Rona Talcott and  
Owen Deutsch  
Sheila G. Taltan  
Michele Thomure  
Chris and Stephanie  
Thornton  
Lawrence E. Timmins Trust  
Philip and Becky Tinkler  
Stephanie and John Tipton  
Joanne Tremulis  
Joanne Troutner  
Gary Tubb  
Henry and Janet Underwood  
Anne Van Wart and  
Michael Keable  
Todd and Cari Vieregg

Robert and Camille  
Von Dreele  
Mr. Jay Vonachen  
Matt and Lesley Vonachen  
Mr. and Mrs. Clark L. Wagner  
Mary Kay Walsh  
Roberta and Robert  
Washlow  
David Wasserman, M.D.  
Chuck and Laurie Weaver  
Miranda Wecker  
Howard and Marilyn Weiss  
Albert and Sherrie Weiss  
Brian and Sheila Whalen  
Steve and Bonnie Wheeler  
Jacqueline White  
Lisa and Randy White  
Barbara Williams and  
Martin Perry  
Carol Williams  
David Vaughan  
Investments, LLC  
Mr. Dan Wilson and  
Mrs. Kit Mahlman  
Fritz V. Wilson  
Gary and Modena Wilson  
The Winsor Family  
Duain Wolfe  
Harold Woodman  
Steve and Arna Yastrow  
Stephanie Zabela and  
Jamie Obermeier  
Ann Ziegler  
William Ziemann

## COLLEAGUES \$500-\$999

Mr. and Mrs. William  
Adams IV  
Karen B. Alexander  
Ms. Carol L. Anderson  
Gregg and Karen Anderson  
Anonymous (13)  
Anna Anrod  
Erin Archer  
Doctors Andrew and  
Iris Aronson  
Bonnie A. Barber  
Lauren and Rick Barnett  
Mr. and Mrs. Scott Baskin  
Sandra Bass  
Judith Baxter and  
Stephen Smith  
Simeon Peebler and  
Kirsten Bedway  
Joan Israel Berger  
Harriet K. Bernstein  
Jim Best  
Rene Cornejo and  
Allegra Biery  
Ms. Lynne Blanton

Elizabeth and David  
Blinderman  
Joanne Gazarek and  
Chris Bloom  
Lewis Brashares  
Ms. Ann Bratton  
Deborah B. Braxton  
Richard H. Brewer and  
Mary Ann Schwartz  
Gregory Brinkman  
Lea Brookes  
Judy and John Bross  
Alan and Carol Brown  
Margaret Scanlan Brown  
Buck Creek Fund  
Chris Bucko and Eva Wu  
John Byrd  
Janet Carl Smith and  
Mel Smith  
Austin Carpenter  
Antonio Casanova and  
Megan Ledbetter  
Virginia R. Cassidy  
Marge and Maurice  
Champagne

Larry and Julie Chandler  
Tim Chapman and  
Sandy Jordan  
Dr. Ira and Mrs. Carol  
Chasnoff  
Thomas E. Chomicz  
Mike Charles Christ  
Timothy and Theresa  
Coburn  
George and Minou Colis  
Mr. and Mrs. Howard Conant  
Ms. Nancy Raymond Corral  
Roy Cowell  
Barbara Flynn Currie  
Ellen and Jim Dalton  
Anne and Malachy Daly  
Marilyn Darnall  
Marijane Deters  
Mr. and Mrs. Charles Doherty  
Ms. Kim Douglass  
Ronald B. Duke  
Mr. and Mrs. Jose Duran  
Barbara and John Eckel  
Melanie Ehrhart  
Terry and Judith Feiertag

Karen and Chris Felix  
Mr. Carl Fisher and  
Dr. Linda Fisher  
Mr. and Mrs. Patrick Fisher  
Deborah Flattery  
Foley Family Foundation  
Amanda Fox  
Timothy and Janet Fox  
James and Silvia Franklin  
Judith R. Freeman  
Joan A. Gall  
Denise Michelle Gamble  
Ann Gardner and  
Irene Wasserman  
Dr. Tracey M. Gau  
Nancy Gavlin  
Ms. Nancy S. Gerrie  
Arlene and Camillo Ghiron  
Margaret Gielniewski  
Carol and Jeffrey Glassroth  
Jaye and John Golanty  
Mr. and Mrs. Robert M.  
Gordon  
Robert J. Gorski  
Philip and Suzanne Gossett

Donald and Jane Gralen  
Charles Grode  
Carol and Solomon Gutstein  
Mr. and Mrs. John W. Hammerschlag  
Bruce Handler  
Mark and Lori Harris  
Lois and Donald Hartung  
Jane A. Hawksley  
Christie Hefner  
Mary Ellen Hennessy  
Mair and Rich Hill  
Mrs. Mary P. Hines  
Drs. Stevan and Ivonne Hobfoll  
Brian Horwood and Mary Beth Berkoff  
Gene Hotchkiss  
Professor and Mrs. Clark Hulse  
Mario and Giovanna Imbarrato  
John D. Jawor  
Steven A. Johnson  
Rande and Vance Johnson  
Eric and Laura Jordahl  
JS Charitable Trust  
Patricia and James Jurgens  
Daniel and Faye Kachur  
Joan Kacmar  
Barry and Vicki Kaufman  
Brendan and Karmen Keane  
Nancy and Don Kempf  
Ms. Emily Kessler  
Lynn and Jim Kiley  
Frank and Katherine Kinney  
Barbara and David Kipper  
Thomas and Margaret Kittle-Kamp  
Jane and Paul Klénck  
Paul Kobasa  
Lisa Kohn and Harvey Nathan  
Electra D. Kontalonis

Mr. and Mrs. Robert Korajczyk  
The Korycki Family  
Kevin A. and Joanne C. Krakora  
Donna LaPietra and Bill Kurtis  
Dr. and Mrs. Richard Lariviere  
The Lees Family  
Lew and Laurie Leibowitz  
Judy and Stephen Levin  
Valerie Kolis and Peter Livaditis  
Michael and April Ljung  
Jim and SuAnne Lopata  
Karyn B. Lutz  
Barry MacLean  
Ed and Linnea Martin  
Charles Mauter  
Mr. Robert May  
Scott McCausland  
Ann McDermott  
Stephen J. and Rita McElroy  
Terry J. Medhurst  
Judy McGuire  
Bill Melamed and Jamey Lundblad  
Ernst Melchoir  
Daniel Meyer  
Marilu Meyer  
Pat and Ronald S. Miller  
Rick and Joyce Morimoto  
Mr. J. Thomas Mullen  
Elliot Golovkin and Charlotte Murray  
Catherine Nessinger  
Daniel O'Neill  
Jim and Sharon O'Sullivan  
Mr. and Mrs. John Patience  
Ilene Patty and Tom Terpstra  
James Pellegrino  
Peggy Pendry  
Viktoras Petrolunas

Charles and Mary Phillips  
Lyneta Grap Piela  
Matt Plumb  
Dr. and Mrs. Richard A. Prinz  
Toni and Brett Pritchard  
Eva and Gary Quateman  
Jeanne and John Quinn  
Norm and Helene Raidl  
Mr. John Raitt  
Teresa Ramos  
Mark and Nancy Ratner  
Polly and Kenneth Rattner  
Sandra and Ken Reid  
Mr. and Mrs. Gregg Revak  
Ms. Elspeth Revere  
Marilyn and Guy Revesz  
Robert J. and Barbara A. Richards  
Mario and Brenda Rizzo  
Beth and John Roffers  
Martha Roth and Bryon Rosner  
Sidney and Alexandra Roth  
Maija and Jay Rothenberg  
Norman J. and Alice E. Rubash  
Sandra and Eric Ruskoski  
Susan and Edward Schiele  
Barbara and Lewis Schneider  
Ralph and Donna Schuler  
Larry and Natalie Schumacher  
Steve and Karen Sever  
John and Kay Shaw  
Mac and Joanne Sims  
Mr. William Singer and Ms. Joanne Cicchelli  
Mr. Gregg Skalinder and Mrs. Barbara B. Kreader  
Bonnie and Don Slavicek  
Christine Sloan  
James and Mary Jo Slykas  
Richard and Sharlene Smith

Kathleen and Brian Spear  
Sue E. Stealey  
Nikki and Fred Stein  
Heather and Randy Steinmeyer  
Mr. and Mrs. Wallace J. Stenhouse, Jr.  
Susan Stone  
Sylvia and Joe Stone  
Caryn Straus  
Lois and Richard Stuckey  
Jerry Szatan and Katherine Abbott  
Pat and Deena Talano  
Susan C. Taylor  
Harrison and Marilyn Tempest  
Hal Temple and Haruo Kurokawa  
Ms. Laura Torphy  
James M. and Carol D. Trapp  
Edith and Edward Turkington  
Ellen Voda  
Jeff and Paula Waterman  
Richard and Karen Weiland  
John and Connie Wesley  
John W. Wheeler  
P. Wheeler  
Marc and Tracy Whitehead  
Mr. Chad Williams and Dr. Amy Williams  
Diana Williams  
Jan Williams  
Marilyn and Richard Williams  
Mr. and Mrs. George Winkler  
Dr. Jenny Wojcik  
Susan and Michael Wolz  
Jeffrey and Claudia Wood  
Kevin Yaussy  
Susan Youdovin  
Christine Zrinsky

Dr. Emil Coccoaro and Anne Miles  
Ben and Aurelia Cohen  
Dr. James and Mrs. Susan Cohn  
Jerry and Josephine Conlon  
Joel Cornfeld  
Ms. Alma Corona  
Kim and Vera Cory  
Tim Couch  
Chrissy and William Cox  
Caroline P. Cracraft  
Bruce K. Crowther  
Chris and Steve Cusack  
Mr. and Mrs. Tom Daugirdas  
Julia Davidson  
Celeste H. Davis  
Ms. Roxanne J. Decyk  
Samantha Dekoven  
Gregory Desmond and Michael Segobiano  
Donald Deutsch  
Jerome and Jacqueline Dienstag  
Joseph Ditoro  
Deborah Domain  
Patricia and Leonard Dominguez  
Paula and Ronald Domskey  
Dianne Duner  
Doctors Deirdre Dupré and Robert Golub  
Bob and Janet Eder  
Ezra, Magdalene, and Zed Eisenberg  
Crystal Rivas and Adrian Espinosa  
Linda C. Fairbanks and Jeanne DeVore  
Edith and Gerald Falk  
Mary and Paul Favaro  
Roger and Eleanor Feldman  
Nancy Palm Felton-Elkins  
Madeleine Fern  
Eric and Lana Ferren  
Carol Fessenden  
Elizabeth Fieweger  
Peggy Firestone  
Mr. and Mrs. Gregory Fisher  
Dale Fitschen  
David B. Flax  
Marcia L. Flick  
James E. Flinn  
Steph and Tom Formolo  
Ms. Linda Fornell  
Marya Frankel  
Patricia Freeman  
Martin Friedman and Peggy Casey-Friedman  
Merle Friedman  
Richard Furnstahl  
Bryna and Edward Gamson  
Les and Katrina Garner  
Lisa Gates  
Mr. and Mrs. Michael and Sally Gibbs  
Debra Gineris  
Patricia and James Gladden  
Gerry and Stan Glass

Dr. Paul Glickman  
Eunice and Perry Goldberg  
Steve and Carolyn Goldhaber  
Sylvia G. Gordon  
The Goren Family  
Tom and Claire Goulding  
Timothy and Joyce Greening  
Marguerite J. Grizzi  
Ms. Monica Grobler  
Robyn and David Grossberg  
Jessica G. Grové and Dan Cooney  
Samuel Hadden  
Ms. Waverly Hagey-Espie  
Mr. and Mrs. Edward Hamburg  
Chester and Phyllis Handelmann  
Judith Hanlon  
Michael Hansen and Nancy Randa  
Virginia M. Harding  
Greg Lewis and Mary Strek  
Dr. Victoria F. Harris  
Camilla Hawk Diaz-Perez  
Nancy Hays Heffernan  
Sonny and Marlene Hersh  
Nancy and Dale Hershfield  
David and Maria Hibbs  
Leslie Hickey  
V.E. Hicks  
Nancy and Allen Hirschfield  
Carol and Jeff Holden  
Louise A. Holland  
James D. Holzhauer  
Dr. Sujin Huggins and Ms. Jasmine Kennedy  
Ann Murray and Mike Hurtubise  
Jennifer and Brad Ilko  
Theresa Jabaley  
Judy Jackson  
R. Jaquart  
Mary Anne and Frank Jakalski  
Dr. Julie and Mr. William Jastrow  
Rolf B. Jenkins  
David Jewell  
Reena and Sajiv John  
Karen and Dan Johns  
Ms. Judith Jump  
Tom and Esta Kallen  
Olwyn J. Kane  
Gayle Kanro  
Harriet and Ernest Karmin  
Diane and Byron Karzas  
Stuart Katz and Keith Erickson  
Sherri Kayser  
Julie and Bill Kellner  
Kathleen and Terrence Kennedy  
Kishwar Khalid  
Wendy and Thomas Kilcollin

M. Barry and Diane Kirschenbaum  
Jean Klingenstein  
Mr. James Klise  
Byron and Elizabeth Knight  
Greg and Carol Korak  
Forevermore Dance & Theatre Arts  
Amy Kovalan and Edward Kerros  
Susan Kovic  
Judy and Perry Kozicki  
Rosemary Krimbel  
Mr. Arthur Kroft  
Jayna and Barry Kroll  
Jared D. Kurber  
John L. Ladle, Jr.  
Jim and Laurel Lannen  
William and Blair Lawlor  
Bryan S. Lazorik  
Laura A. Ledford  
Mary and John Lesch  
Michael and Diane Levy  
Ellen Frell Levy  
Greg Lewis and Mary Strek  
Allison Liwanag  
Mr. David P. Lloyd and Ms. Suzanne Williams  
Vicky M. Longawa  
Pamela Lowenthal  
Steven Patrick Luetger  
Paul and Miriam Lythberg  
Eileen Madden  
Dave and Nancy Madsen  
James L. and Alice Reno Malone  
Michael Maloney  
Mr. Tom Manning  
Deborah B. Manoojian  
Ben and Mary Lou Marchello  
Mary Ann and Dennis Marks  
Mathew Marquez  
Dorothy Martin  
Kathleen Martin  
Catherine Masters  
Teresa Mastin  
The Mather Family  
Ben Maxson  
Alisha and Alan McCloud  
Margaret and Mike McCoy  
Kathleen McCullough  
Tim McGonegle and Barbara Sullivan  
Dan and Mary McGuire  
Michele Elizabeth McGuire  
Maureen McIntyre  
Cathy and Mark McKee  
Pam McKinley  
Ms. Robin McKinney  
John and Karole McLaughlin  
Sara and Richard Mesirow  
Loren R. Miller III  
Patricia M. Milroy  
Art and Linda Milton  
Mr. Andrew Mines  
Judy Mischel and Jeff Horvitz

Antonia Mohs  
Ann Mokrauer and Daniel Carroll Madden  
John and Bonnie Morell  
Carly-Rae Moss  
Sheldon Mostovoy and Nola Penn  
Timothy and Janet Murtaugh  
Ms. Jane Myers  
Ingeburg Neckermann  
Carol T. Neely  
Nicolas H. Nelson  
Emily Nesler  
Jon and Kathy Newcomb  
Eleanor A. Nicholson  
Mrs. Ellen Evans Noth  
John and Pat O'Brien  
Kathleen O'Brien  
Linda O'Bryant  
Christine Oliver  
Dennis C. Oliver  
David and Mary Jo Orkowski  
James Padgett and Rosanne Fitko  
John P. Parkins  
Audrey L. Paton  
Patrice Pearsall  
Kurt J. Peight  
Cliff Perotti  
Mr. and Mrs. Daniel Perry  
Lindsey and David Peters  
Melanie and Daniel Peterson  
Bruce and Susan Peterson  
Genevieve Phelps  
Mr. and Mrs. Joe Phillips  
Marlan Popovich  
Ms. Julia Querin  
Chris and Elizabeth Quigg  
Thomas Quinn and Eileen Furey  
Francisco Quinteros and Katherine Donahoe  
James and JoAnne Rankin  
David Rebnord  
Mr. and Mrs. Richard Redmond  
Herbert Reece  
Mary Lee Reed  
Libby and Dan Reimann  
Mr. and Mrs. Myron J. Resnick  
Joan Chilton Richards  
Dr. and Mrs. Ralph W. Richter, Jr.  
Paul Rink  
Gerald Riva  
Marilynn and Charles Rivkin  
Julian Rodriguez  
Wylie and Leah Rogers  
Margot and David Rosenbaum  
Alan and Debra Rosenberg  
Warner and Judy Rosenthal  
Heidi S. Rothenberg  
Bonnie Fry Rothman and Michael Rothman

## FRIENDS \$250-\$499

Karen Abbasy  
Tom and Ann Alexander  
Armando M. Almendarez  
Yolanda and Marco Ambriz  
Robert W. Andersen and George P. Schneider  
Kimball and Karen Anderson  
Anonymous (18)  
Edward Applebaum and Eva Rede  
Jim and Mimi Ardis  
Joan and Henry Arenberg  
Harriet Arnold  
Mareon R. Arnold  
Susan Arnold  
Mr. Brent Arrison  
Keri and Phillip Bahar  
Sharon Baldwin  
Randy and Lorraine Barba  
Mr. and Mrs. William G. Barker III

Gregory Batton and Carol Constantine  
Mr. and Mrs. Thomas J. Bax  
Gerald and Maria Bayer  
Mary Beaubien  
Elizabeth S. Beck  
Ms. Gail Bedessem  
Susan and Don Belgrad  
Patti and Nebil Benaissa  
Kennette Mary Benedict  
Susan R. Benner  
Jennifer Benson and Steven Bufferd  
Phyllis and Leonard Berlin  
Bambi Berman  
Jamie L. Berndt  
John Bernstein  
Julie and Lawrence Bernstein  
John and Lorraine Biel  
Andrea Billhardt  
M.J. Black and Mr. Clancy

Bernard and Nancy Blayer  
Dr. Thomas Pritchett Bleck  
Dennis and Sharon Blevit  
David and Linda Blumberg  
Linda and Robert Bolas  
Mr. and Mrs. Don and Linda Bolte  
Rosalie and Gregory Bork  
Steve and Kris Borkenhagen  
Aldridge Bousfield  
Sam and Phyllis Bowen  
Barbara A. Boyer  
Julia Bristow Briggs  
Mr. and Mrs. David and Julie Bromley  
Linda and Terry Brown  
Tom and Mary-Doug Brown  
Richard Bruner  
Christine and Matthew Brunmeier  
Allison Brustin and Lisa Groff

Dr. Regina Buccola  
Pam and James Buchholz  
Patricia P. Buckler  
Perry and Lillian Buckley  
Marcia and Gerald Burke  
Karen and David Burnett  
James and Donna Cainkar  
Max Ethan Callahan  
Kenneth and Harriet Carlson  
Michael and Nancy Carr  
Virginia and Stephen Carr  
Christine Chakonian and John Shustitzky  
Stewart Chapman  
Ms. Cynthia Cheski and Rev. Scott Elliott  
Barbara and Bruce Chrisman  
Georgia Cibul  
Susan Coaker  
Christopher Cobb



Laura and Scott Roulston  
Herbert and Rita Rubin  
Susan B. Rubnitz  
Sherri Ruppel  
Mary Ann and Stephen  
Ruskin  
Ann and Ray Rusnak  
Robin Russo  
Ed and Diana Ruthman  
Jim and Noreen Ryan  
Susan Salay  
Perika Sampson  
Richard and Susan Sanders  
Richard Angelo Sasso  
Mary Ann and Bob Savard  
Jo and Robert Sawyer  
Rita and Marc Thompson  
Marie-Claude and Peter  
Schaer  
Heidi Schelling and  
Dana Bertogli  
Anne and Steven Scheyer  
Rosa Schloss  
Rose Schmidt  
Sandra and Jon Schmoll  
Brian and Carolyn  
Schroeder  
James T. Schulman  
Gerald Schultz  
Don and Polly Schwartz  
Susan and Charles Schwartz  
Will Schwarz and Nancy  
Grace; Sam, Anna and  
Nate Schwarz  
Dr. and Mrs. Laurence Segil  
Dennis and Janice Sejut  
Donald and Ruth Sender  
Joseph C. Senese  
Naomi and Jerry Sensor  
John Sergio  
Linda Severin

James Shaeffer and  
Lynn Hughitt  
Liz and Jeff Sharp  
Mr. William H. Sharp  
Kimberly May Shearer  
Brian and Angie Sheehan  
Lisa Montepasse and  
David Shepherd  
Hille and Christian Sheppard  
Suzanne Shoemaker  
June Hill Shulman  
Anna and Mark Siegler  
Terri Simchak  
Mr. and Mrs. John Simmons  
George and Lynne Simon  
Amrit Singh  
Mark and Alison Skertic  
Wesley Skogan and  
Barbara Puechler  
George and Susan Sladoje  
Jane and Arthur Slaven  
Mr. Matthew Smart  
Mary Ann Smith  
Liz Sode  
Tom and Janet Southall  
Mr. and Mrs. William A.  
Spence  
Uta Staley  
Mary Clare and Joseph  
Starshak  
Denise Stefan  
Kathleen Steffen and  
Steve Wirth  
Doctors Jeffrey and  
Robin Stern  
Rhonda and Gary Stern  
Virginia Stigler and  
Stephen Stigler  
Mary Stitt  
Mr. G. Ralph Strohl and  
Dr. Minalini Rao  
Judy Struck

Mary and Kenneth Sullivan  
George Patrick Surgeon  
Linda Swanson and  
John Seely  
Joyce and Christopher  
Sweet  
William and Heidi Swiss  
Elyse Pearlman and  
Brad Teckenbrock  
The Tello Family  
Roberta and Leonard  
Tenner  
Joseph and Dahlia Teshner  
Barbara and Randy Thomas  
Sue and James Thompson  
Karen Tiersky  
Carl and Karen Tisone  
Alex Hesemann and  
Angela M. Tomazin  
F. Joseph Tomecek  
Elizabeth and Robert  
Tompkin  
Richard Traut  
Marci A. Eisenstein and  
John W. Treece  
Coleman and Deborah  
Tuggle  
Ms. Rebecca Tung  
Rheal P. and Denise Turcotte  
Mary Kay Tuzi  
Jane and Howard Tyner  
Karen Van Duyn  
Megan van Vlierbergen  
Malika Viltz-Emerson  
Mr. and Mrs. James Vlaming  
Carol and James Vondale  
Tryna Wade  
Christopher Walker  
Rev. Mark J. Walter  
Kevin and Anne Warnke  
Barry Watkins  
John Watts and Beth Lewis

Mr. David Weible  
Jim and Mary Weidner  
Dr. Carol Weinberg and  
Mr. Harold J. Winston  
Patricia and Michael B.  
Weinstein  
Dr. Barry Goldman and  
Victoria Weisenberg  
Danny and Mitch Weston  
Mrs. Henry P. Wheeler  
Richard Wheeler  
Judith and Floyd Whellan  
Mary and Ronald Whitaker  
Charles A. and Jeanette  
White  
Barbara Whitman  
Don and Alison Wilbon  
Graham and Suzanne Wills  
Jeffrey Wilt  
Debra Winer  
Ann Wise  
Mr. Leonard Wojtecki  
Cathleen Wolfe  
Mr. and Mrs. Stephen Wolfe  
Cindy Wolfson  
Diane P. Wood  
Diane and Ted Woolever  
David and Elizabeth Wright  
Nancy Wulfers  
Philip and Virginia Yarrow  
Linda Youngman  
Jamie and Richard Zelvin  
Janice Ziebkla  
John and Linda Zimnie  
Charles and Gail Zugerman  
Mr. and Mrs. Edward J.  
Zulkey  
David Zwarycz

Gerry and Carol Chrisman  
Drs. Christopher and Karen  
Chroniak  
Charles and Mary Chuman  
Claeys Family  
Mary Ellen Clancy  
Jim and Bridget Coffing  
Clarice J. Cogen  
John and Mary Collins  
Diarmuid Collins  
Peter and Judy Connolly  
Sharon Conway  
Katherine Coyner  
Barry Gershinzon and  
Karin Crane  
Timothy Crawford  
Mary and John Crois  
Rosemary Crowley  
Alan and Charlotte  
Cubbage  
Nicholas Hittner-  
Cunningham  
Joan Curto  
Sue and Kent Davis  
Patrick Daw  
David A. DeBoer  
Leo Lynn Deely  
James and Natalie DeRose  
Paula J. Dillon  
Robert A. Doepp  
Dr. and Mrs. Henry  
Dold, M.D.  
Debra and Jim Donahugh  
Keith and Chris Donaldson  
Janet Donne  
Sue Donoghue  
Mrs. Elizabeth Gwynn  
Doolin  
Ms. Bernice Dorig  
Tom Doyle  
Margaret Driscoll  
Timothy Duggan  
The Duhan Family  
Leslie J. Dummitt and  
Eric C. Schmidt  
William Dumont  
Dr. Isard Dunietz  
Mr. Kenneth East and  
Mr. Timothy Thurlow  
Robert Edger, M.D.  
W. Dow Edgerton  
Heather Edmands  
Chris and Larry Eggan  
The Eidle Family  
Jacquette Ellinger  
Deane Ellis  
Barry K. Elmore  
Melanie Emerson  
Manchershaw Engineer  
Mr. and Mrs. Ethan Erenberg  
John and Mary Erhard  
Deborah M. Evans  
Mr. and Mrs. Alan and  
Nancy Evans  
Fran Fallier  
Marilynne Felderman  
Roger Philip Feldman  
Judith and Clifton Fenton  
Pauline Fife

Laura Fishman  
Richard and Kathleen  
Flanagan  
Beth Follenweider  
Maynard K. Fossum  
Irene and Jay Frank  
Joseph Frank and  
Betsy Solaro  
Laurel and Zach Frankel  
Mary J. Franklin  
Rhona and Julian Frazin  
John Freidheim  
Kiran Frey and Pradip Sethi  
John and Joanne Gallagher  
Donn and Barbara Gardner  
Samuel Garloff  
Raymond and Patricia Gass  
Cara Mia Gaziano  
Darlene Gee  
Miles George Notre Dame  
College Prep  
Trish Gerber  
Sharon A. Giles  
Robyn Gilliom and  
Richard Friedman  
Dr. and Mrs. Richard Glinka  
Jim Goeser  
Andrea Goldberg  
Natalie Goldberg  
Steve and Linda Goranson  
Michelle and Gerald Gordon  
Michael and Amy Gordon  
Virginia Grapey  
Mr. Joel and Dr. Sharon  
Greenburg  
Constance Greene  
Michael Grethen  
Catherine Griffin  
Marilyn Grogan  
Merle K. and Barry Gross  
Dan Groth  
Paul M. Gruber  
Dana M. Grzenia  
David and Sheila Haas  
Drs. David and Elaine  
Hacker  
Cohen and Hacker  
Architects, LLC  
Susan Haimes  
Martin and Karen Halacy  
Robert and Melanie  
Halvorson  
Steven Harris  
Thomas P. Haslett  
Dr. Marise Hass and  
Dr. Scott Hite  
James and Sylvia Heim  
Maryjoy and David  
Heineman  
Robert Helligeth  
Sean E. and Dana J.  
Hendren  
James and Mary Jo  
Henegan  
Sharon L. Herendeen  
Judy and Jay Heyman  
Lina Flores Hilko  
Robert Hill and Thea Flaum  
John B. Hirsch

Harold Hirsch  
Aaron and Sarah Hoffman  
Brendt and Miho Holden  
Kevin M. Hollenbeck  
Thomas C. and Louise P.  
Homburger  
James W. Hoover  
Susan K. Horn and  
Donald S. Honchell  
Kay and John Hosmer  
Timothy F. Hyland  
David and Karen Hyman  
Dr. Carol Ivy  
Karen Jared  
Jeffrey Jens  
Jim and Jackie Jepsen  
Ruth and Michael Jewell  
Jerry and Karen Johnson  
Laurie and Mark Jolicoeur  
Cheryl Jolineau  
Kimberlee Jones  
Mrs. Ethel R. Kaplan  
Mike and Jane Kathman  
Dennis and Marcie Kelley  
The Kelly's  
Marie Ruff and  
Bill Kenneally  
Katherine and Kevin  
Kenward  
Susan Kern, M.D.  
Louis V. Kersten  
Algimantas Kezelis  
Maria Khrakovsky  
Rahshonda Kirkwood  
Terry and Jack Klecka  
Matt and Karen Klickman  
Deanne Kludy  
The Kohatsu-Witkowski  
Family  
Mark R. Kornegay  
Shari Kouba  
Lottie Kowalski  
Mark Kozicz  
Theodore Krakowski  
Bonnie Krasny  
Fran Kravitz  
Richard Landgraff and  
Bernadette Foley  
Eileen Landau  
Pete Friedmann and  
Karen Laner  
Left Brain Wealth  
Management  
Richard F. Lanier  
Virginia Noerr and  
Leonard LaPasso  
Charles Laurito  
Kent and Kathy Lawrence  
Scott and Bobbi Lebin  
Rosalind Lee  
Deborah Leff  
Ken and Marge Lemmel  
Phyllis Lerman  
Susan Levitt  
Fran and Chuck Licht  
Constance Lilly  
David and Carol Liner  
Margaret and Derek Linkous  
Melvin Loeb

Rick Loria  
Sam and Joan Lovering  
Mr. and Mrs. Lowum  
Dr. Rosemary Lucas  
John Lucey  
Roseanne Lucianek  
Wayne and Kristine Lueders  
Michelle Luna  
Deborah Lust  
Mark P. Lutze and Hilda  
Demuth-Lutze  
Brad Lyerla and  
Donna Morgan  
Veronica Lynch  
James Madden  
James Mann  
Delores Mannes  
Sharon Manuel  
The Maratea Family  
Elaine Margulis  
David Marker and  
Georgeann Joseph  
Barbara Martin  
Anne S. Martin  
Glenda Mason  
Philip and Ann May  
Nicolette Mayo  
Joseph Paul McGrath  
Honorable Kathleen M.  
McGury  
Rodrick and Yoshie  
McIlquham  
George and Alice McKann  
James D. McQuillan  
Terry McWhorter  
Mary and Steven Mecker  
David J. Medow  
Helen R. Mehler  
Claretta Meier  
Christopher Melby  
Truman and Dorothy Metzel  
Jerrold and Marian Michaels  
Henry A. Miller  
James A. Miller  
Diane Mocerf  
Martin and Lauren Modahl  
Melinda Moore  
Kim Morgan  
Karen and Larry Morgan  
June Deforest Morganstern  
Todd and Linda Morning  
John A. Morrison  
George Morrissey  
Dr. and Mrs. Mark D.  
Mrozinski  
Elizabeth Muchow  
Arthur J. Murphy  
Mr. and Mrs. Joseph Murphy  
Mary Ellen Murphy  
Angela Murray  
Ms. Barbara A. Murtha  
Natalie Mycyk  
Dr. Raja R. Nadimpalli  
Erica Nadler  
Thomas Nazimek  
Leslie and William Nelson  
Nhan Nguyen  
Scott and Brenda Nickel  
Zehava L. Noah

## ASSOCIATES \$150-\$249

Annie and Jacques  
Abramowicz  
Ian Ackerman  
Lynn Chamberlain Adams  
Mark Aghakhan  
Marjorie Albrecht  
Mary and Terry Anderson  
Anonymous (25)  
Steven M. Antholt  
Mr. Steve Armstrong  
The Southwest Symphony  
Orchestra  
Jill and Erik Attkisson  
Cal and Ann Audrain  
Adie and Dick Baach  
Bill and Janet Backs  
Annette Baldwin and  
Paul Kolasinski  
Peter T. Bandelow  
Jane and Norman Lee  
Bannor  
Meredith A. Banta and  
Leo Aubel  
Barbara J. Barnes

Peter Barrett  
Don and Jan Barshis  
Mary and Alex Bart  
Stephanie and John Bartels  
Sheila Barton Bosron  
Andrea Bauer  
Elaine and Howard Bayer  
Steve and Anne Beatty  
Robert and Pamela Becker  
Dr. David Powell and  
Kathleen Behner  
Kathleen M. Bell  
Jason Benetti  
Lee and Kathryn Benish  
Katherine Bergson  
Roy C. Bergstrom  
Tom Beris  
Sarah Bermingham  
Mr. Gordon Berry  
Robert Best  
Rich Beymer  
Noel and Shirley Biery  
Gemma and Derrick Billings  
Anne Bilos

Rick and Kaila Bingen  
H. Michael Biscan  
Nancy and David Bishop  
Ms. Georgia Blalock  
John Blane  
Merrill and Judy Blau  
Sandra Blau  
Bob and Jane Grogan  
Mr. Dieter Bloecks  
David L. Bloom  
Hendrix and Kim Bodden  
Joan Bodendorfer  
Darci Bolenbaugh  
Rosemary Ann Bonacci  
James Bondi and  
Judith Vargas  
Sharalyn Borchers  
Robert and Susan Bowker  
Joann and Bill Braman  
Marjorie Bransfield  
BJ Braun  
Michael Brazier  
Barbara Brenke

Adrienne and Arnold  
Brookstone  
Larry and Susanne  
Broutman  
Conni J. Brown  
Barry Bruckner  
Debra Bucek  
Howard and Moira Buhse  
Mr. Jack Buoscio  
William and Helen Burns  
Ann Burnstine  
Rosemary and John Buteau  
Mary E. Callow  
Jacqueline Cambata  
Amy and Jeff Cardella  
Helen Carlock  
Drs. Michele Carlson and  
Juan Herena  
The Carso Family  
Constance K. Casey  
Jess Michael Casner  
James Cavanaugh  
Rowland Chang  
Judy M. Chernick

Jerry and Geraldine Nolen  
 Mary Alma Noonan  
 Dr. Angela Normoyle  
 Henry and Debra  
 Novoselsky  
 Elizabeth O'Connell  
 Carol and Stuart Oken  
 Candus S. Olson  
 Ute and Reed O'Malley  
 Neal and Mary Clark  
 Ormond  
 Florence Upjohn Orosz  
 and Joel J. Orosz  
 David Orr and Kim Bobo  
 Tiff and Abe Oshel  
 Lynne Ostfeld  
 Douglas and Suzanne  
 Overbeck  
 Jay Owens and  
 Penny Applegate  
 Lyn and Joe Page  
 Kristi Pagoulatos  
 Susie Paoni  
 Roger and Martha Pascal  
 Nancy Patterson  
 Midge Perlman Shafon  
 Elizabeth Anne Peters  
 Nadine Petersen  
 Rita Petretti  
 Ed and Diane Pieklo  
 Thomas J. Pierce  
 Dr. Robert B. Pildes  
 Cathy A. Pilkington  
 Jan Linn and Richard  
 Pincus  
 Zachary and Amanda  
 Piper  
 Dr. and Mrs. Donald  
 Pochly  
 Katherine Gray Pollock  
 Ponce de Leon Family  
 V. Pristera, Jr.  
 Jerry Proffit  
 Marcia Purze  
 Dorothy Victoria Ramm  
 Debra J. Randall

Barbara Randolph  
 Adele Rapport  
 Pradeep and Taposhree  
 Rattan  
 Gary and Susan Redeker  
 The Riedl Family  
 Mr. and Mrs. Norman A.  
 Robins  
 Joan V. Roeder  
 Earl and Christiane  
 Ronneberg  
 Bernie and Judy  
 Rosenstein  
 Susan Rosenstein  
 Executive Search  
 Limited  
 John W. Roth  
 Susan L. Sack  
 Joan and Frank Safford  
 Jonathan and Michelle  
 Sales  
 Les and Joanne Sandlow  
 Carmella Saraceno and  
 Roger Machin  
 Joyce Saricks  
 David and Nancy Sarne  
 and Family  
 John Sarwark  
 Alfred and Linda Saucedo  
 Kathleen Schlegel  
 Marcia Schneider  
 Howard and Lynn  
 Schnepfer  
 Gene and Faith Schoon  
 Margaret and Eric  
 Schuering  
 Dianne and John B.  
 Schwartz  
 Daniel J. Schwich and  
 Kathie Bender Schwich  
 Todd and Susan Semla  
 The Shalak Family  
 Karen B. Shank and  
 Toby Lange  
 Jane Shapiro

Myron and Beverly  
 Shapiro  
 Peggy Shapiro  
 William Shaver and  
 Mary Jo Strusz  
 Mr. and Mrs. Allen  
 Shoenberger  
 Graciela and William  
 Shorey  
 Bill and Harlan Shropshire  
 Ellen and Richard Shubart  
 Mr. Sanjaya Shunglu  
 Bruce and Sarane  
 Siewerth  
 Lisa Skemp  
 Ms. Elizabeth Sklarsky  
 Dr. Jeffrey Slovak  
 Geralyn Stanczak Smith  
 Madison R. and Carolyn  
 J. Smith  
 Marge and Larry Sondler  
 Ivette Sosias  
 Rocco Spallone  
 Dr. and Mrs. Marshall  
 Sparberg  
 Joseph Spellman  
 Gerald and Mary  
 Stapleton  
 Ms. Joyce Steffell  
 Joel Stein  
 Neil Stern  
 Jo Ann Stevenson  
 Doug and Betsy Stiles  
 John Stock  
 Laura Sudler  
 Chuck and Judy Swisher  
 Ronald Tevonian  
 Cheryl Thaxton  
 Paul and Linda  
 Thistlethwaite  
 Ken and Glenna  
 Thompson  
 Joan and Kenneth  
 Thompson  
 Karen and Steve Timian  
 Richard C. Treadway

Sally L. Trekell  
 Celeste Troon  
 Hsi-Tsin Tsiang  
 Amanda and Gregory  
 Valyer  
 Julia and Ben Van Vliet  
 Ronald and Catherine  
 Vaughn  
 Ronald and Barbara  
 Vavrinek  
 Margaret Veach  
 Linda Vertrees  
 Jim and Susan Wade  
 Albert and Arlene Wagner  
 Kamiah Walker  
 David and Anna Mary  
 Wallace  
 Mr. and Mrs. John Wallace  
 Ed Walsh  
 Sherwyn and Irvina  
 Warren  
 Ms. Amy Waters  
 Scott Wechsler  
 Cynthia Weglarz  
 Victor and Tamar  
 Weissberg  
 Patricia Wess  
 James N. Wicklund  
 Lisa Wiersma  
 Herbert and Catherine  
 Wigder  
 Jessica and Cristine  
 Williams  
 Kyla Wilson  
 Patrick and Patrice  
 Wooldridge  
 Bruce W. Worthel and  
 Barbara G. Young  
 Ruth N. Wukasch  
 Julie Yamaguchi  
 Jiaming You  
 Joan and Russ Zajtchuk  
 David Zarefsky  
 Mr. and Mrs. Laurence W.  
 Zoeller  
 Michael J. Zolik

# Tribute Program

An honor or memorial gift is a distinctive way to honor the memory of friends and family or pay tribute to milestone celebrations. For more information regarding this program, please contact Brooke Flanagan in the Advancement Office at 312.595.5581 or bflanagan@chicagoshakes.com.

*Reflects gifts received between April 15, 2018–April 15, 2019*

## MEMORIAL GIFTS

FOR SARAJANE AVIDON  
 AND FELIX SHUMAN  
*Dick Simpson*

FOR MY MOTHER  
 C. EVELYN DAVIS  
*Celeste H. Davis*

FOR LOIS DUNN  
*Kathy Dunn*

FOR JACK FULLER  
*Debra Moskovits*

FOR ANN HERNDON  
*Dr. John A. Herndon*

FOR DODIE KOHL  
*Susan Salay*

FOR KENNETH KUEHNLE  
*Andrea Atlass*

FOR ABBY S. MAGDOVITZ-  
 WASSERMAN  
*David Wasserman, M.D.*

FOR DR. JAMES L. RAPPORT  
*Adele Rapport*

FOR BERNARD "BERNIE"  
 SAHLINS  
*Tobi and Milton Lefton*

## HONORARY GIFTS

FOR RICK BOYNTON  
*Bobbi Zabel*

FOR TOM AND CAIRY BROWN  
*Lisa Gates*

FOR TOM BROWN  
*Karen Campbell*

FOR HARVE A. FERRILL  
*William and Anne Goldstein*

FOR E. BROOKE FLANAGAN  
*Bill Melamed and Jamey Lundblad*  
*Claire Rice*  
*Bobbi Zabel*

FOR BARBARA GAINES  
*Madonna and John Merritt*  
*Bill Melamed and Jamey Lundblad*  
*Mr. and Mrs. Norman A. Robins*

FOR GARY AND  
 VIRGINIA GERST  
*Rhona and Julian Frazin*

FOR MARILYN HALPERIN  
*La and Philip Engel*  
*Naja Maltezos*  
*Kathleen and Thomas Masters*

FOR HILL AND CHERYL  
 HAMMOCK'S 50TH  
*Dorne and Stephen Eastwood*

FOR JASON HARRINGTON  
*Paul Rink*

FOR CRISS HENDERSON  
*Bill Melamed and Jamey Lundblad*

FOR CRISS HENDERSON AND  
 RICK BOYNTON  
*Herbert Boynton*

FOR JAN AND BILL JENTES  
*Karen and Tom Howell*

FOR BETSY KARP  
*Judy and Abel Friedman*

FOR HANNAH KENNEDY  
*Anthony Vasquez*

FOR MARK OUWELEEN  
*Mark Levine and Andrea Kott*

FOR PEMBE AND TUNCH  
*Ozyurt Family*

FOR RICHARD PORTER  
*R. Scott and Kimberly Falk*

FOR ROB RYAN  
*Mr. and Mrs. Patrick G. Ryan*

FOR ST. CRISPIN DAY SOCIETY  
*Dan Groth*

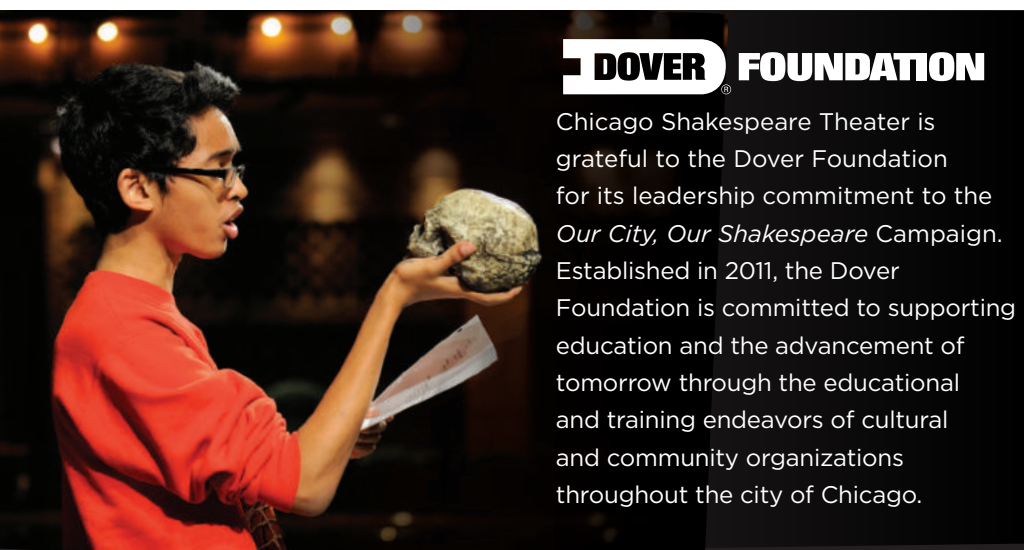
FOR HARVEY AND  
 MARY STRUTHERS  
*Thomas R. Howell*

FOR CARL AND  
 MARILYNN THOMA  
*Terrell and Jill Isselhard*  
*Joan Golder*

FOR BECKY TRAISMAN  
*Bonnie Krasny*

## DOVER FOUNDATION

Chicago Shakespeare Theater is grateful to the Dover Foundation for its leadership commitment to the *Our City, Our Shakespeare* Campaign. Established in 2011, the Dover Foundation is committed to supporting education and the advancement of tomorrow through the educational and training endeavors of cultural and community organizations throughout the city of Chicago.





# THE first folio SOCIETY

Members of the First Folio Society have generously included Chicago Shakespeare Theater in their estate plans. Chicago Shakespeare honors their thoughtful commitment to our future.

Anonymous (2)	Ray and Judy McCaskey
Mary and Nick Babson	Jonathan F. Orser
John W. Barriger	Sheila Penrose and Ernie Mahaffey
Joan Israel Berger	Barbara Petersen
Marilyn Darnall	Chuck Simanek and Edna Burke
Kathy Dunn	Craig Sirles
La and Philip Engel	Michael and Sharon Sloan
Michael Goldberger	Steve and Robin Solomon
Linda D. and Craig C. Grannon	David and Ingrid Stallé
Dick Hurckes	Susan Tennant
Barbara Joabson	Helen and Richard Thomas
Dr. Anne McCreary Juhasz	Gayle and Glenn R. Tilles
Judy and John Keller	Linda Vertrees
Mr. and Mrs. Martin J. Koldyke	Wilmont "Vic" Vickrey, Founding Principal, VOA Architects
Anstiss Hammond Krueck	Stuart and Diana Widman
Anne E. Kutak	Frank T. Wheby

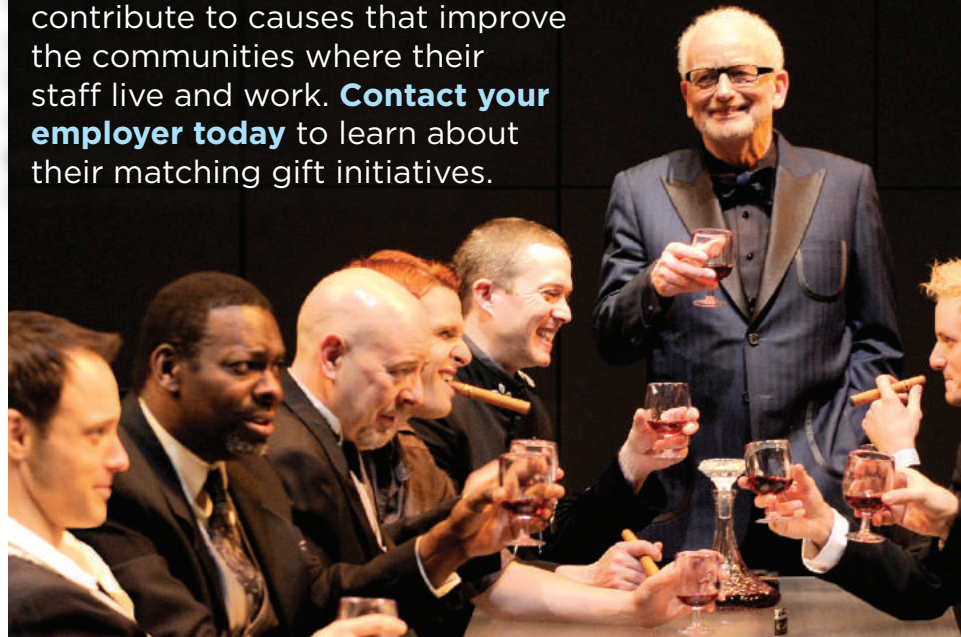
Chicago Shakespeare gratefully acknowledges the following estates that have provided gifts of bequests.

Evelyn D. Barriger	Edith B. Gaines
George W. Blossom III	Julie and Parker Hall
Carol Irma Chapman	Corinne E. Johnson
Nelson D. Cornelius	Harold H. Plaut
S.M. Evans	Rose, L. Shure and Sidney N. Shure

To include Chicago Shakespeare in your estate plans, please contact Brooke Flanagan at 312.595.5581 or [bflanagan@chicagoshakes.com](mailto:bflanagan@chicagoshakes.com)

# YOUR GIFT + YOUR EMPLOYER'S MATCH = GREATER IMPACT

Many organizations actively contribute to causes that improve the communities where their staff live and work. **Contact your employer today** to learn about their matching gift initiatives.



Questions? Contact Grace Schneck at 312.667.4947 or [gschneck@chicagoshakes.com](mailto:gschneck@chicagoshakes.com)

## Contributed Materials

Contributed materials and services are an essential component in sustaining Chicago Shakespeare's role as a gathering place for audiences, artists, and members of the community. We thank the following individuals and organizations for their valuable donations of goods and services.

*Reflects contributions received between July 1, 2017-April 11, 2019*

Ambiente Chicago  
Arc Worldwide  
BBJ Linen  
Bukiety Floral Design  
Chicago Public Media  
Chicago Sun-Times  
Communications Direct  
DMK Restaurants  
Embassy Suites Chicago  
Downtown Magnificent  
Mile and DoubleTree  
Magnificent Mile

Food For Thought  
Hall's Rental Service  
Rich Hein  
Harry Caray's  
Heritage Wine Cellars, Ltd.  
HMS Media, Inc.  
Inspired Catering and Events  
by Karen and Gina Stefani  
Intersection  
KPMG Family for Literacy  
Make It Better Media

Make-up Provided By M•A•C  
MDR Creative  
Motorola Solutions  
Pollen  
Shure Incorporated  
St. Jane Chicago  
Tiny Tavern  
Van Duzer Vineyards -  
Carl and Marilyn Thoma  
WTTW, WFMT

We are humbled by the civic and corporate leaders of Chicago and their belief in what an investment in Chicago Shakespeare can do for the future of this city.

## *Our City, Our Shakespeare Campaign Contributors*

**\$15,000,000**

Navy Pier

**\$5,000,000+**

The Davee Foundation,  
in memory of Ruth D. and Ken M. Davee

**\$3,000,000+**

Carl and Marilyn Thoma

**\$2,000,000+**

Pritzker Foundation  
Patrick G. and Shirley W. Ryan Foundation

**\$1,500,000 +**

Jentes Family Foundation  
Malott Family Foundation  
Burton X. and Sheli Z. Rosenberg

**\$1,000,000+**

Best Portion Foundation  
Susan E. and Duane L. Burnham  
Doris Conant, in memory of Howard Conant, Sr.  
The Crown Family  
Dover Foundation  
Virginia and Gary Gerst  
Anna and Robert Livingston  
Ray and Judy McCaskey  
The Robert R. McCormick Foundation  
John W. and Jeanne M. Rowe  
Donna Van Eekeren Foundation

**\$500,000+**

Joyce and Bruce Chelberg  
Chicago Music Theatre  
Exelon Corporation  
Sonja and Conrad Fischer  
Barbara and Richard Franke  
Julius Frankel Foundation  
James P. and Brenda S. Grusecki  
Family Foundation  
The Grover Hermann Foundation  
Lindy and Mike Keiser  
Judy and John Keller  
Robert and Annabel Moore  
Peter and Alicia Pond  
The Segal Family Foundation

**\$250,000+**

Mary and Nick Babson  
Julie and Roger Baskes  
BlueCross BlueShield of Illinois  
BMO Harris Bank  
Bulley & Andrews  
Mary and Paul Finnegan  
Richard and Alice Godfrey  
Ethel and Bill Gofen  
Mr. and Mrs. Richard W. Hurckes  
Kirkland & Ellis LLP  
Mr. and Mrs. Martin J. Koldyke  
Anstiss and Ronald Krueck  
Mazza Foundation  
Linda and Dennis Myers  
Nayar Family Foundation  
Northern Trust  
Sheila Penrose and  
Ernie Mahaffey  
Barbara Petersen  
Richard W. Porter and  
Lydia S. Marti  
Glenn and Danielle Richter  
Rose L. Shure and  
Sidney N. Shure  
Harvey and Mary Struthers  
Pam and Doug Walter

**\$100,000+**

Ada and Whitney Addington  
The Brodsky Family  
Joyce Chelberg  
Brian and Yasmina Duwe  
Jeanne Ettelson  
Joan and Kevin Evanich  
Hill and Cheryl Hammock  
David Hiller  
ITW  
JLL  
The Family of Jack Karp  
Chase and Mark Levey  
Jim and Kay Mabie  
Lew and Susan Manilow  
Bob and Becky McLennan  
Gerald and Marcia Nowak  
Mark Ouweleen and  
Sarah Harding  
John and Colette Rau  
The Steans Family  
Gayle and Glenn R. Tilles  
Bill and Char Tomazin  
The Wesselink Family Foundation

**\$50,000+**

Anonymous  
Barnard-Fain Foundation  
Mr. and Mrs. Brit J. Bartter  
Thomas L. and Cairi S. Brown  
Harve A. Ferrill  
Corey and Elizabeth Fox  
Pete and Beth Goodhart  
Joan M. Hall  
Linda and Jeffrey Hammes  
Kathryn Hayley and  
Mark Ketelsen  
Heestand Foundation  
Mr. and Mrs. Richard A. Kent  
David and Sandra Kollmorgen  
Barbara Molotsky  
Sylvia Neil and Dan Fischel  
Nuveen Investments  
Dennis Olis  
The Peto Family  
Merle Reskin  
Anne and Stuart Scott  
Dick Simpson,  
in memory of Sarajane Avidon  
Steve and Robin Solomon  
Matthew E. Steinmetz  
Eric Q. Strickland  
Sheila G. Talton

**\$25,000+**

Anonymous  
Mr. and Mrs. Gilberto Arias, Jr.  
Frank and Kathy Ballantine  
In honor of Rick Boynton  
Paul and Sue Brenner  
Penny Brown and Jeff Rappin  
John and Kathleen Buck  
Kent and Liz Dauten  
La and Philip Engel  
The Field Foundation of Illinois  
Barbara Gaines  
Jill and David Greer  
In honor of Gary Griffin  
In honor of Marilyn J. Halperin  
Criss Henderson and  
Rick Boynton  
Kimberlee S. Herold  
Stewart Hudnut and Vivian Leith  
Leland E. Hutchinson and  
Jean E. Perkins  
Greg and Carol Josefowicz  
Judith Loseff  
Larry and Mary Mages  
Naja Maltezos  
Judy and John McCarter  
Christopher and Erin O'Brien  
and Family  
PBJET Investments LP  
Mr. and Mrs. James W. Pierpont  
Paulita Pike and Zulfiqar Bokhari  
Nazneen and Sal Razi  
Ingrid and Stanley Razny  
Patricia and David Schulte  
Charlotte Stepan Shea  
Robin and Tim Sheehan  
Kathleen and Brian Spear  
Bill and Orli Staley  
Anne Van Wart and  
Michael Keable  
In honor of Greg Vinkler  
Ray and Donna Whitacre  
In honor of Larry Yando  
Elizabeth Yntema and  
Mark Ferguson





Inspirational.  
Performance.

*Through it all.*

With over 80 years of experience,  
Blue Cross and Blue Shield of Illinois is  
well-rehearsed in making sure you have  
confidence... no matter the stage.

*You know*  
**WHAT to BRING**



BlueCross BlueShield  
of Illinois