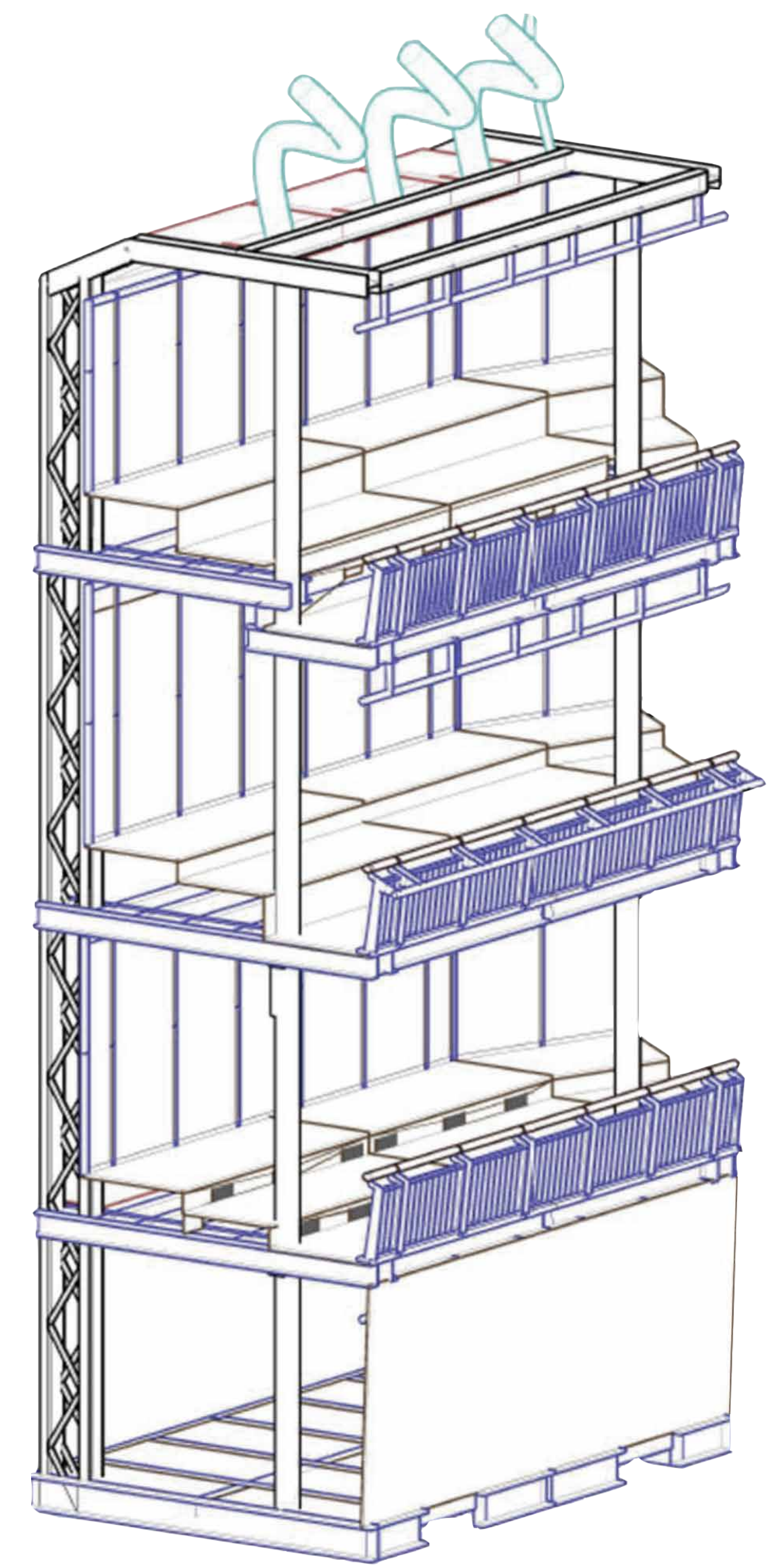
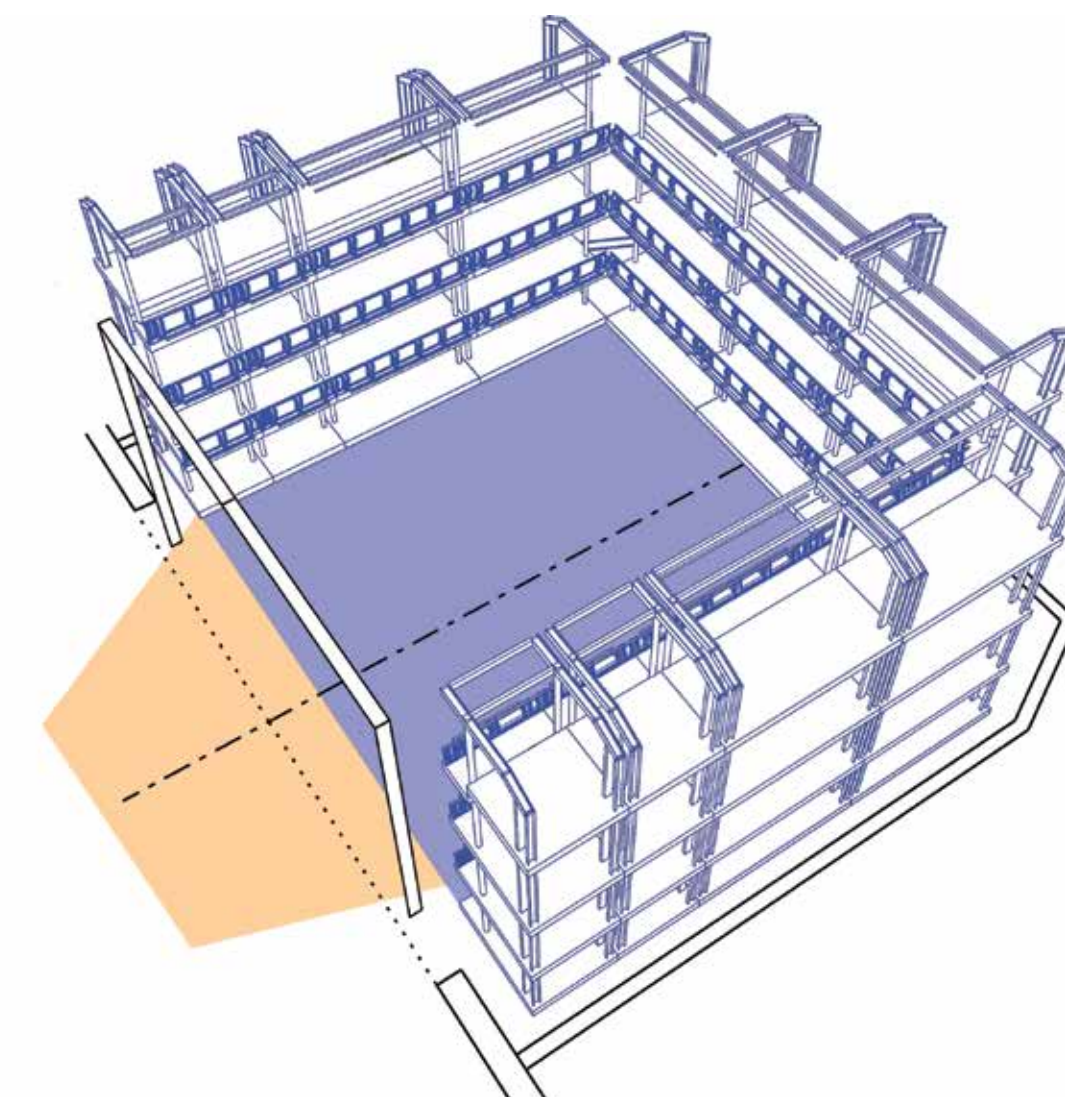
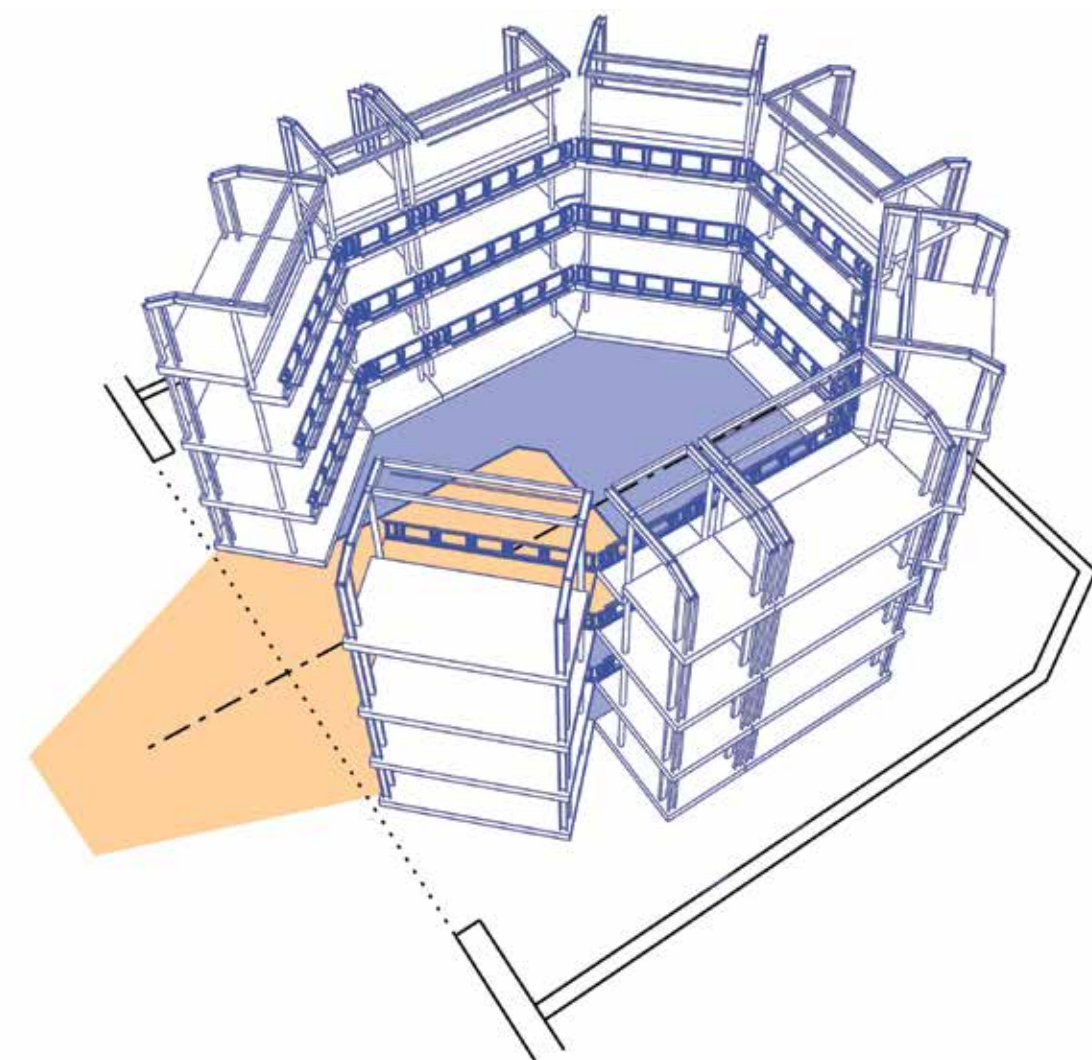
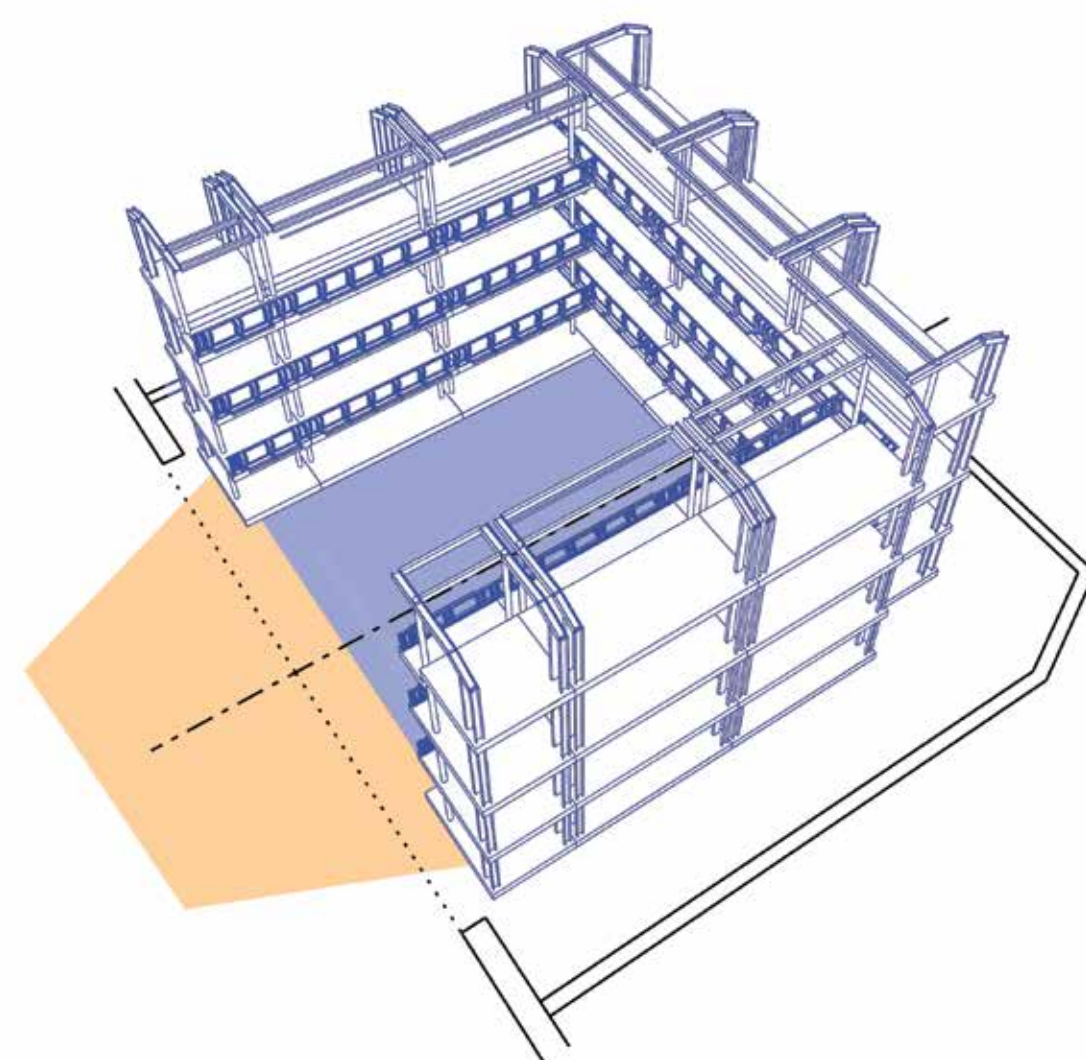
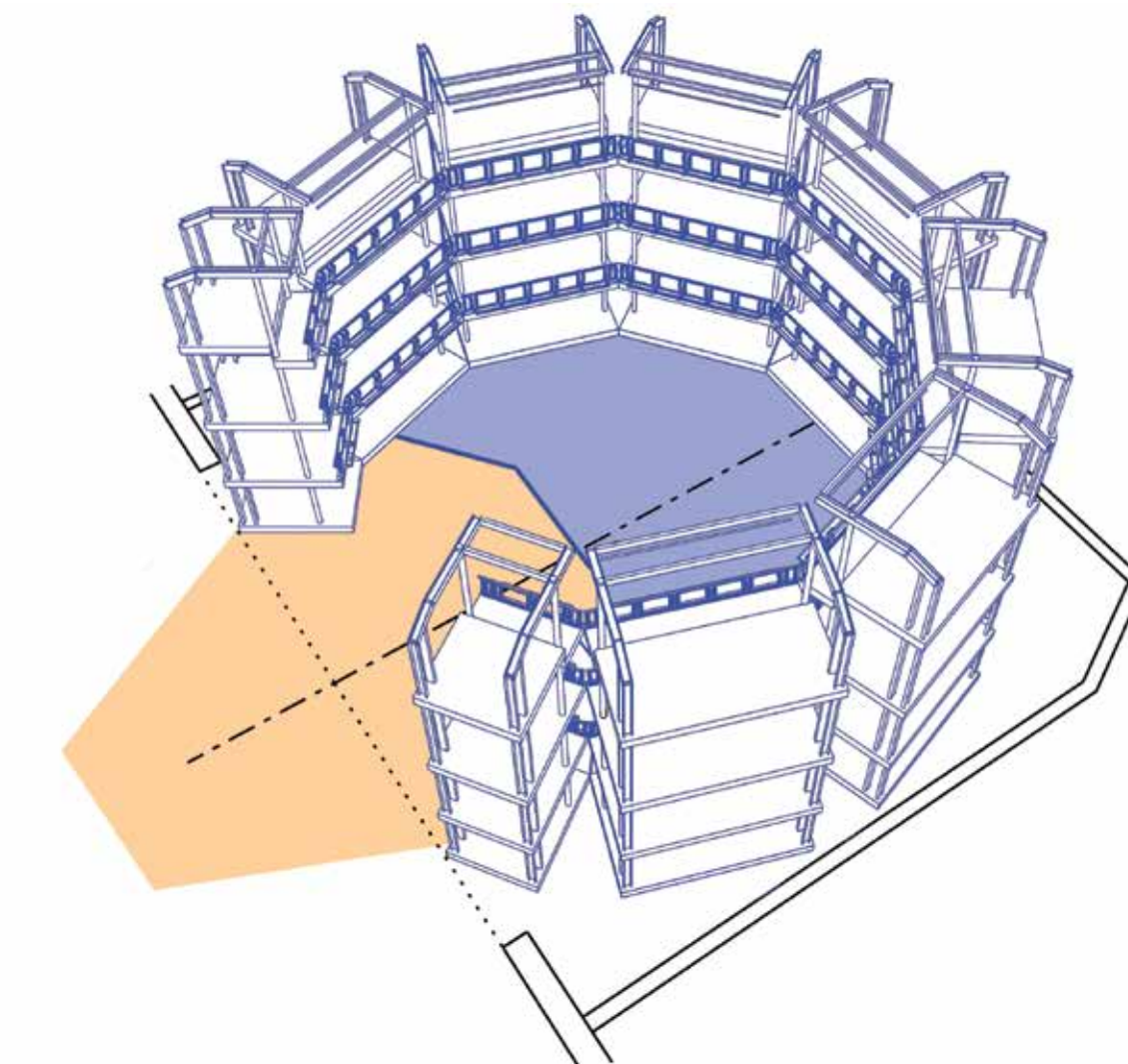
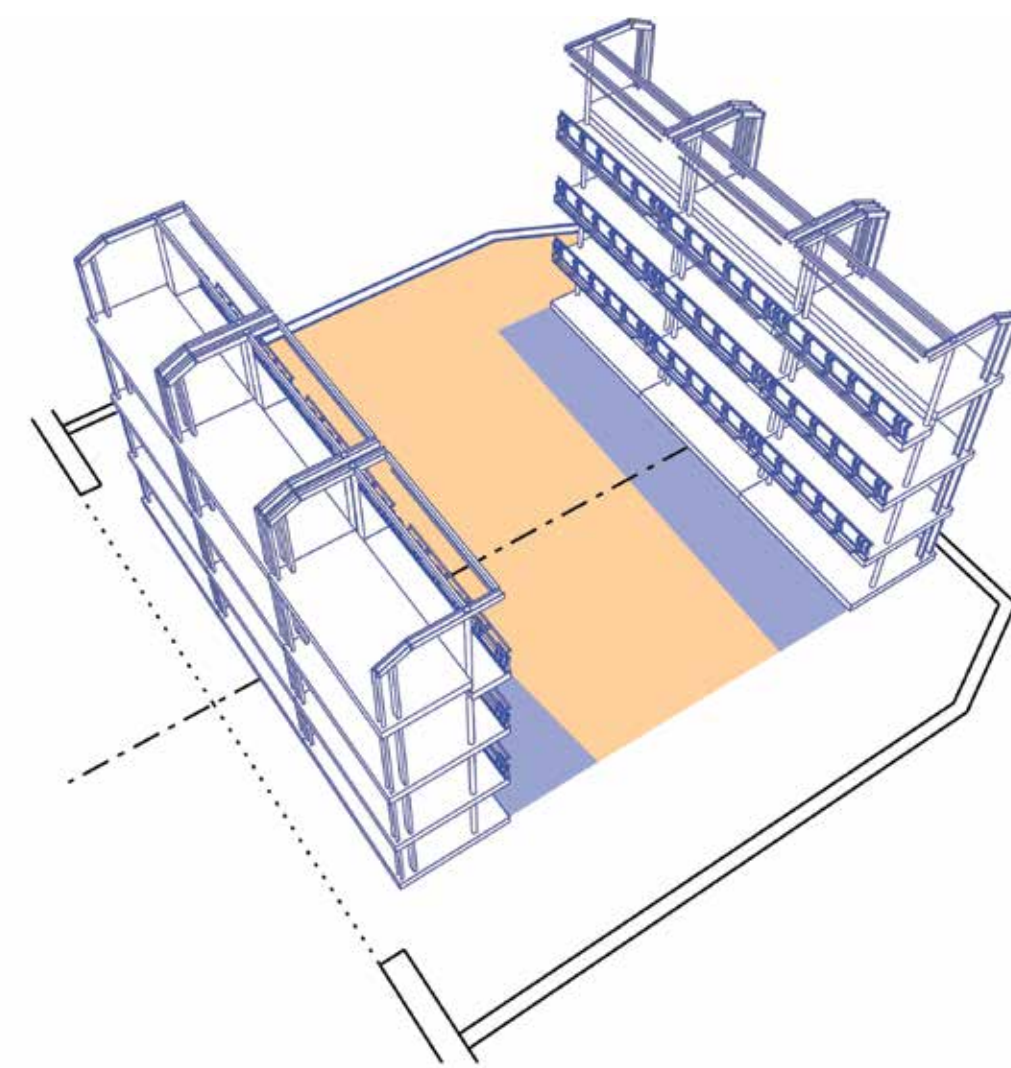
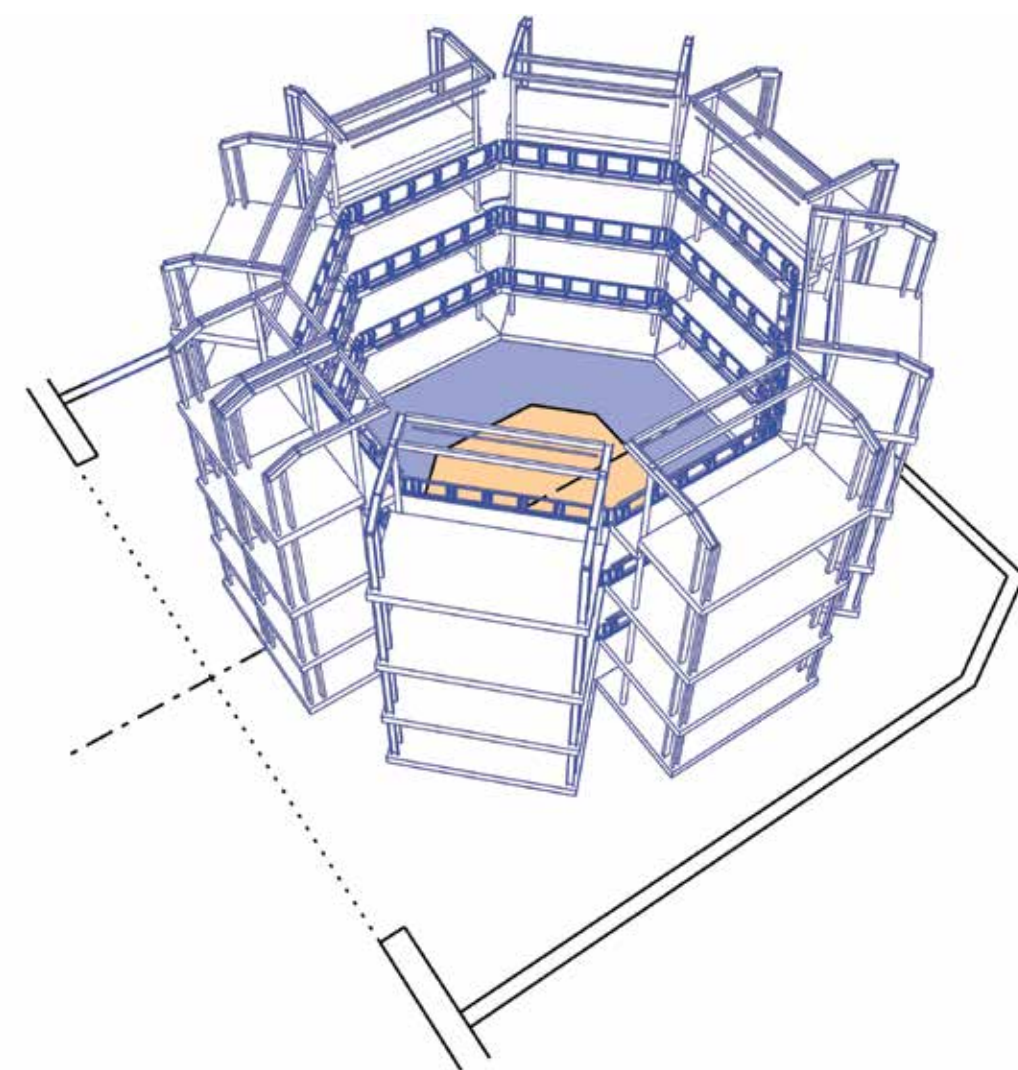
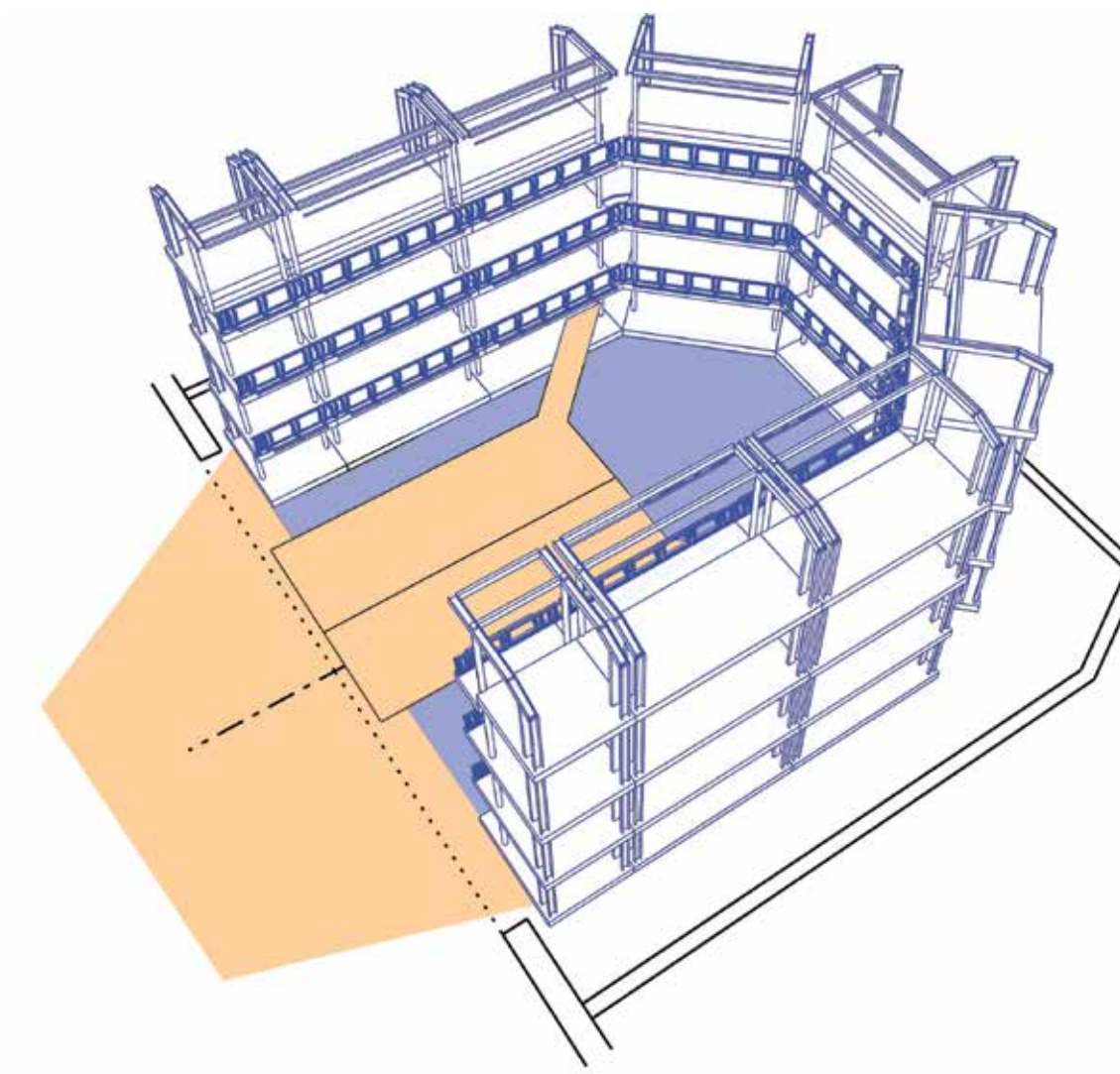
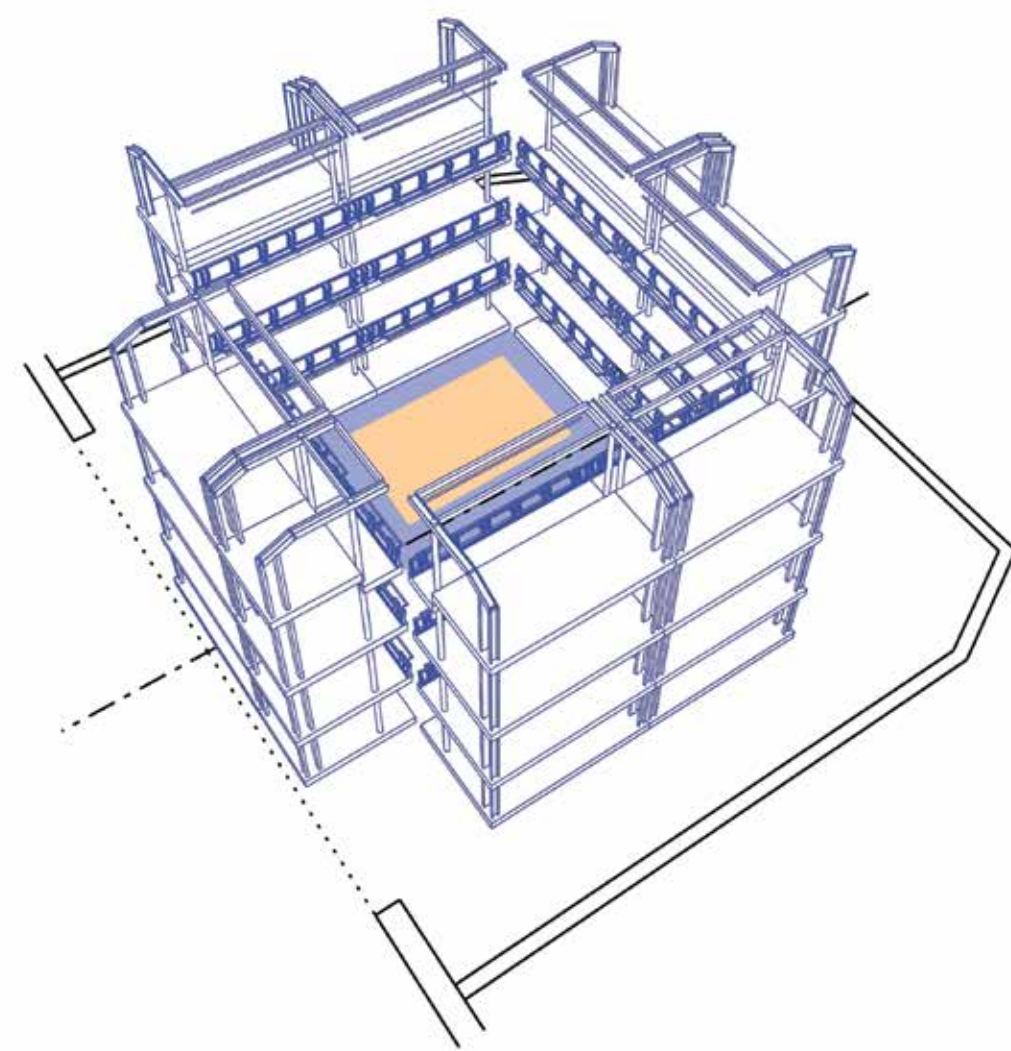
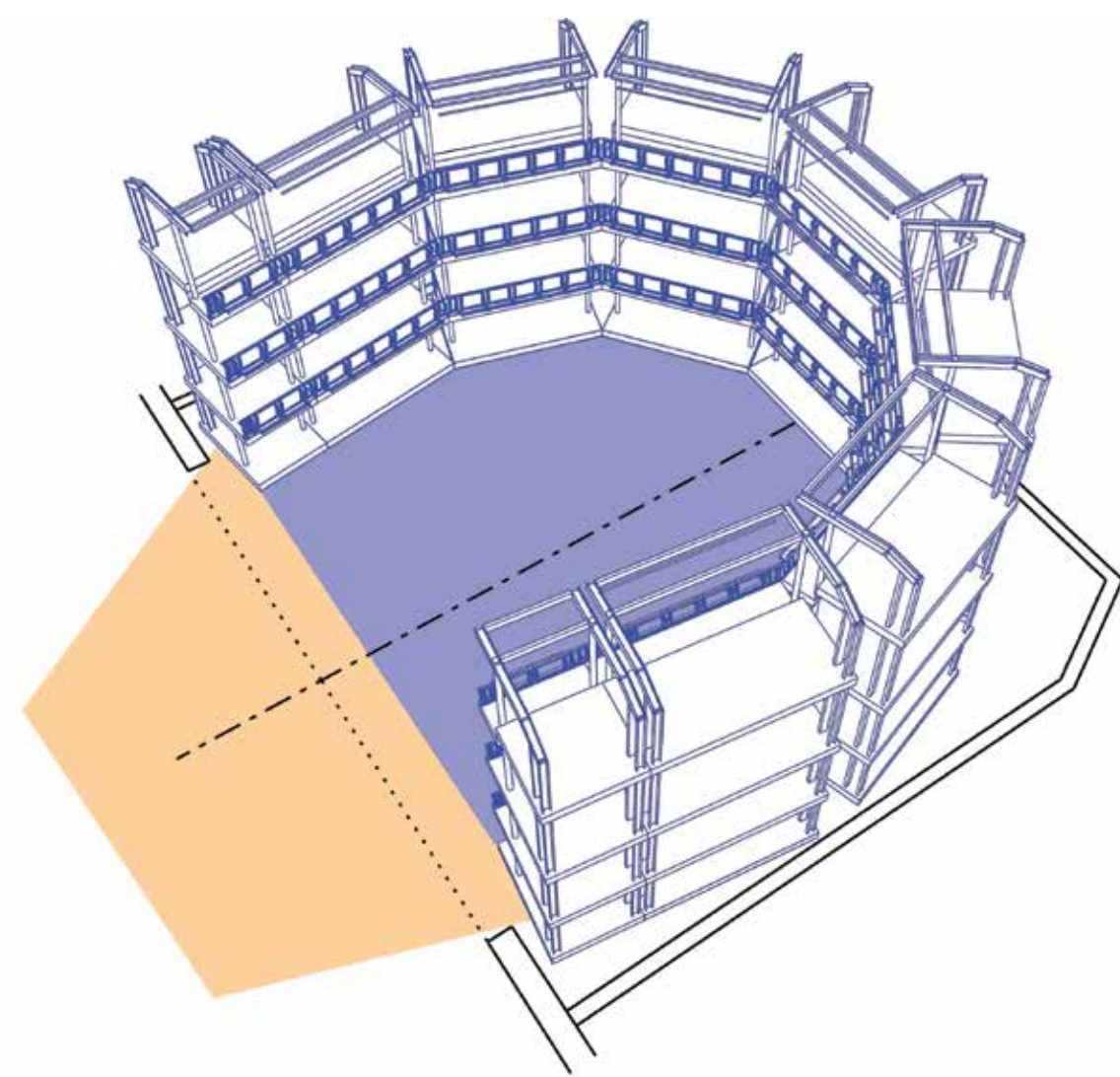


EXAMPLES OF TOWER CONFIGURATIONS

The year-round, flexible venue can be configured in a variety of shapes and sizes with audience capacities ranging from 150 to 850.



Stage Seating Area

Each mobile tower—the size of a city bus stood on its end—contains three levels of seating. These complex structures, pioneered for this design, house extensive theatrical technology, and connect into a network of HVAC components and sprinkler systems to accommodate audience comfort and safety.

THE YARD
AT CHICAGO SHAKESPEARE